

THE COLLECTION

Residences





THE COLLECTION

Residences

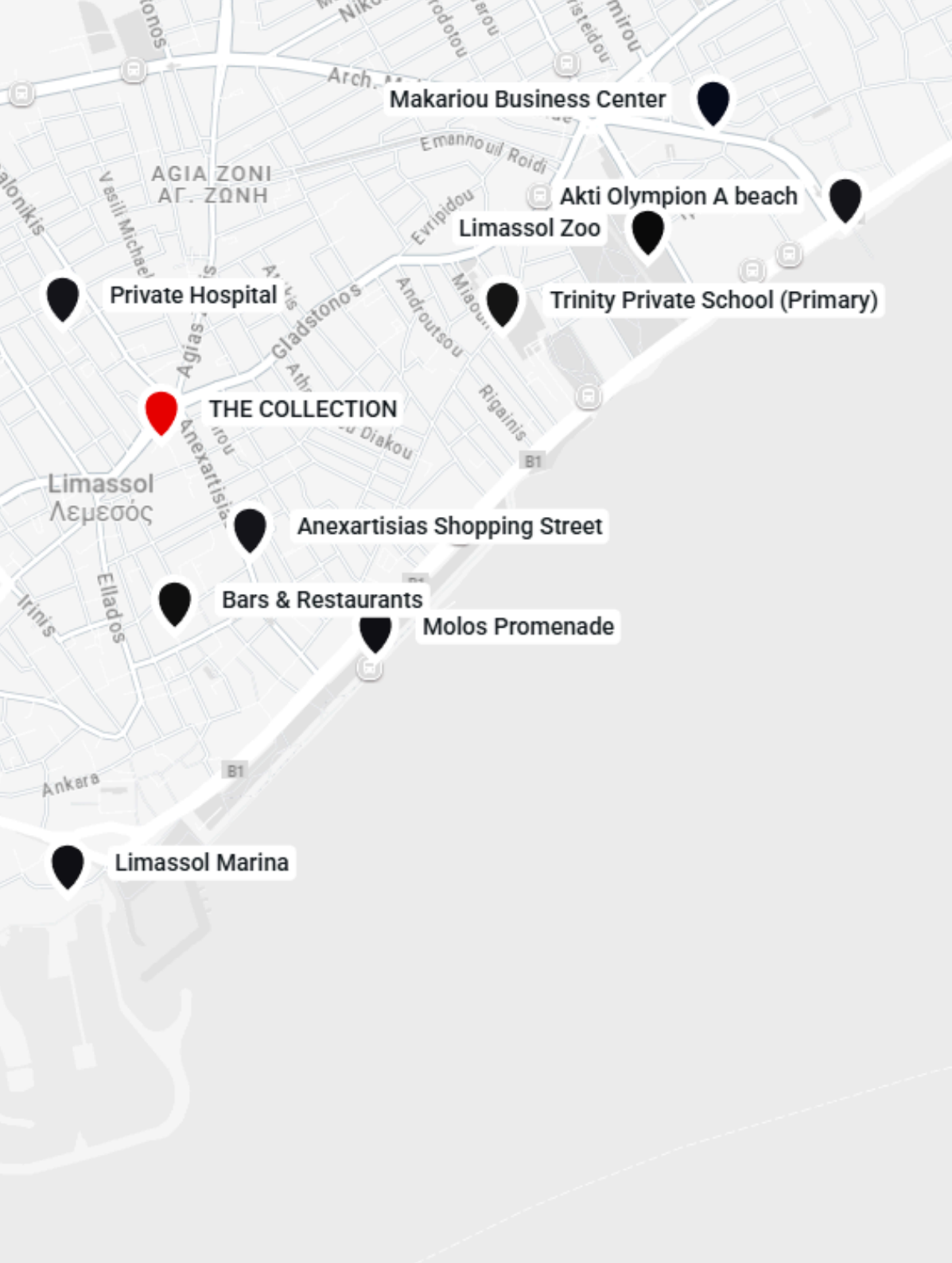
THE COLLECTION Residences – where contemporary design meets vibrant urban living.

A contemporary residential development in the heart of Limassol's historic city centre. "The Collection" features 72 modern studio, 1, and 2-bedroom apartments, thoughtfully designed to meet the evolving needs of a vibrant urban population.

Located on Gladstonos str. and just steps from Anexartisias str., the development offers seamless access to local amenities, including shops, restaurants, and Limassol's biggest University.

Each residence features a fresh, flexible living experience with bright interiors, modern aesthetics, and quality finishes. On-site amenities include a gym, open-air lounge, indoor lounge, rooftop swimming pool, barbecue area, and a bar with panoramic views of the Old Port and Limassol Marina.

An exciting opportunity in a dynamic and growing part of the city, offering high rental yield potential.



THE COLLECTION

Residences

Location:

Historical Centre – Gladstonos str.

- 1 min to Anexartisia str.
(Shopping, Commercial Street)
- 1 min Pattichio Theatre
- 15 min Beach front
- 15 min Limassol Marina
- 5 mins drive to Limassol
Municipal Garden
- 5 minute drive to Akti Olympion
Beach (Blue Flag Beach)

Map Location



RENT YOUR HOUSE WITH US AND MAXIMISE ITS POTENTIAL



HIGHER, STEADY YIELD

Increase your rental income by reducing your vacancy rate. Moving Doors is a long-term rated corporate tenant that will keep your apartment in excellent state.



VALUE APPRECIATION

Transform empty flats into revenue generating designer homes with Moving Doors, effectively elevating your property's value.



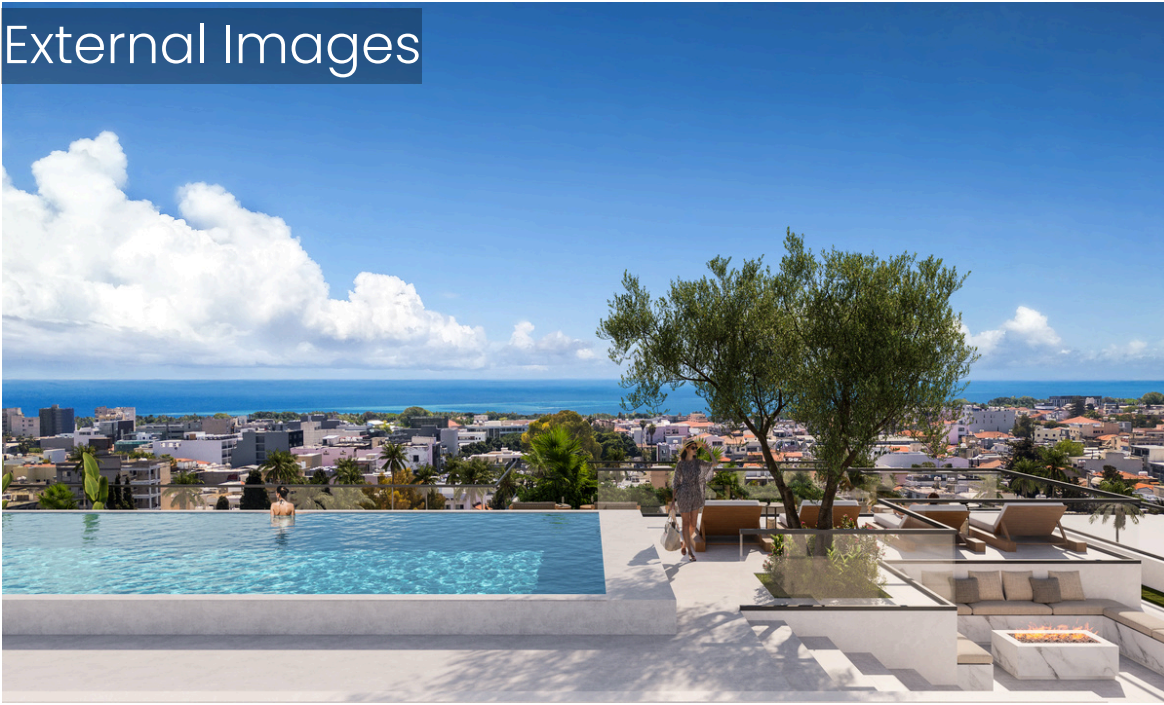
ZERO HASSLE

Forget midnight calls or any of the property pain. We take care of every aspect of the maintenance of the property.

Through a collaboration with **Moving Doors**; every apartment in NEVE Residences can be provided with a **3-year (minimum) Rental Guarantee**.

Moving Doors assumes the responsibility of fully equipping the Purchasers apartments with appliances and furniture increasing the value of the property while also providing the purchaser with a **steady and guaranteed yield without any management fees**.

External Images

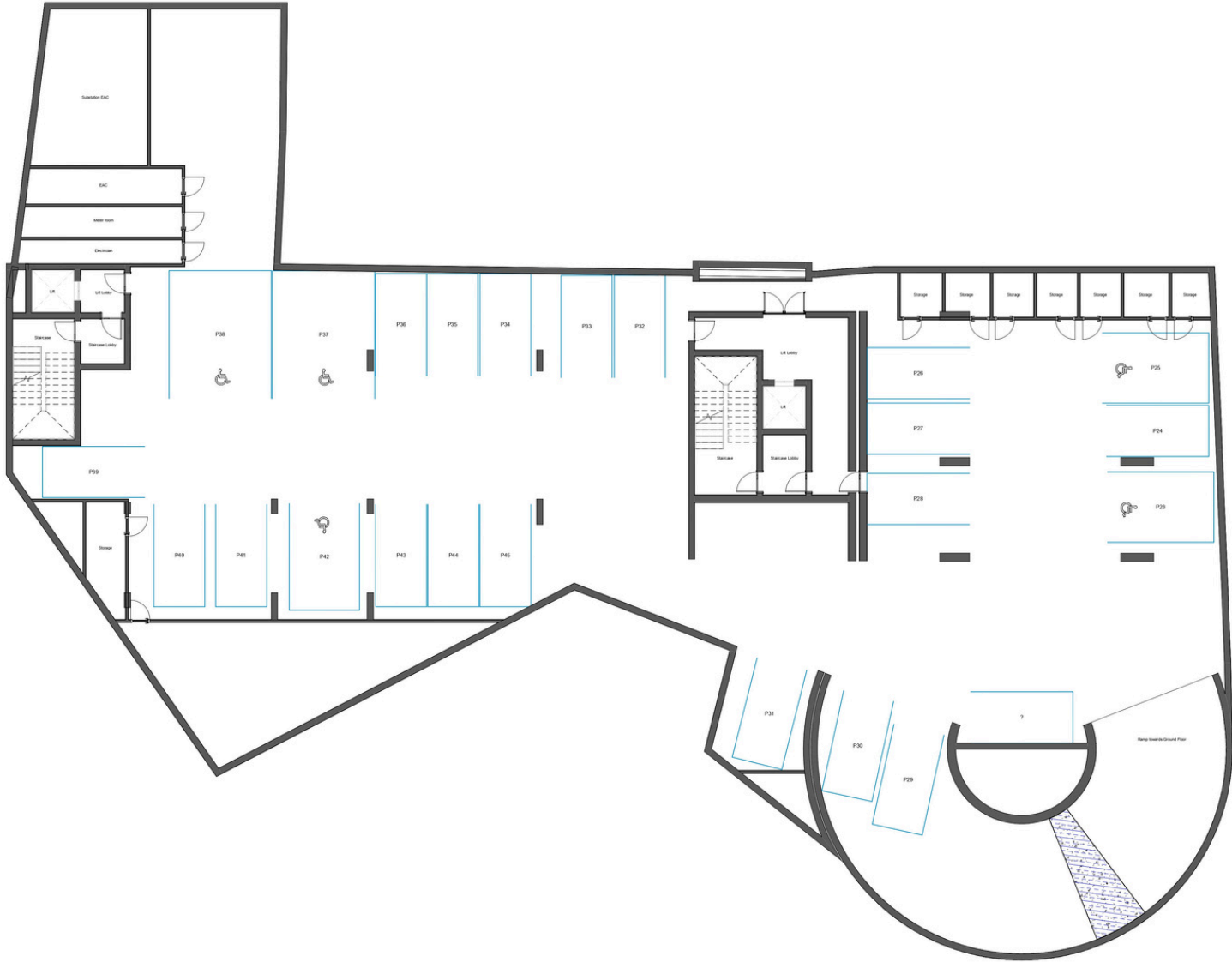


Interior Images



Plans

Basement floor:



Plans

Ground floor:



Plans

First floor:



Second floor:

Second floor:



Third floor:

Third floor:



Plans

Fourth Floor



Fifth Floor



Plans

Sixth Floor



Plans

Roof Garden

