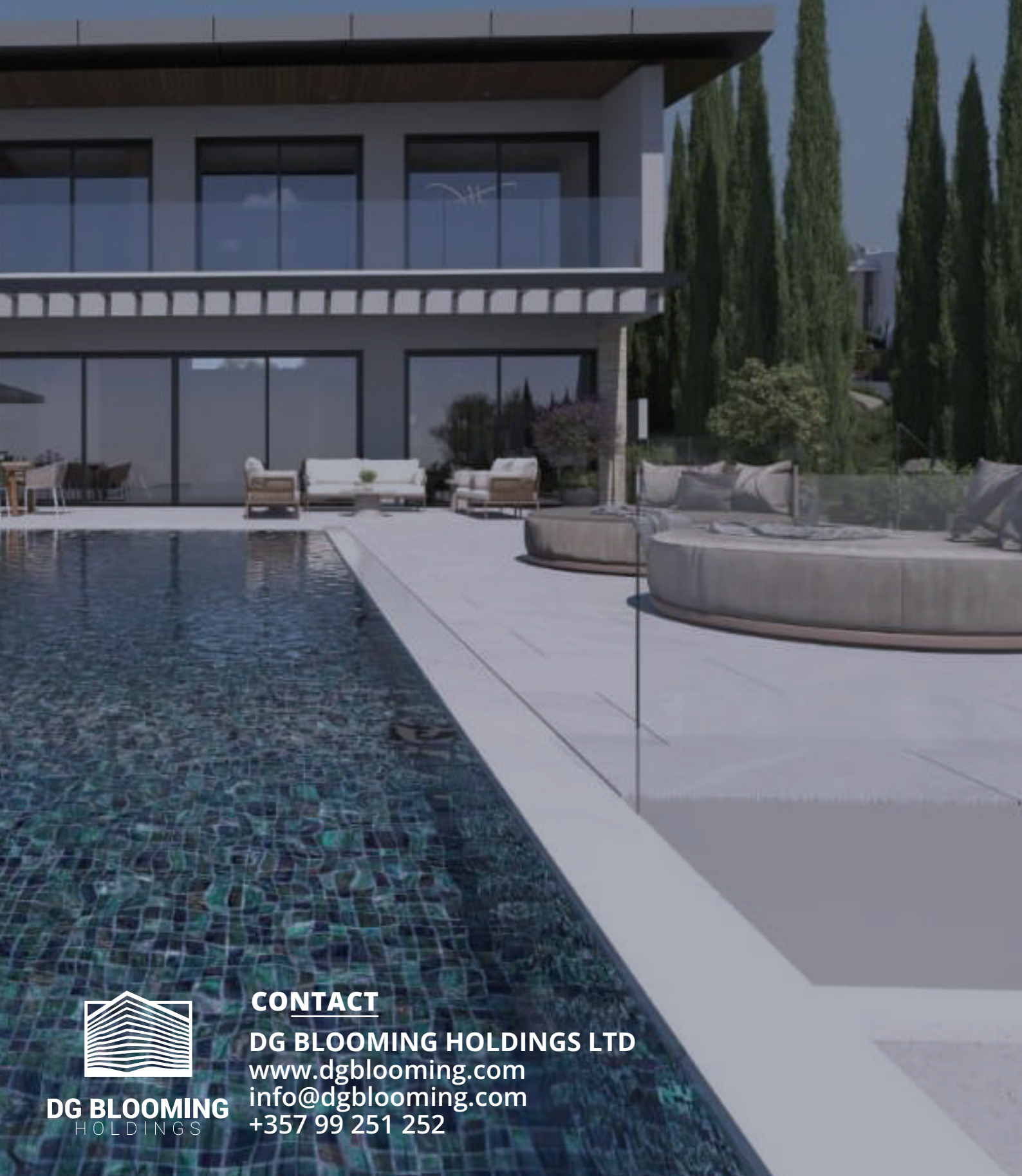


Nireus

by DG BLOOMING



DG BLOOMING
HOLDINGS

CONTACT

DG BLOOMING HOLDINGS LTD
www.dgblooming.com
info@dgblooming.com
+357 99 251 252



DG BLOOMING
HOLDINGS

Cyprus's property market is witnessing substantial growth, establishing itself as one of the fastest-growing within the European Union. Prices in certain areas are experiencing significant increases, while remaining relatively competitive compared to other European countries. The favorable tax environment adds to the appeal of investing in Cyprus, with attractive rates for capital gains, corporation tax, and income tax for foreign residents. Overall, Cyprus's low tax rates, strong infrastructure, and advantageous business environment make it an appealing choice for those seeking a desirable place to settle.

In addition to its financial advantages, Cyprus offers an exceptional living experience. The region enjoys a pleasant climate with a high number of sunny days, contributing to a comfortable lifestyle. Moreover, Cyprus is known for its safety, low crime rates, and welcoming atmosphere, making it an appealing destination for visitors.

Cyprus boasts exceptional medical facilities, educational institutions, and offshore business advantages, further enhancing its attractiveness, and provides a familiar and reliable environment for international investors. The projected growth of tourism ensures a ready market for property investors. The streamlined procedures of the land registry ensure a secure property purchase process.



Lorem ipsum dolor sit amet, consectetur adipiscing elit, sed diam nonummy nibh euismod tincidunt ut laoreet dolore magna aliquam erat volutpat. Ut wisi enim ad minim veniam, quis nostrud exercitation ullamcorper suscipit lobortis nisl ut aliquip ex ea commodo consequat. Duis autem vel eum iriure dolor in hendrerit in vulputate velit esse molestie consequat, vel illum dolore eu feugiat nulla facilisis at vero eros et accumsan et iusto odio dignissim qui blandit praesent luptatum zzril delenit augue duis dolore te feugait nulla facilisi.

Lorem ipsum dolor sit amet, consectetur adipiscing elit, sed diam nonummy nibh euismod tincidunt ut laoreet dolore magna aliquam erat volutpat. Ut wisi enim ad minim veniam, quis nostrud exercitation ullamcorper suscipit lobortis nisl ut aliquip ex ea commodo consequat.

Lorem ipsum dolor sit amet, consectetur adipiscing elit,

Nireus
by DG BLOOMING

Nireus





Items Included in Construction Price

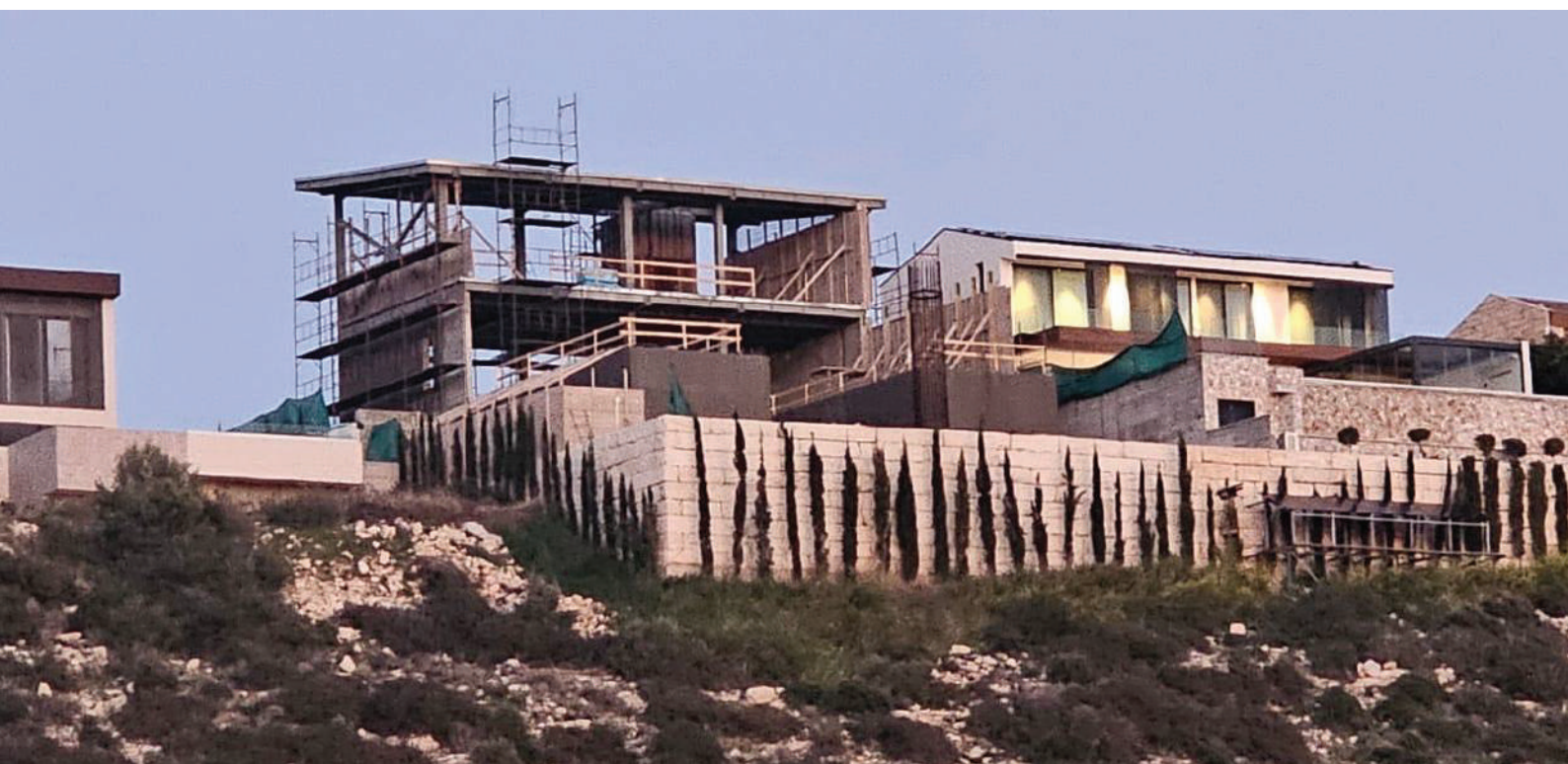
- MASTER BEDROOM EN-SUITE
- MASTER BEDROOM LARGE WALK-IN WARDROBE WITH ISLAND AND DRAWERS
- ADDITIONAL QUEST BEDROOMS EN-SUITE
- LIVING ROOM/DINING ROOM AND KITCHEN AREA OPEN-SPACE
- SAUNA ROOM AND GYM ROOM
- BAR IN BASEMENT AND CAVA
- CUSTOM MADE ITALIAN KITCHEN (allowance 50,000euro)
- CUSTOM MADE ITALIAN WARDROBES AND INTERNAL DOORS 3.0m HEIGHT (allowance 60,000euro)
- UNDERFLOOR HEATING USING TWO HEAT PUMPS, one for underfloor and one for hot water in all floors (Basement, Ground floor and First floor) -VRV LG A/C UNITS IN BEDROOMS, BATHROOMS AND LIVING ROOM/ DINING AREAS, SPECIAL ALL YEAR ROUND VENTILATION SYSTEM OF ALL ROOMS EVEN DURING CUSTOMER IS AWAY FROM HOUSE.
- REMOTE CONTROLLED ALUMINIUM PATIO DOORS WITH 10MM+10MM LOW E GLASS (ENERGY SAVING)
- ELECTRIC SHUTTERS IN BETWEEN THE DOUBLE GLAZING
- LIFT IN THE HOUSE FOR BASEMENT, GROUND FLOOR AND FIRST FLOOR
- CARLIFT WITH TURNTABLE FROM GROUND FLOOR LEVEL TO BASEMENT
- 25cm THERMAL BRICKS PERIMETRICALLY ON EXTERNAL WALLS
- VILLA WALLS AND ROOF DRESSED WITH 8cm POLYSTYRENE FOR EXTRA THERMAL PROTECTION

- ALL ROOMS AND ALL WALLS INTERNALLY WILL HAVE 2 COATS OF PLASTER, PLASTERBOARD WITH ROCK WOOL TO HIDE ELECTRICS AND PLUMBING. TICK AND THIN PASTE AND 3 COATS OF DULUX PAINT ON TOP OF THE PLASTERBOARD
- ALL WALLS EXTERNALLY WILL HAVE COMBINATION OF TWO COATS OF PLASTER, 8CM THICK POLYSTYRENE WITH GLUE AND NET OF 160gr/m² AND STONE CLADDING.
- GRANITE OR CORIAN IN KITCHEN WORKTOP, ISLAND AND BACKSPLASH
- SECURITY PIVOT ENTRANCE DOOR 2.5m wide x 3.0m height
- GATE CAMERA FOR AUTOMATIC OPENING WALK-IN GATE
- CCTV ON ALL PROPERTY AND ALARM FOR VILLA WITH LASER BEAM ON PERIMETER WALLS HAVING ALLOWANCE OF 40,000euros
- SPECIAL ONYX WITH LIGHT SURROUNDING FIREPLACE IN LIVING ROOM
- SPECIAL ONYX IN QUEST TOILETS AND MASTER BATHROOM
- 5m wide x 17m long EXTERNAL POOL WITH 3 GLASS WINDOWS FACING THE SEA, 3m wide FLOOR WINDOW FACING BASEMENT and 3m wide wall window FACING BAR IN BASEMENT
- 5m x 10m INTERNAL HEATED POOL IN BASEMENT UNDER EXTERNAL POOL
- BARBEQUE AREA AND KITCHENETTE BY THE POOL AREA
- 300m² COVERED PARKING
- UTILITY/STORAGE ROOM NEXT TO PARKING
- SOLAR PANELS ON ROOF FOR ELECTRICITY FOR 10KW

Time For Construction

The time required to complete the project is ten (10) months from contract signing.

For the timely and punctual completion of the project, the completion of the studies, the inspection of the works, a professional team of Engineers and Architects will be involved which have experience of this magnitude and quality project. It must be mentioned also that there will be meetings for the planning of all special, Long Lead items, so they are ordered on time and warrantee the completion of the project on time and as per the Critical Path Method and Bar Chart which will be prepared.











Nireus









DG BLOOMING
HOLDINGS

CONTACT

DG BLOOMING HOLDINGS LTD
www.dgblooming.com
info@dgblooming.com
+357 99 251 252