



SOL
PROPERTIES

NEW PROJECT

LIMASSOL

*portal

PROJECT INTRODUCTION



Portal is a residential apartment project in Agios Ioannis, the most actively developing business area of Limassol. This project primarily consists of studios and one-bedroom apartments. It is ideal for those seeking more, as it is in close proximity to the city's major business centers, where the largest companies aim to establish themselves, making it a great investment opportunity. In addition to thoughtfully designed modern apartment layouts, the complex offers everything you need for relaxation and recovery after a productive workday: a swimming pool, gym, sauna, roof garden, and common spaces for work and leisure.

solidifying your dreams



PORTAL: AGIOS IOANNIS



PORTAL: AGIOS IOANNIS







*Portal

Location: Agios Ioannis

Type: Residential apartments

Facilities: roof swimming pool, relax zone, bbq area

Status: Planning Permission

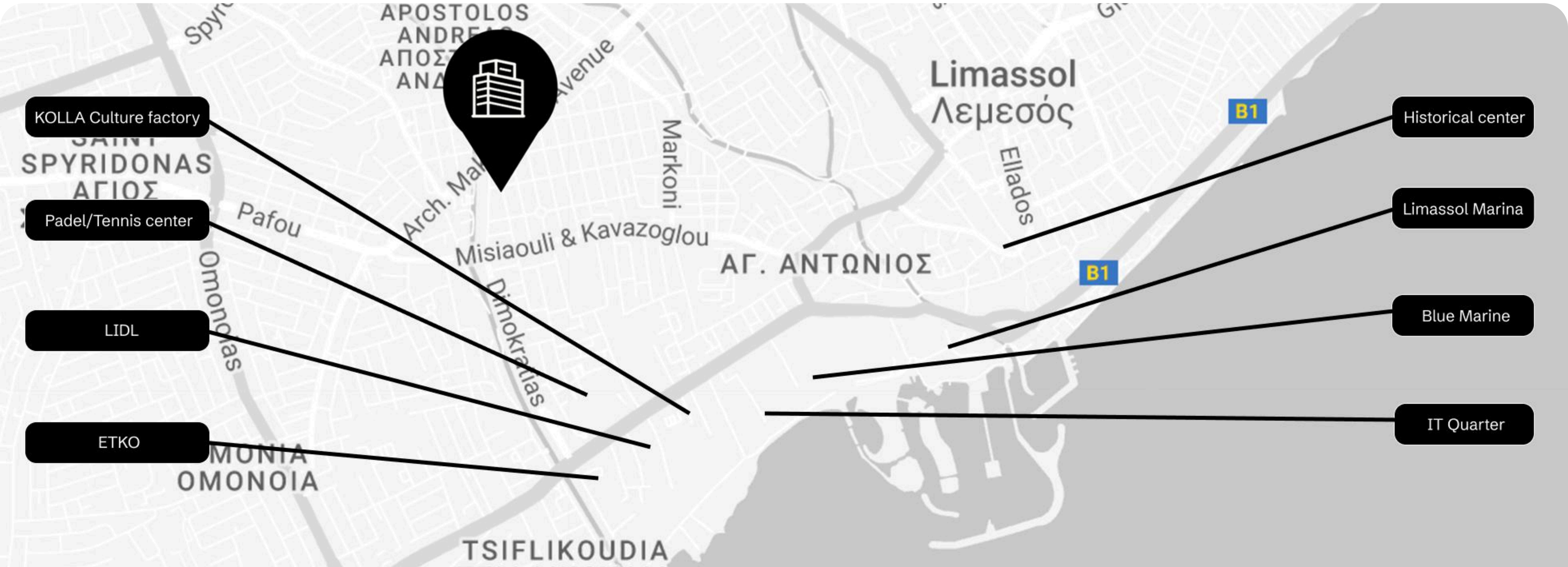
Delivery: December 2026



PORTAL: AGIOS IOANNIS

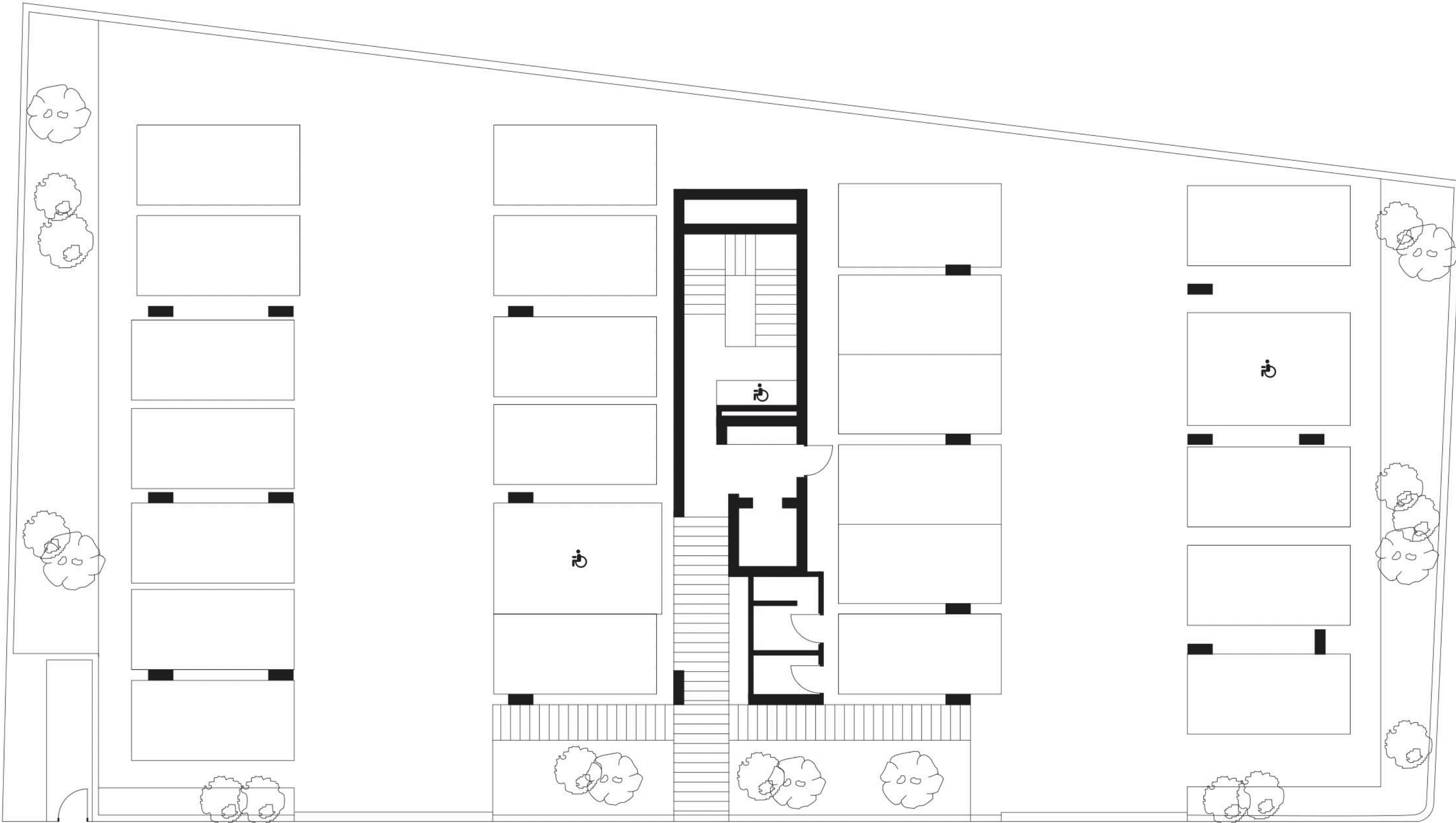


LOCATION



*location

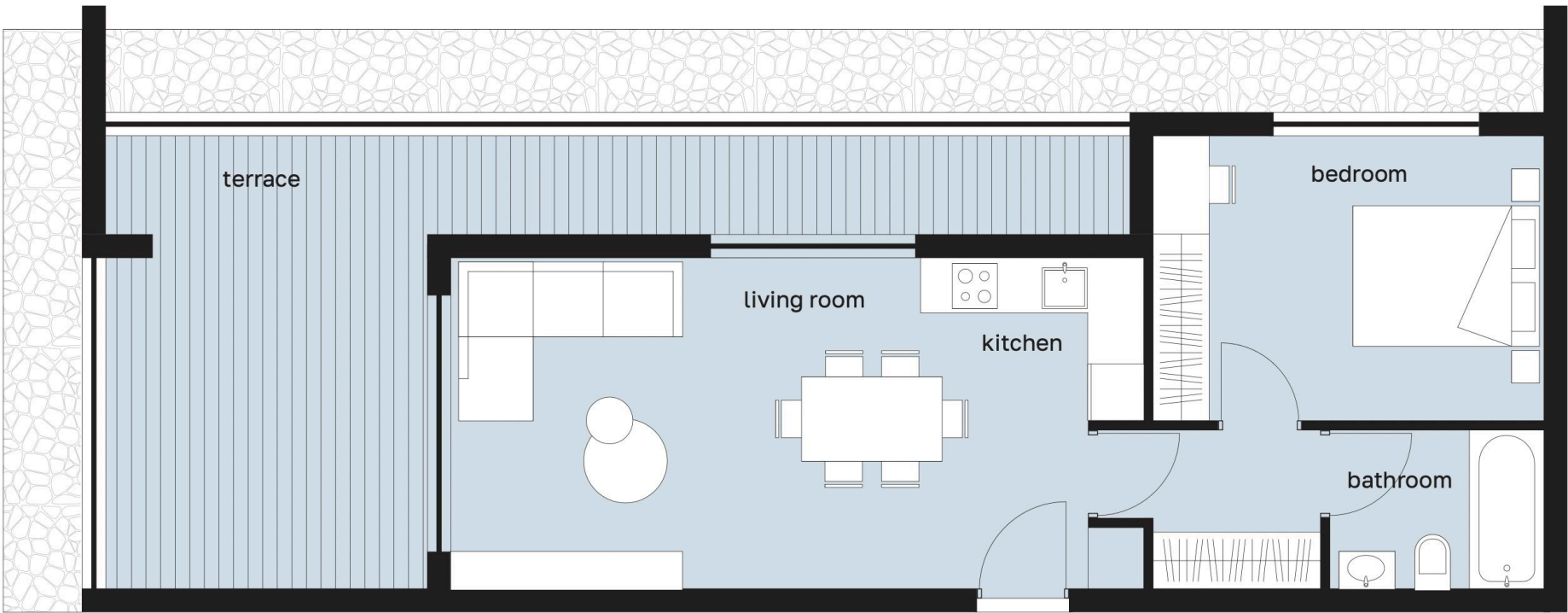
PARKING



PLANS: FLOOR 1&2

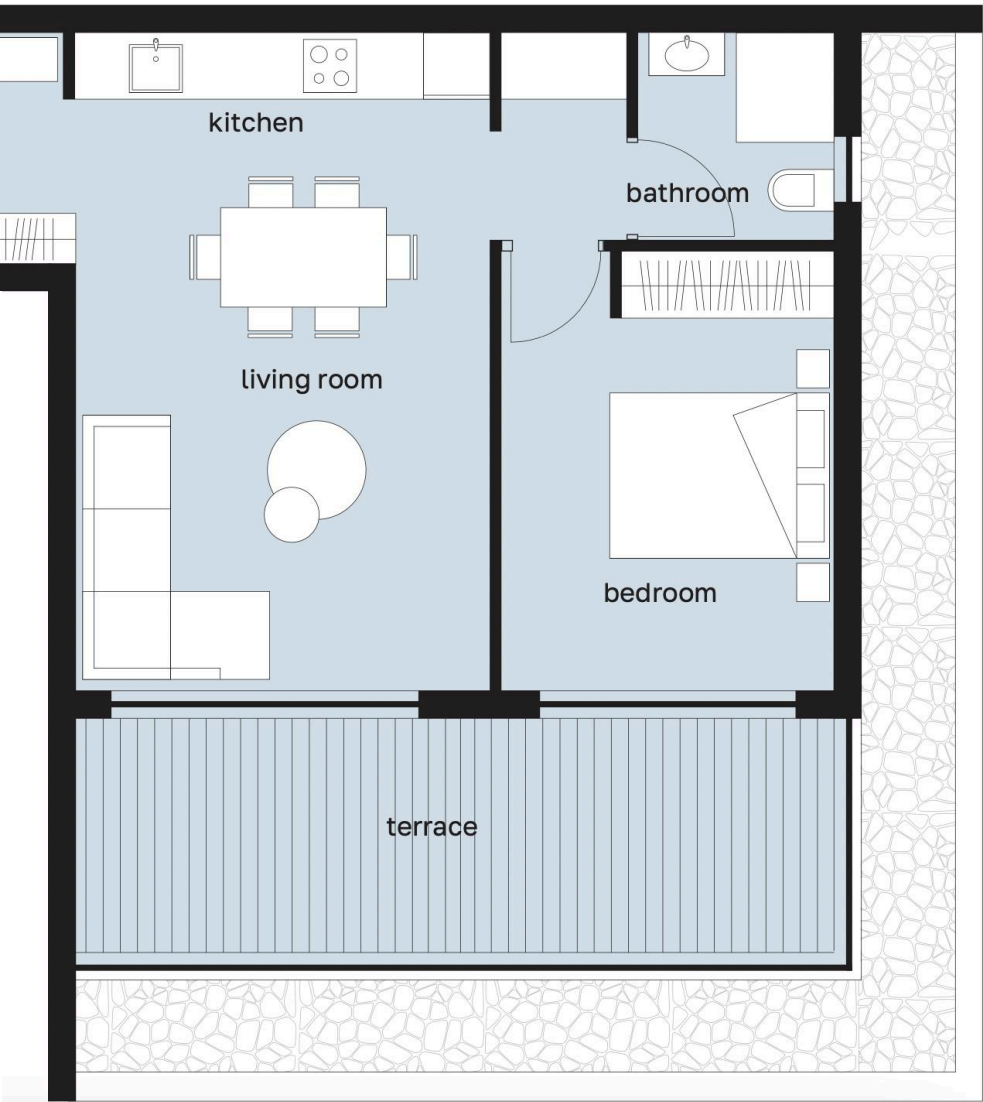
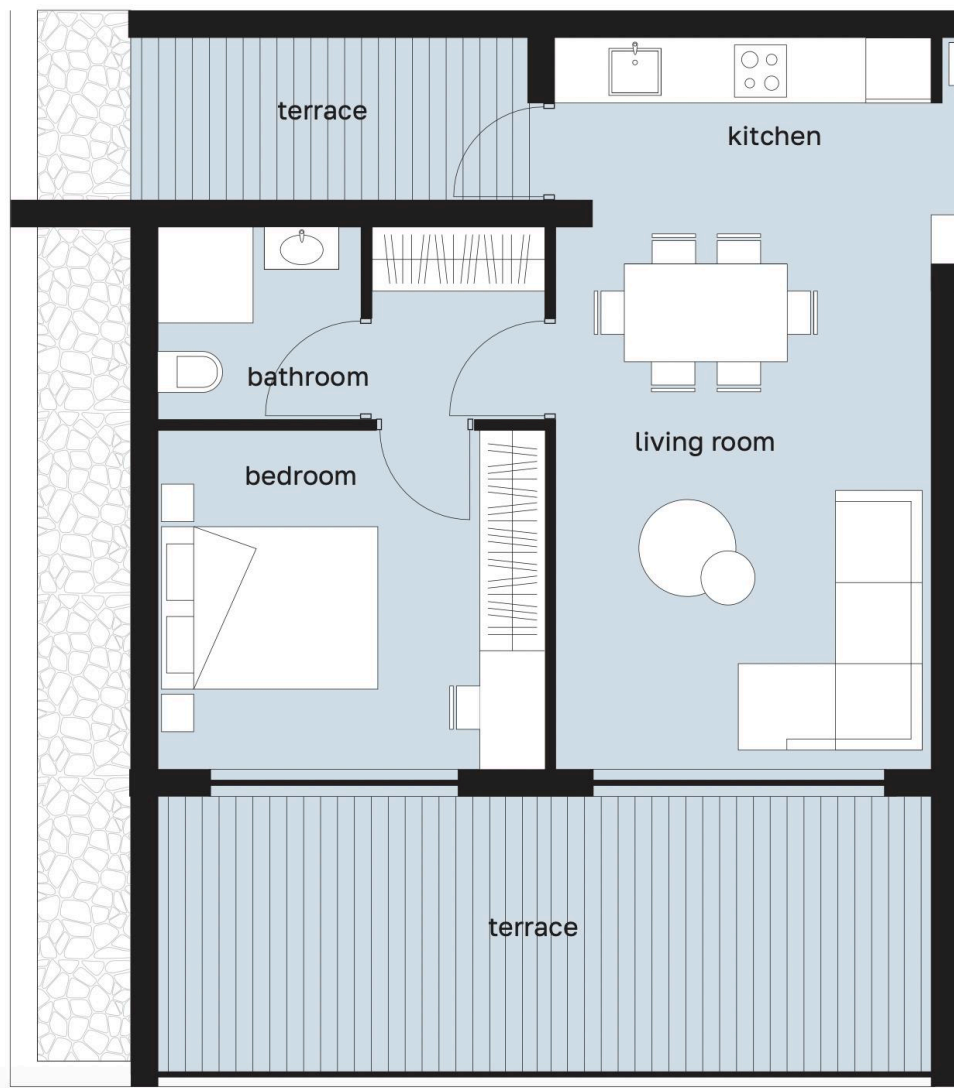
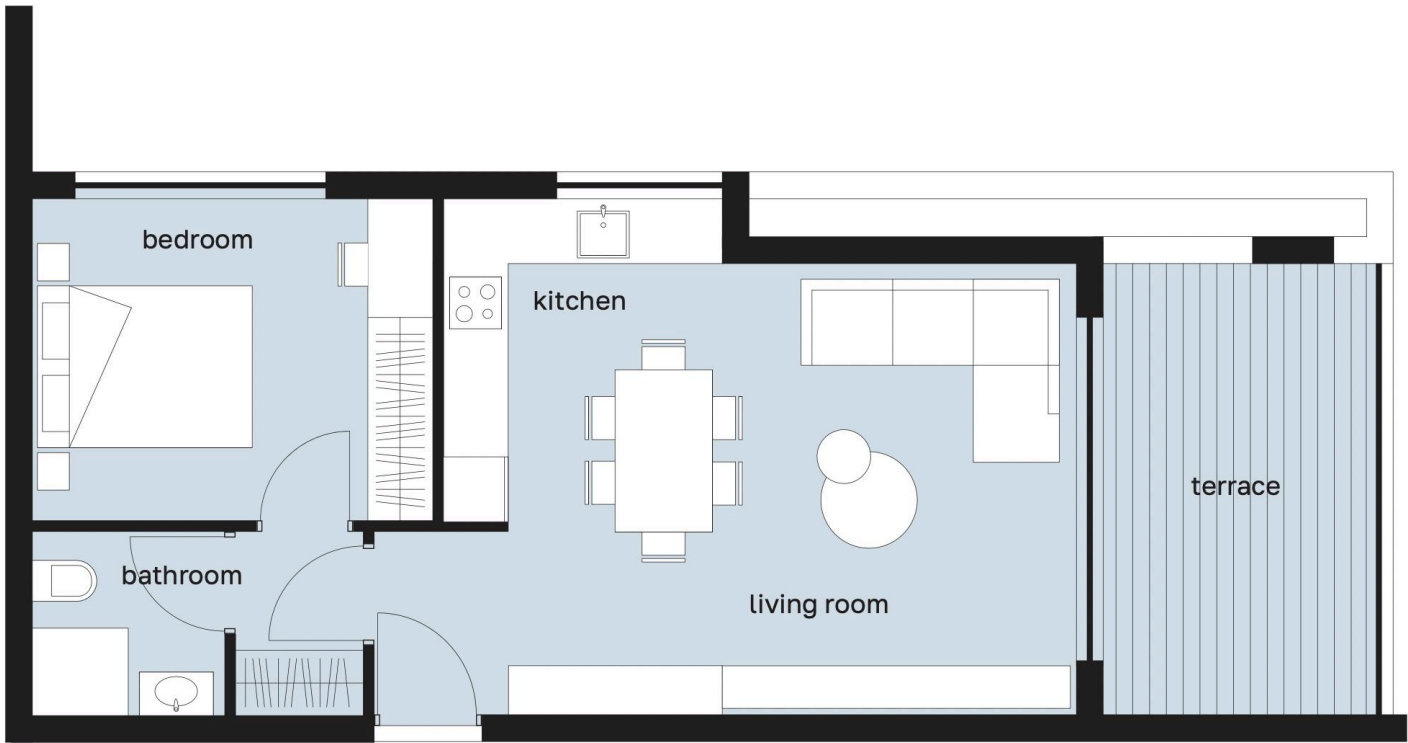
Flats 106/206

Kitchen/Living	33.77m²
Bedroom	12.81m²
Bathroom/Laundry	6.97m²
Covered veranda	28.81m²



Flats 102/202

Kitchen/Living	33.19m²
Bedroom	12.81m²
Bathroom/Laundry	5.6m²
Covered veranda	15.48m²



Flats 104/204

Kitchen/Living	34.86m²
Bedroom	11.34m²
Bathroom/Laundry	6.3m²
Covered veranda	19.44m²

Flats 104/204

Kitchen/Living	33.4m²
Bedroom	12.025m²
Bathroom/Laundry	6.1m²
Covered veranda	17m²

Flats 103/203

Kitchen/Living	33.4m²
Bedroom	12.025m²
Bathroom/Laundry	6.15m²
Covered veranda	17m²

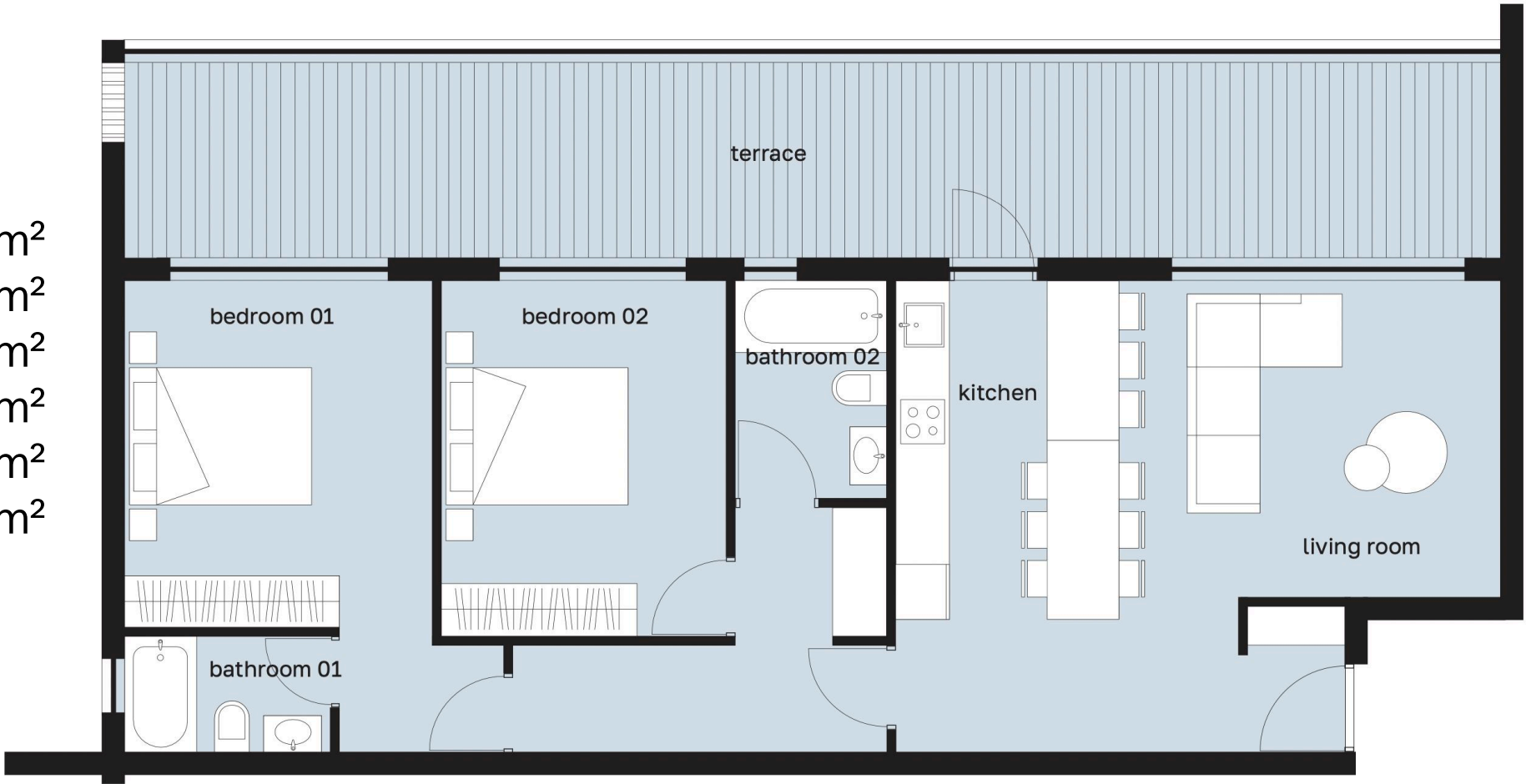
Flats 102/202

Kitchen/Living	33.19m²
Bedroom	12.81m²
Bathroom/Laundry	5.6m²
Covered veranda	15.48m²

PLANS: FLOOR 3&4

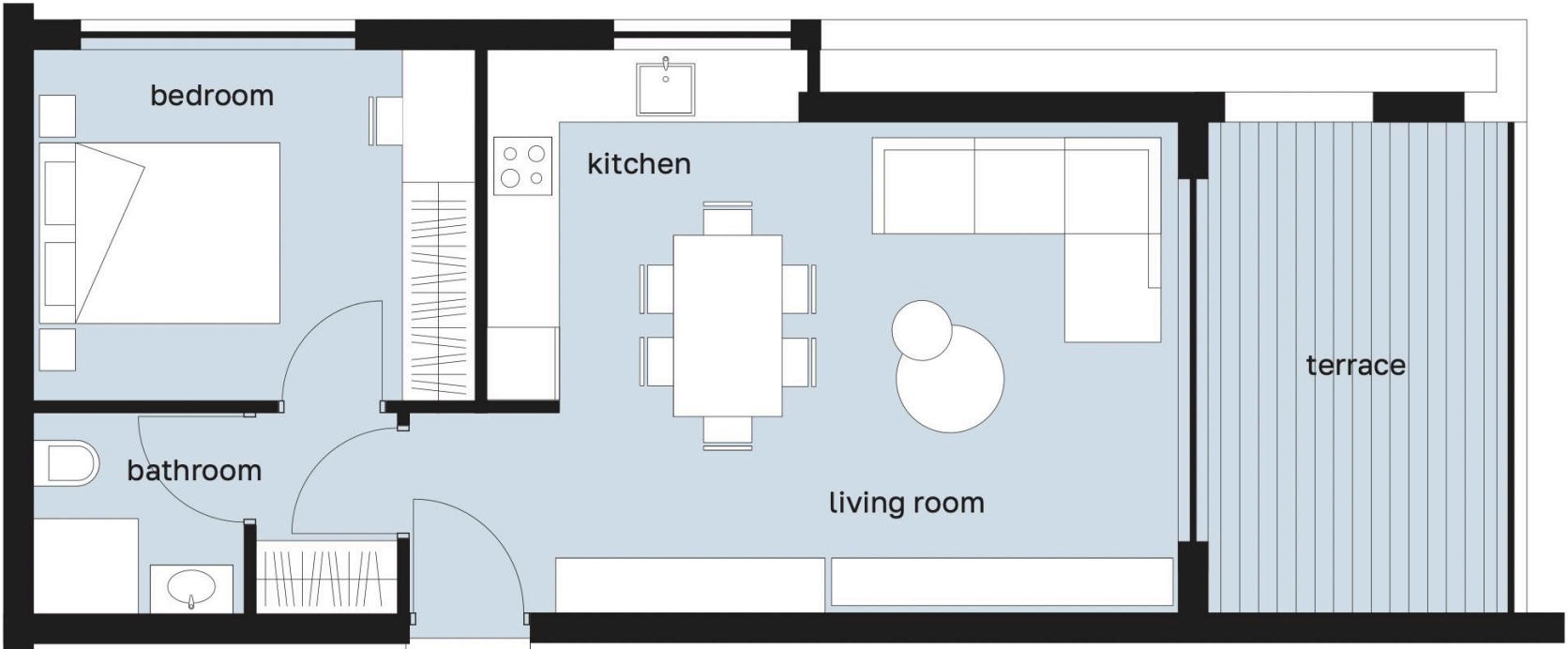
Flats 304/404

Kitchen/Living	49.21m²
Master bedroom	14.95m²
En-suite	3m²
Bedroom	12.8m²
Bathroom/Laundry	6.8m²
Veranda	33.55(19.36)m²



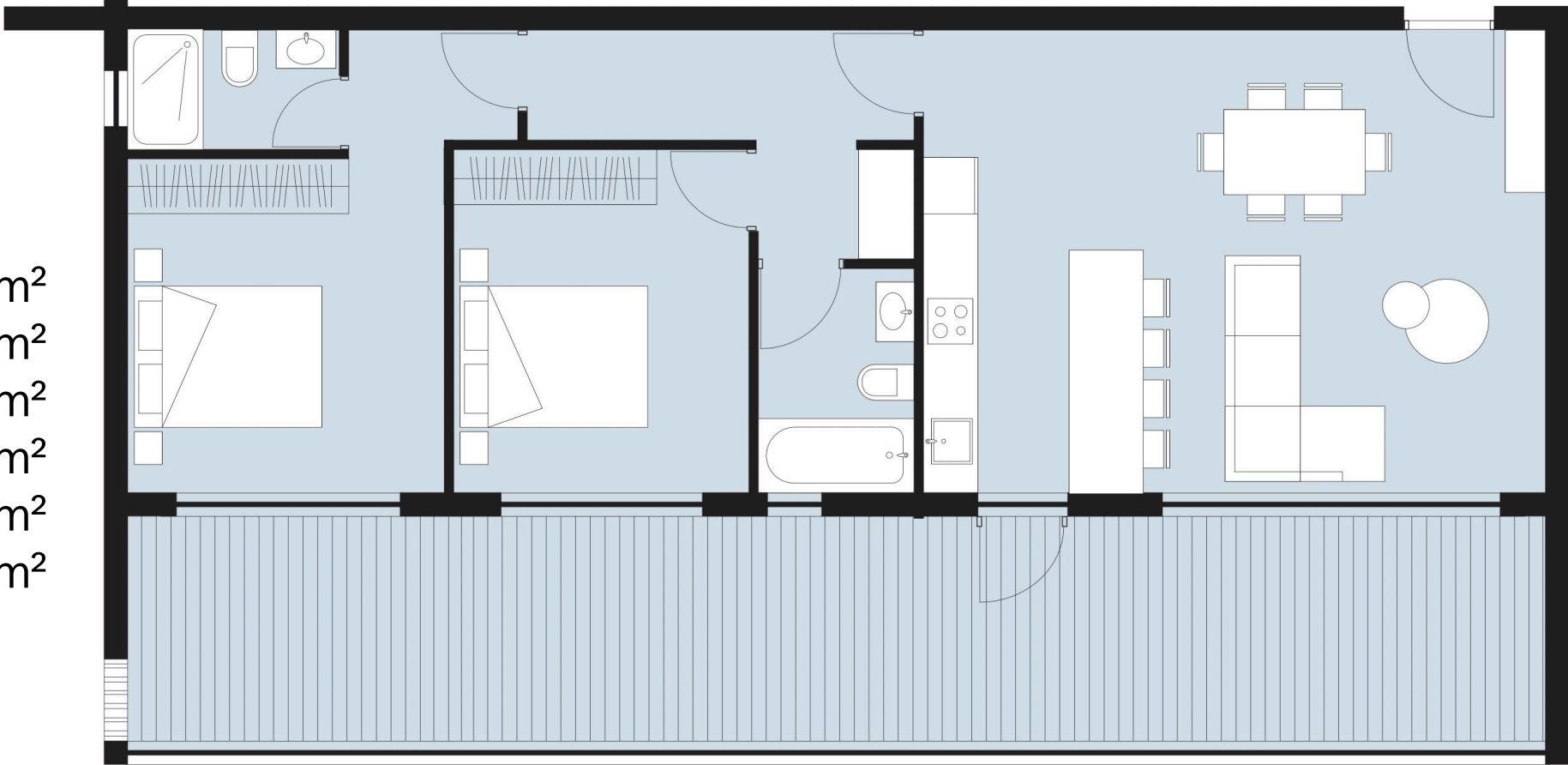
Flats 301/401

Kitchen/Living	34.05m²
Bedroom	11.25m²
Bathroom/Laundry	5.1m²
Veranda	11.34m²



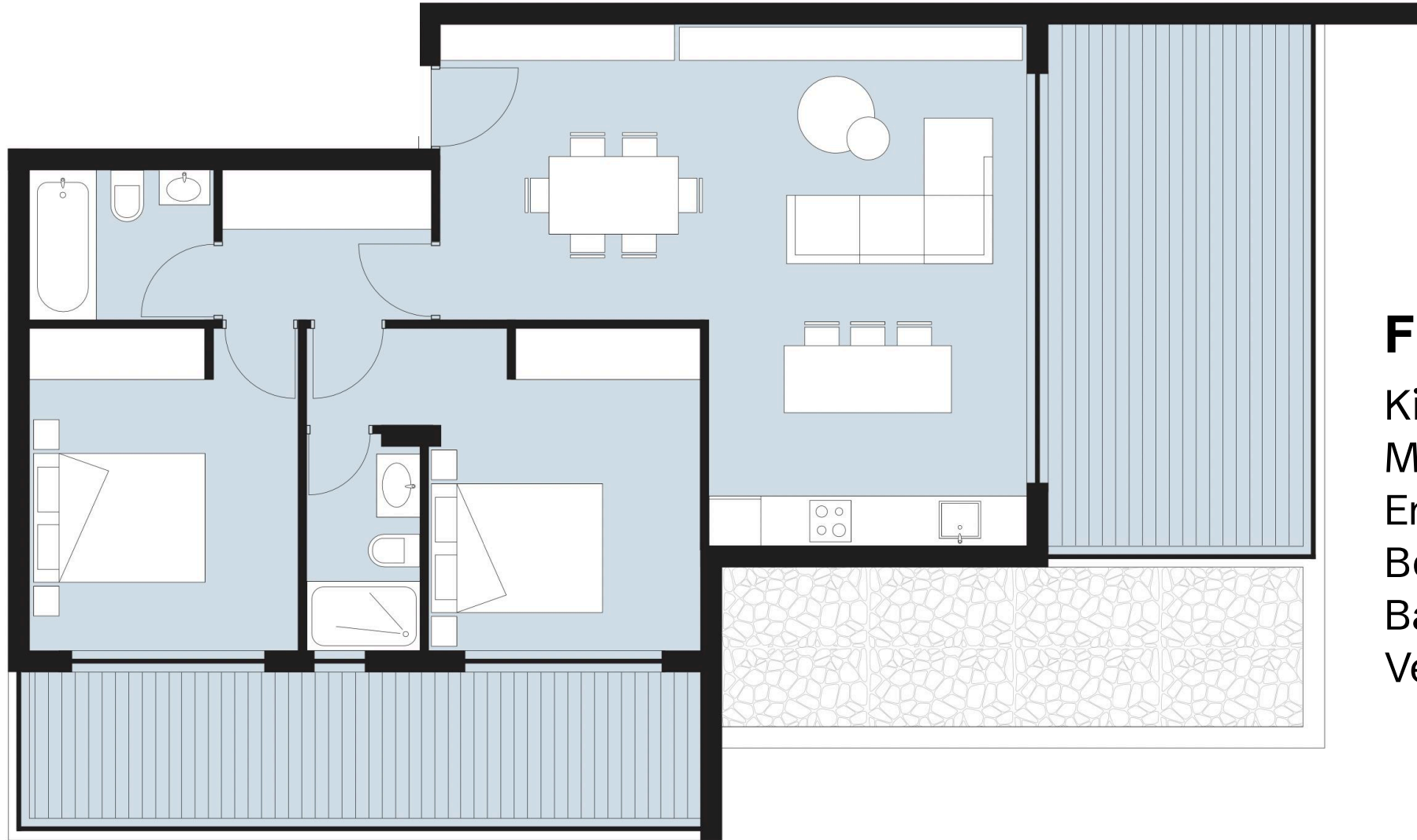
Flats 303/403

Kitchen/Living	52.5m²
Master bedroom	12.6m²
En-suite	3m²
Bedroom	12m²
Bathroom/Laundry	6.38m²
Veranda	41.7(16.74)m²



Flats 302/402

Kitchen/Living	45.5m²
Master bedroom	14.14m²
En-suite	3.51m²
Bedroom	12.32m²
Bathroom/Laundry	8.46m²
Veranda	22.28m²



solidifying
your dreams

↙
SOL