

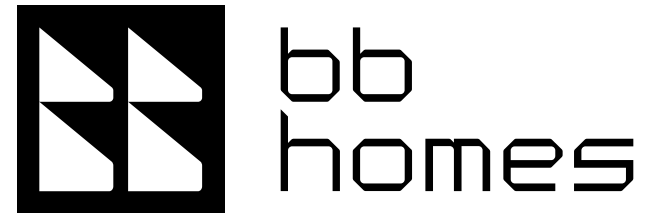


# havn residences

9



building balance



# havn

noun [haw²n] Danish

"harbor" or "haven" — a safe and welcoming place, much like a home.



# havn residences

**HAVN Residences** is a modern residential building that stands out for its clean architectural lines and refined simplicity. Designed with purpose and precision, it presents distinct exterior design and functional interior layouts that are both stylish and comfortable.

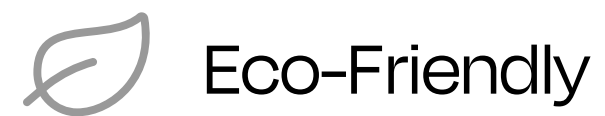
With only eight exclusive apartments: four 1-bedroom, two 2-bedroom, and two 3-bedroom, HAVN Residences provides an intimate residential setting. At the same time, its ideal location just 500 meters from Limassol Mall and City of Dreams Mediterranean Casino Resort offers immediate access to lifestyle, leisure, and convenience.

Built with sustainability in mind, HAVN Residences follows bioclimatic design principles and proudly achieves Class A Energy Performance. The apartments are designed to be bright and airy, welcoming natural light and fresh air to enhance everyday comfort.

HAVN Residences is more than a residence. It is a place where modern living meets comfort and simplicity, finding its perfect balance.



We take pride in  
Building Balanced Homes  
that optimise space,  
are energy efficient,  
aesthetically pleasing  
and comfortable  
to live in.



# We build eco-friendly homes with high energy efficiency

Built with sustainability in mind, **HAVN Residences** follows bioclimatic design principles and proudly achieves **Class A Energy Performance**. The apartments are designed to be bright and airy, welcoming natural light and fresh air to enhance everyday comfort.










ENERGY CLASS	A
ENERGY PERFORMANCE OF THE BUILDING	49kwh/m <sup>2</sup> /yr
CARBON DIOXIDE EMISSIONS	14.38kgCO <sub>2</sub> /m <sup>2</sup> /yr



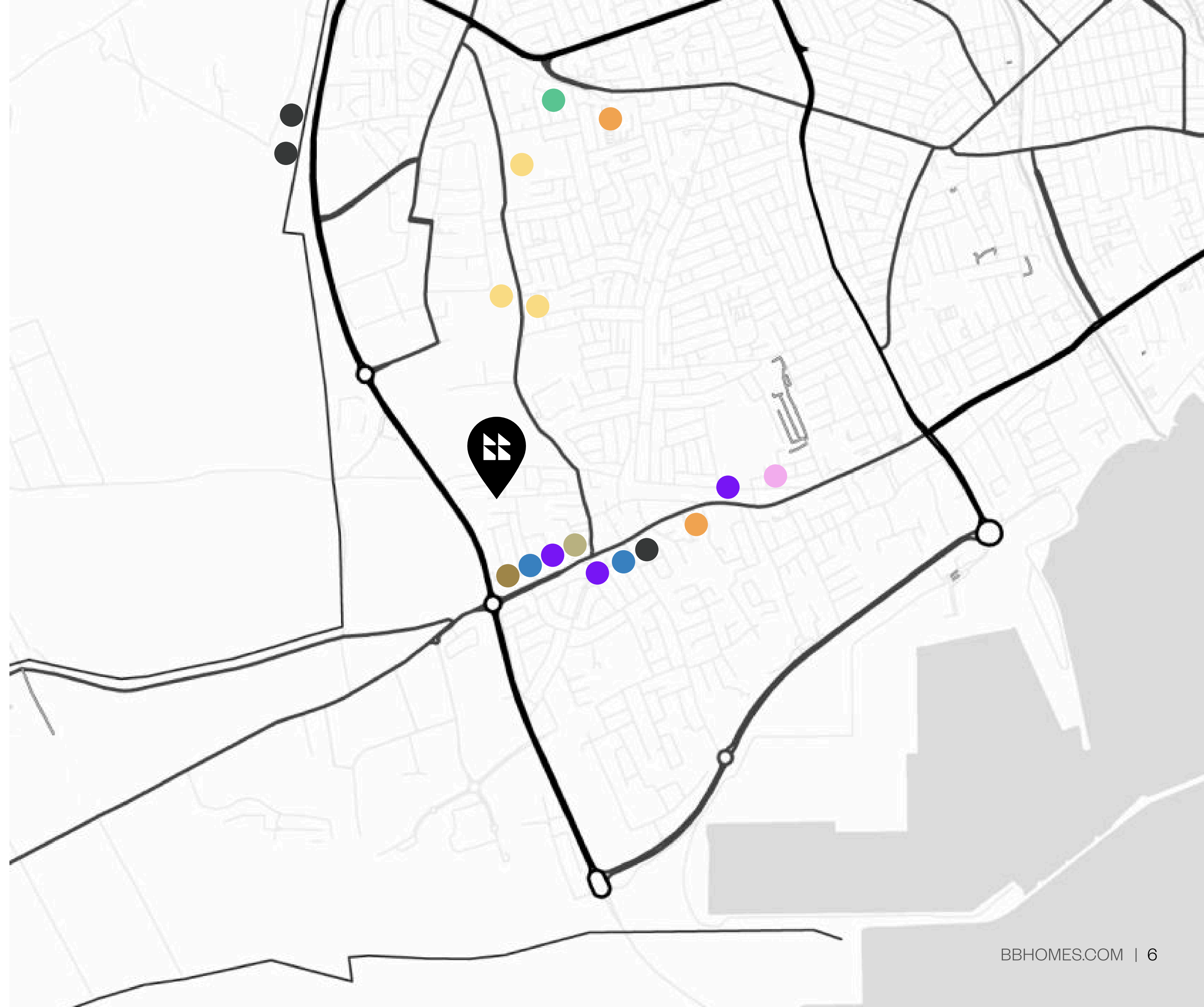
# havn residences location

HAVN Residences is ideally located just 500 meters from Limassol Mall and City of Dreams Mediterranean Casino Resort, offering immediate access to lifestyle, leisure, and convenience.

With easy access to the highway and main road arteries, residents enjoy excellent connectivity across the city. At the same time, everyday essentials are right at your doorstep, making daily living simple and easy.

-  Supermarket
-  School
-  Bakery
-  Bank
-  Coffee Shop
-  Gym
-  Pharmacy
-  Convenience Store
-  Gas Station

My Mall Limassol 1 MINUTE DRIVE    Limassol Casino 2 MINUTES DRIVE    Limassol Marina 5 MINUTES DRIVE

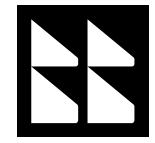


LIMASSOL CASINO

LIMASSOL GOLF

LIMASSOL MALL





# havn residences floor plans & interior

HAVN Residences consists of only eight exclusive apartments - four 1-bedroom, two 2-bedroom, and two 3-bedroom - providing an intimate residential setting.

Every aspect of the interiors has been carefully planned to optimise space, welcoming natural light and fresh air into every corner. This considered design creates a home that is both functional and elegant, offering residents a sense of ease and comfort.

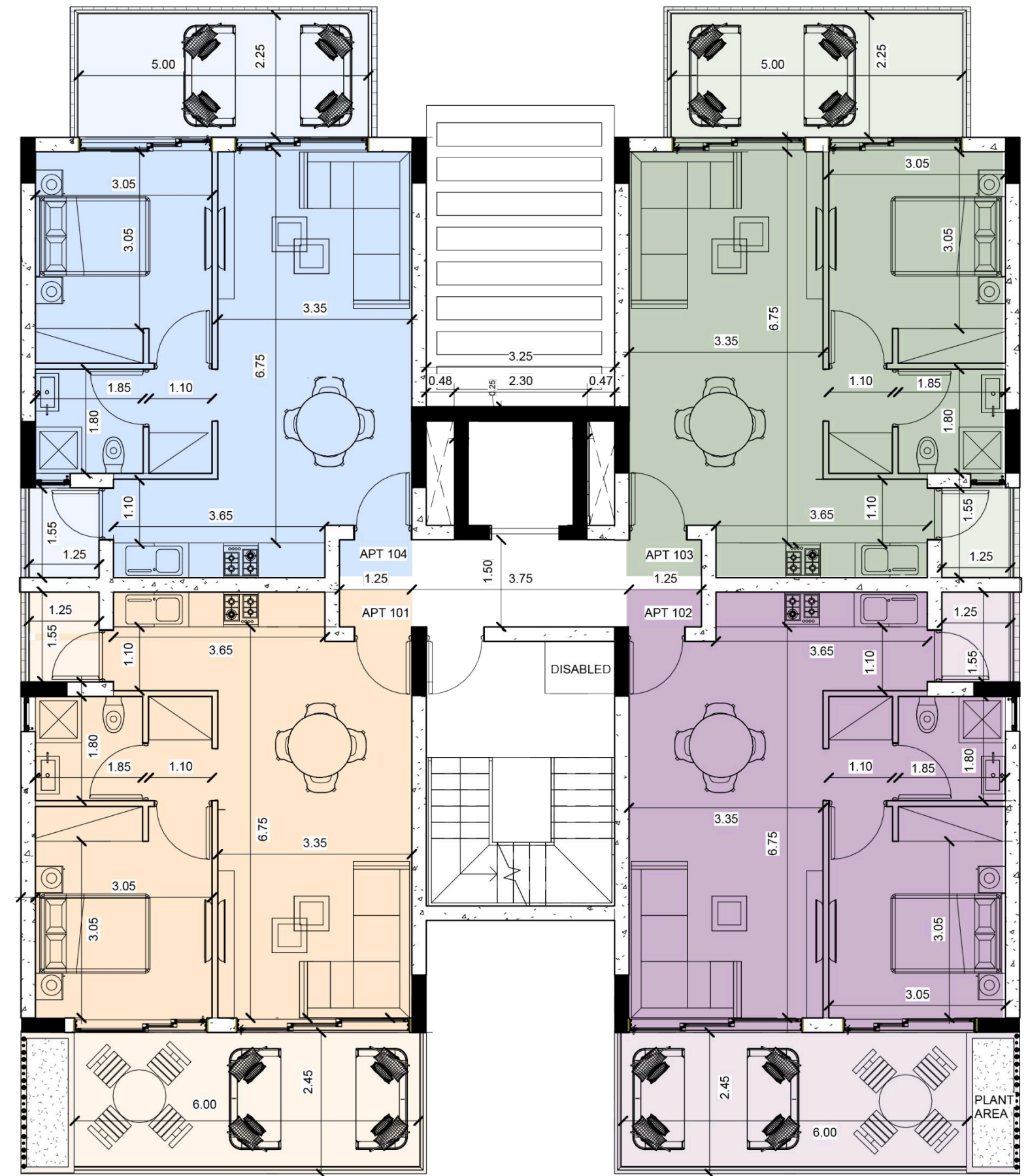
- ▲ Premium Sanitary Ware
- ▲ A/C Provisions
- ▲ Solar Water Heating System
- ▲ Fiber-Optic Internet Line
- ▲ Security Entrance Door
- ▲ Covered Parking
- ▲ Storage Room
- ▲ Technogranite Countertop & Backsplash
- ▲ Electric Heating Provisions
- ▲ Pressurised Water System
- ▲ Video Intercom System
- ▲ Thermally Insulated Aluminium Frames
- ▲ EV Charging Provision
- ▲ Laundry Spot





## havn residences first floor plans

- ▲ Premium Sanitary Ware
- ▲ Technogranite Countertop & Backsplash
- ▲ A/C Provisions
- ▲ Electric Heating Provisions
- ▲ Solar Water Heating System
- ▲ Pressurised Water System
- ▲ Fiber-Optic Internet Line
- ▲ Video Intercom System
- ▲ Security Entrance Door
- ▲ Thermally Insulated Aluminium Frames
- ▲ Covered Parking
- ▲ EV Charging Provision
- ▲ Storage Room
- ▲ Laundry Spot



	FLOOR	BEDROOMS	BATHROOMS	COVERED PARKING	INTERNAL AREAS (M <sup>2</sup> )	COVERED VERANDAS (M <sup>2</sup> )	UNCOVERED VERANDAS (M <sup>2</sup> )	ROOF GARDEN (M <sup>2</sup> )	STORAGE ROOM (M <sup>2</sup> )	COMMON AREAS(M <sup>2</sup> )	TOTAL AREAS (M <sup>2</sup> )
<b>FLAT 101</b>	1st	1	1	1	50	17	-	-	3	4	74
<b>FLAT 102</b>	1st	1	1	1	50	17	-	-	3	4	74
<b>FLAT 103</b>	1st	1	1	1	50	14	-	-	3	4	71
<b>FLAT 104</b>	1st	1	1	1	50	14	-	-	3	4	71

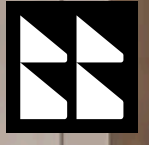
# havn residences 1 bedroom apartments











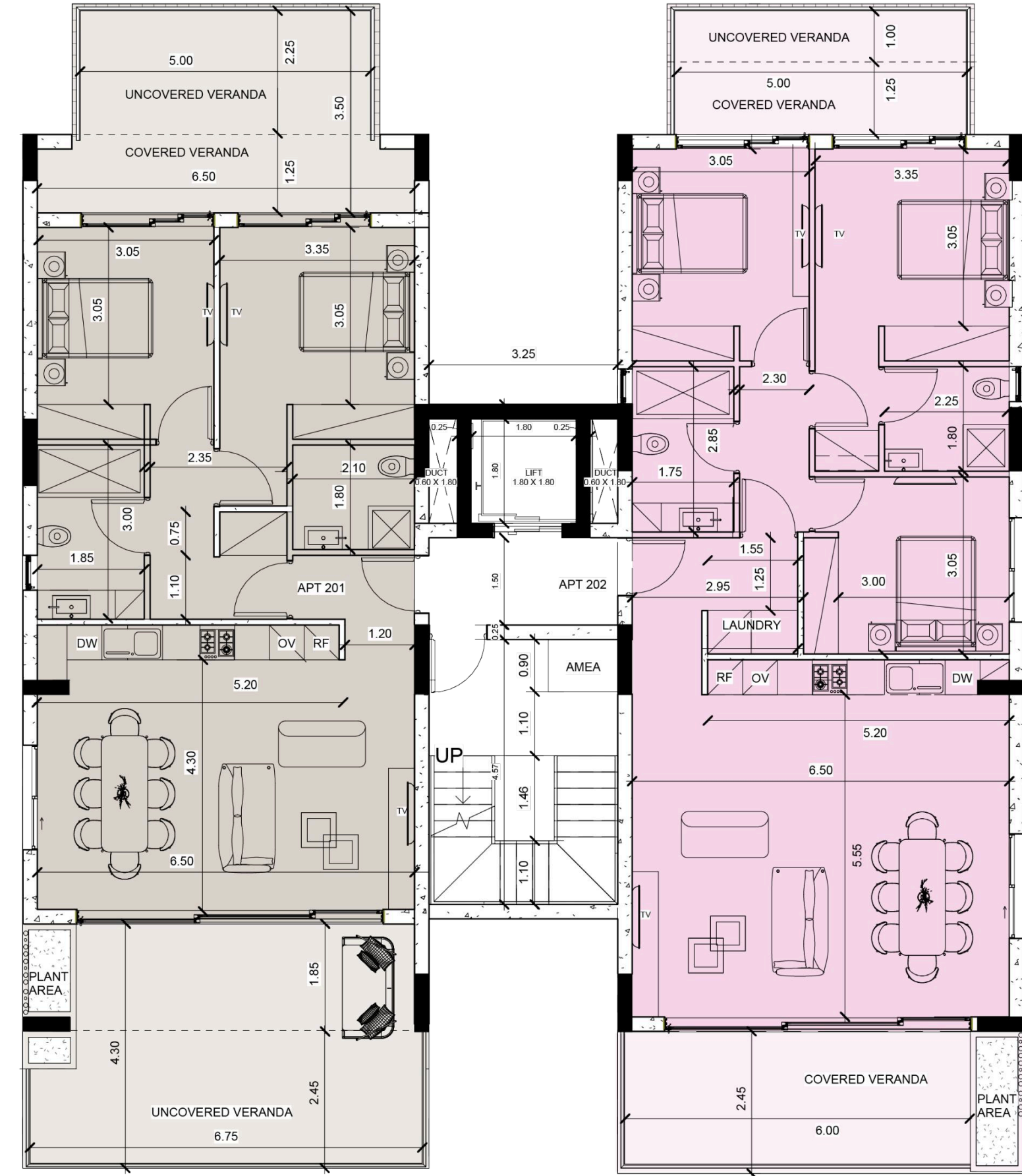






## havn residences second floor plans

- ▲ Premium Sanitary Ware
- ▲ Technogranite Countertop & Backsplash
- ▲ A/C Provisions
- ▲ Electric Heating Provisions
- ▲ Solar Water Heating System
- ▲ Pressurised Water System
- ▲ Fiber-Optic Internet Line
- ▲ Video Intercom System
- ▲ Security Entrance Door
- ▲ Thermally Insulated Aluminium Frames
- ▲ Covered Parking
- ▲ EV Charging Provision
- ▲ Storage Room
- ▲ Laundry Spot

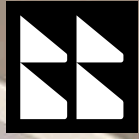


	FLOOR	BEDROOMS	BATHROOMS	COVERED PARKING	INTERNAL AREAS (M <sup>2</sup> )	COVERED VERANDAS (M <sup>2</sup> )	UNCOVERED VERANDAS (M <sup>2</sup> )	ROOF GARDEN (M <sup>2</sup> )	STORAGE ROOM (M <sup>2</sup> )	COMMON AREAS (M <sup>2</sup> )	TOTAL AREAS (M <sup>2</sup> )
<b>FLAT 201</b>	2nd	2	2	1	85	23	24	-	3	7	142
<b>FLAT 202</b>	2nd	3	2	1	107	22	5	-	3	8	145

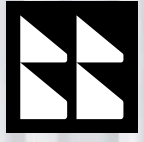
# havn residences 2 bedroom apartments



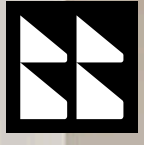










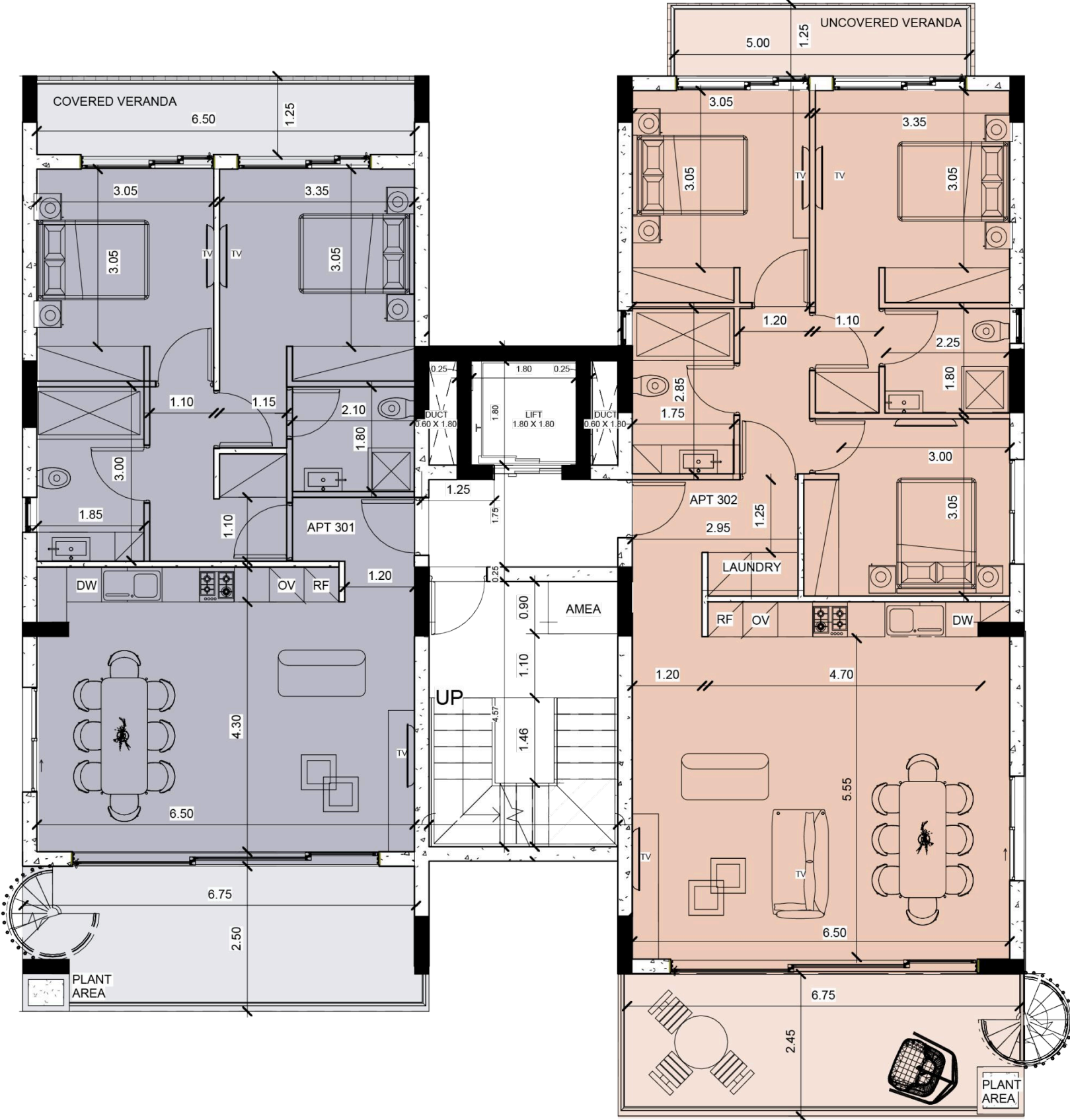






## havn residences third floor plans

- ▲ Premium Sanitary Ware
- ▲ Technogranite Countertop & Backsplash
- ▲ A/C Provisions
- ▲ Electric Heating Provisions
- ▲ Solar Water Heating System
- ▲ Pressurised Water System
- ▲ Fiber-Optic Internet Line
- ▲ Video Intercom System
- ▲ Security Entrance Door
- ▲ Thermally Insulated Aluminium Frames
- ▲ Covered Parking
- ▲ EV Charging Provision
- ▲ Storage Room
- ▲ Laundry Spot



	FLOOR	BEDROOMS	BATHROOMS	COVERED PARKING	INTERNAL AREAS (M <sup>2</sup> )	COVERED VERANDAS (M <sup>2</sup> )	UNCOVERED VERANDAS (M <sup>2</sup> )	ROOF GARDEN (M <sup>2</sup> )	STORAGE ROOM (M <sup>2</sup> )	COMMON AREAS (M <sup>2</sup> )	TOTAL AREAS (M <sup>2</sup> )
<b>FLAT 301</b>	3rd	2	3	1	85	26	-	65	3	11	190
<b>FLAT 302</b>	3rd	3	3	1	107	17	7	65	3	12	211

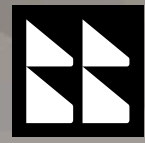
# havn residences 3 bedroom apartments











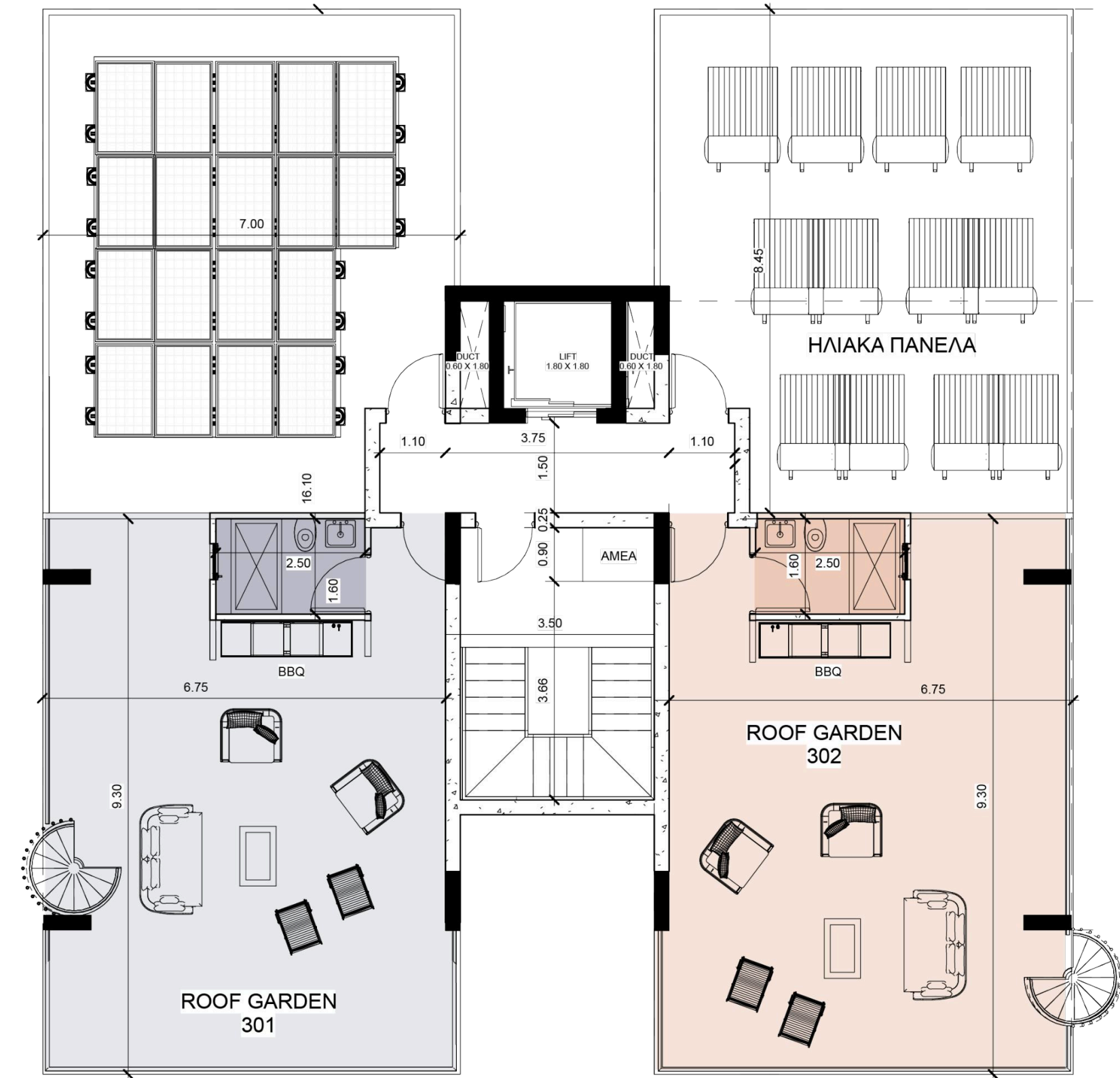






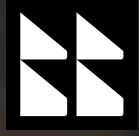
## havn residences roof garden plans

- ▲ Premium Sanitary Ware
- ▲ Technogranite Countertop & Backsplash
- ▲ A/C Provisions
- ▲ Electric Heating Provisions
- ▲ Solar Water Heating System
- ▲ Pressurised Water System
- ▲ Fiber-Optic Internet Line
- ▲ Video Intercom System
- ▲ Security Entrance Door
- ▲ Thermally Insulated Aluminium Frames
- ▲ Covered Parking
- ▲ EV Charging Provision
- ▲ Storage Room
- ▲ Laundry Spot



	FLOOR	BEDROOMS	BATHROOMS	COVERED PARKING	INTERNAL AREAS (M <sup>2</sup> )	COVERED VERANDAS (M <sup>2</sup> )	UNCOVERED VERANDAS (M <sup>2</sup> )	ROOF GARDEN (M <sup>2</sup> )	STORAGE ROOM (M <sup>2</sup> )	COMMON AREAS (M <sup>2</sup> )	TOTAL AREAS (M <sup>2</sup> )
<b>FLAT 301</b>	3rd	2	3	1	85	26	-	65	3	11	190
<b>FLAT 302</b>	3rd	3	3	1	107	17	7	65	3	12	211

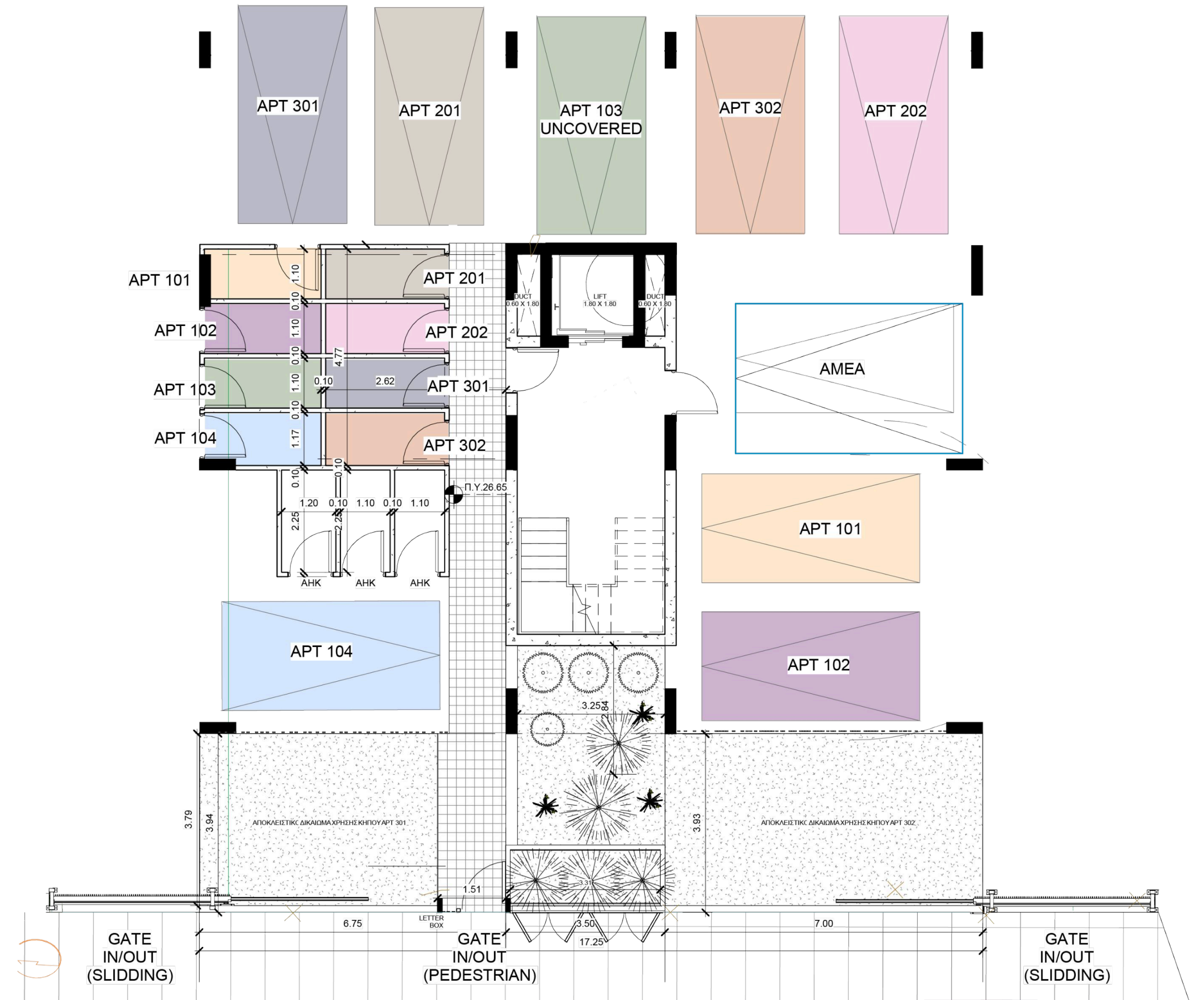


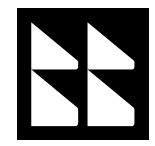




## havn residences ground floor plans

FLAT 101	COVERED PARKING	1
	STORAGE ROOM (M <sup>2</sup> )	3
FLAT 102	COVERED PARKING	1
	STORAGE ROOM (M <sup>2</sup> )	3
FLAT 103	COVERED PARKING	1
	STORAGE ROOM (M <sup>2</sup> )	3
FLAT 104	COVERED PARKING	1
	STORAGE ROOM (M <sup>2</sup> )	3
FLAT 201	COVERED PARKING	1
	STORAGE ROOM (M <sup>2</sup> )	3
FLAT 202	COVERED PARKING	1
	STORAGE ROOM (M <sup>2</sup> )	3
FLAT 301	COVERED PARKING	1
	STORAGE ROOM (M <sup>2</sup> )	3
FLAT 302	COVERED PARKING	1
	STORAGE ROOM (M <sup>2</sup> )	3





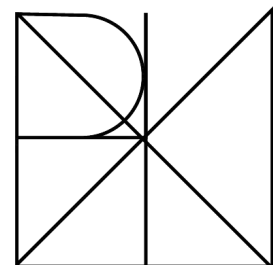
## havn residences apartment area schedule

	FLOOR	BEDROOMS	BATHROOMS	COVERED PARKING	INTERNAL AREAS (M <sup>2</sup> )	COVERED VERANDAS (M <sup>2</sup> )	UNCOVERED VERANDAS (M <sup>2</sup> )	ROOF GARDEN (M <sup>2</sup> )	STORAGE ROOM (M <sup>2</sup> )	COMMON AREAS (M <sup>2</sup> )	TOTAL AREAS (M <sup>2</sup> )
FLAT 101	1st	1	1	1	50	17	-	-	3	4	74
FLAT 102	1st	1	1	1	50	17	-	-	3	4	74
FLAT 103	1st	1	1	1	50	14	-	-	3	4	71
FLAT 104	1st	1	1	1	50	14	-	-	3	4	71
FLAT 201	2nd	2	2	1	85	23	24	-	3	7	142
FLAT 202	2nd	3	2	1	107	22	5	-	3	8	145
FLAT 301	3rd	2	3	1	85	26	-	65	3	11	190
FLAT 302	3rd	3	3	1	107	17	7	65	3	12	211



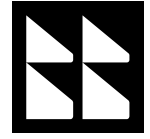
Our team is dedicated to ensuring that every aspect of the project is carefully considered, from inception to completion.

Each member of our team brings a wealth of knowledge and experience to the table, and their collaborative efforts have resulted in a project that optimises space, is energy efficient, aesthetically pleasing and comfortable to live in.



**POLINA SOKRATOUS**  
ARCHITECTURE & DESIGN





# havn residences specifications

We dedicate ourselves to deliver a high-quality, energy efficient, sustainable, durable and well-constructed building.

Our team meticulously oversees the selection of quality materials and closely monitors the workmanship to ensure full compliance with the design, the specifications and the planning and building permits of the project.

The following outlines a high-level summary of the materials and the specifications of the project.

## CHANGES / ALTERATIONS

We are available to discuss any internal changes or alterations that you may require for your apartment, as long as they do not affect the design, character, or structural integrity of the building. Any proposed alterations will be subject to approval from our company and will be contingent on the project's progress. In the event that the proposed changes are approved and result in additional charges, the client will be responsible for covering those charges.

It is important to note that our company reserves the right to make minor alterations to the technical specifications of the building for aesthetic or technical reasons, as long as they do not impact the individual apartments.

## STRUCTURE

The structure is designed and will be constructed in full compliance with earthquake-resistant building regulations (Eurocode). The structure will consist of a reinforced concrete raft type foundation as well as reinforced concrete columns, beams and floor-slabs.

## EXTERIOR SHELL & FINISHES

The exterior walls will be built with 250mm thick hollow clay blocks and lined with adhesive, reinforced mesh and polystyrene, for added energy efficiency.

The exterior walls will feature: 2 coats of spatula and 3 coats of paint or grafiato, with a touch of HPL or a comparable material where needed, to meet the design requirements.

The exterior ceilings will feature: 2 coats of spatula and 3 coats of paint.

The roof will be equipped with a cement screed, thermal insulation and a waterproofing system.

## INTERIOR SHELL & FINISHES

The interior walls separating the areas within an apartment will be built with 100mm thick hollow clay blocks while the interior walls separating two or more apartments will be built with 250mm thick hollow clay blocks.

Interior walls, apart from the bathrooms, will feature 2 coats of plaster, 2 coats of spatula and 3 coats of paint. Bathroom walls will feature ceramic tiles from floor to ceiling.

The interior ceilings will feature: 2 coats of spatula and 3 coats of paint.

## FLOOR FINISHES

The living room, the dining room, the kitchen and the bathrooms will be fitted with ceramic tiles while the bedrooms will be fitted with either ceramic tiles or laminate parquet flooring. The verandas will be fitted with ceramic tiles.

Marble flooring / Ceramic Tiles, will be installed at the entrance lobby, floor lobbies, common staircases, and the elevator. Ceramic tiles will be installed on the outdoor entrance corridor while the driveway, the parking spaces and the storage rooms will consist of slightly rough finished concrete or asphalt.

## EXTERIOR DOORS & WINDOWS

The entrance door to the building will be a safety and fire resistant door equipped with high-quality hardware. The entrance door to the apartments will be constructed from durable, high-strength metal safety doors and fitted with high-quality hardware.

The windows and the balcony doors will feature thermal break aluminium frames with sliding or hinged sections and thermal double-glazed windows, designed to improve energy efficiency and reduce heat loss. Additionally, all aluminium frames for the windows and balconies of the apartments will include provisions for insect screens.

## INTERNAL DOORS

The internal doors of the apartments will be made of Melamine Faced Chipboard and will be fitted with high-quality hardware.

## KITCHEN CABINETS

Kitchens Cabinets will consist of Melamine Faced Chipboard and will be equipped with soft closing systems. There will be provisions in the kitchen cabinets for the oven, stovetop, hood, dishwasher and refrigerator. Kitchen countertops and backsplashes will consist of reconstructed granite / granite.

## WARDROBES

Wardrobes will consist of Melamine Faced Chipboard and will be equipped with soft closing systems.

## SANITARY WARE

Every bathroom will be furnished with quality sanitary fittings (DURAVIT & GEBERIT), mixers (HANSGROHE). The wall mounted toilets will be furnished with soft-closing seats and the wash-basins will be paired with a vanity unit. All accessories and faucets will be finished in chrome or black colour.

## A/C & HEATING

The apartments will be equipped with provisions for A/C split units and electric heating units.

## ELEVATOR

KONE 6-person capacity elevator will be installed.

## ELECTRICAL INSTALLATIONS

number of double power sockets and two way lighting switches. The common area of the living and dining rooms will feature at least four double electric sockets, the kitchen at least 3 and each bedroom at least 3.

Fixed appliances such as the oven, stovetop, hood, dishwasher, refrigerator, washing machine, and dryer will have dedicated power points.

A TV point and a network point will be available in the living room, all bedrooms, and the main veranda, while a telephone point will be available in the living room.

Provisions for heater towel racks will be installed in the bathrooms.

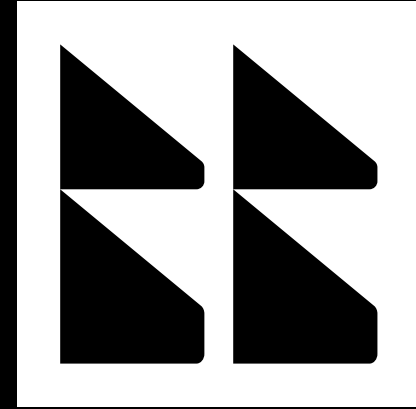
Each apartment will have a video entry system to control access to the main building entrance. In addition, provisions will be made for the installation of a separate security alarm system at each apartment and an electric bell at each entrance.

Motion sensor lights will be installed in the lobbies and the parking area, and a time switch will control the staircase lighting. Furthermore, provisions for electric car chargers will be available at every parking space.

## MECHANICAL INSTALLATIONS

Hot and cold water will be supplied through high pressure PVC insulated pipes (pipe-in-pipe), connected to water manifolds located on covered verandas. Hot water will be supplied through a solar water heater system installed in the roof, consisting of solar collectors and pressure system tanks. Cold water tank and water pressure pump will be installed as well. Potable water will be available in the kitchen.

All water drainage pipes will be made of uPVC. Rainwater pipes will be installed at the verandas to the ground floor level.



bb  
homes

Angaiou 3,  
Kato Polemidia, 4154,  
Limassol, Cyprus

+357 25 211 466  
info@bbhomes.com  
www.bbhomes.com

building balance

#### DISCLAIMER

The information contained in this brochure does not constitute a representation by the Owner / Developer or its agent and is provided for information and/or conceptual purposes only. It is meant only for promotional purposes and has no legal value. The Developer / Owner retains the copyright of material in this brochure and may change all information contained at any time without notice. All matters will be governed by the applicable sale and purchase agreement between the parties and the specifications attached to it.

The exterior illustrations and computer generated images included in this brochure do not take into account the neighbouring buildings, physical structures, streets and landscape. They are provided solely to give a general idea of the final look and feel of the exterior of the project, and minor variations might apply. The interior illustrations and computer generated images included in this brochure are intended for conceptual purposes only and are not representative of any space or of any size or dimension of any space nor meant to represent the actual interior design that will be delivered. They are provided solely to give an idea to the purchases of how they could potentially design their spaces.