



forma



bbf:



coastal calm. city connection.

# :forma

**Introducing :forma — a boutique residential experience in Germasogeia, one of Limassol's most vibrant and desirable districts.**

Just moments from the Mediterranean Sea and surrounded by cafés, fine dining, and premium services, Forma captures the essence of modern coastal living.

Thoughtfully designed and beautifully executed, Forma offers a sense of balance — between the energy of the city and the tranquility of home.

This is more than a residence. It's a lifestyle.



## **crafted for modern living**

:forma offers a refined collection of only seven residences, ensuring peace, privacy, and exclusivity. Choose between spacious 1- and 2-bedroom apartments, or elevate your lifestyle with the exceptional 3-bedroom penthouse, complete with a private roof terrace designed for unforgettable gatherings and quiet sunsets.

Every home has been carefully planned to enhance everyday life, with open-plan living areas, generous covered verandas, and large windows that flood each space with natural light.

Interior spaces flow effortlessly, offering both functionality and sophistication — whether you're entertaining guests or simply enjoying a moment of quiet at home.





# major benefits

- | Sought-after Germasogeia address;
- | Only 7 residences — boutique, private and secure;
- | 3 minutes to Dasoudi Beach;
- | 10 minutes to 5-star resorts and marinas;

- | 15 minutes to Limassol Marina & historic Old Town;
- | Direct access to international schools, shops & dining;
- | Premium lifestyle & long-term investment value.



# :location

Set in a quiet residential street just off the main avenue of Germasogeia,

Forma enjoys the perfect blend of accessibility and privacy. Step outside and you're just minutes away from some of the best that Limassol has to offer:  
The soft sands and clear waters of Dasoudi Beach  
• Restaurants, artisan cafés, and local bakeries  
• St. Raphael Marina — a hub for leisure and yachting  
• The city's business district, buzzing with global companies  
• Top private schools, including Foley's and Grammar School  
• Designer shopping, wellness centers, and cultural hotspots

Whether you're heading to the mountains for a weekend escape, catching a flight, or enjoying a beachside stroll at sunset — :forma places you at the center of it all.



- 1 Limassol's Olympic Swimming Pool
- 2 Filippou Papadopoulos Pharmacy
- 3 The Garden Restaurant
- 4 Starbucks
- 5 Ocean Basket
- 6 Costa Coffee
- 7 Plus Discount Market
- 8 Cyprus Post Office
- 9 Christina Metaxa Pharmacy
- 10 Sigma Bakery
- 11 Pet Shop
- 12 Atlantica Miramare
- 13 The Royal Apollonia 5-star



# • exterior



**10 minutes to 5-star  
resorts and marinas**





# ◉ exterior

**Large verandas extend  
the living space outdoors**





# :choice of properties

UNIT NO	PROPERTY TYPE	BED-ROOMS	BATH-ROOMS	POOL	NO OF PARK SPACES	INDOOR AREA M²	COV. VERANDA M²	FLOOR	PRIVATE INTERIOR	ROOF TERRACE M²²	COM-MON AREA PER UNIT M²	TOTAL AREA M²
A101	Apartment	1	1		1	59.5	12.2				18	92
A102	Apartment	2	2		1	88.2	19.7				28	138
A201	Apartment	1	1		1	59.5	12.2				18	92
A202	Apartment	2	2		1	88.2	19.7				28	137
A301	Apartment	1	1		1	59.5	12.2				18	93
A302	Apartment	2	2	YES	1	88.2	19.7	5th	24.3	114	28	137

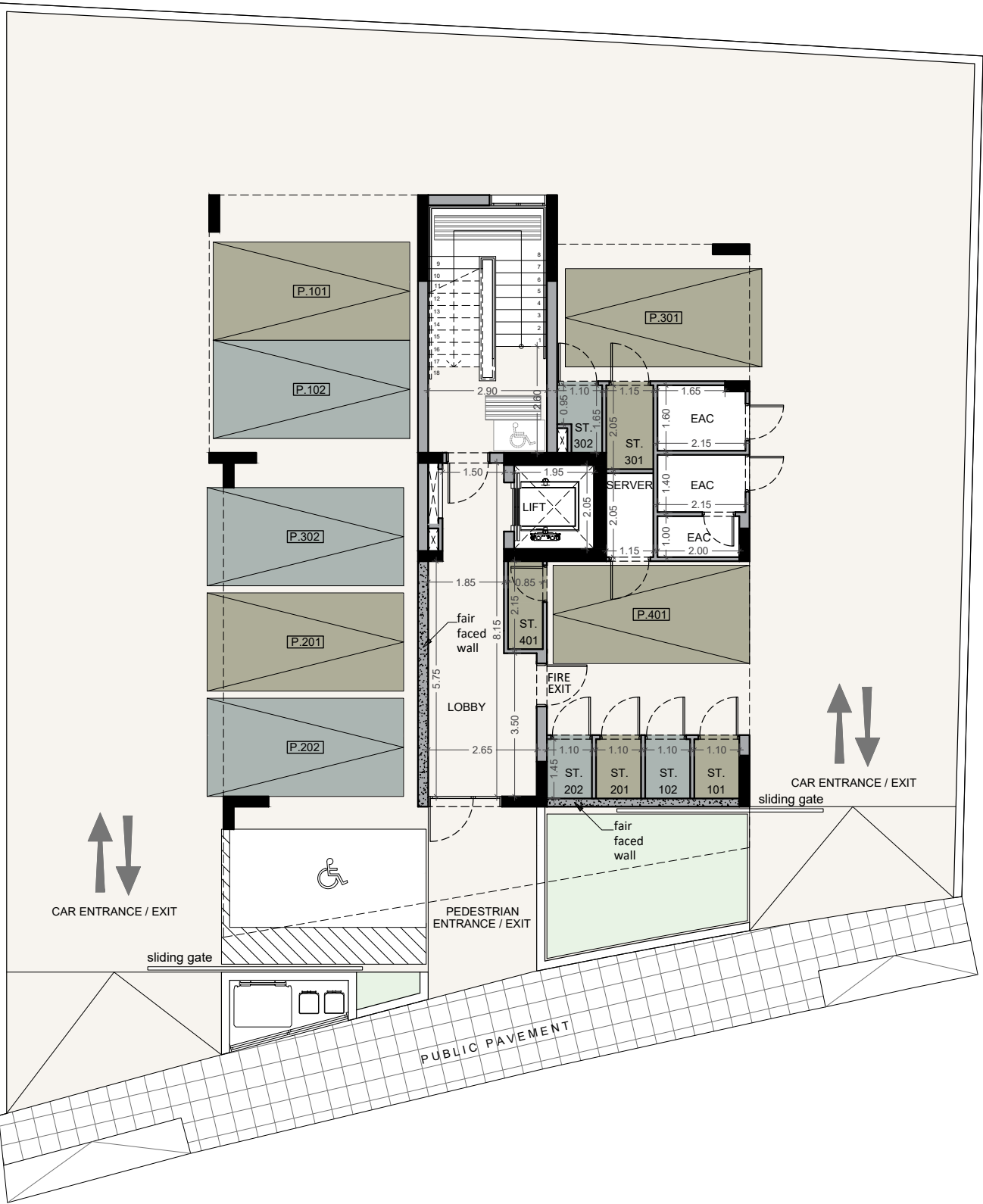
NOTE: the areas stated above may slightly differ upon issuance of relevant authority permits





# ⦿ floor plans

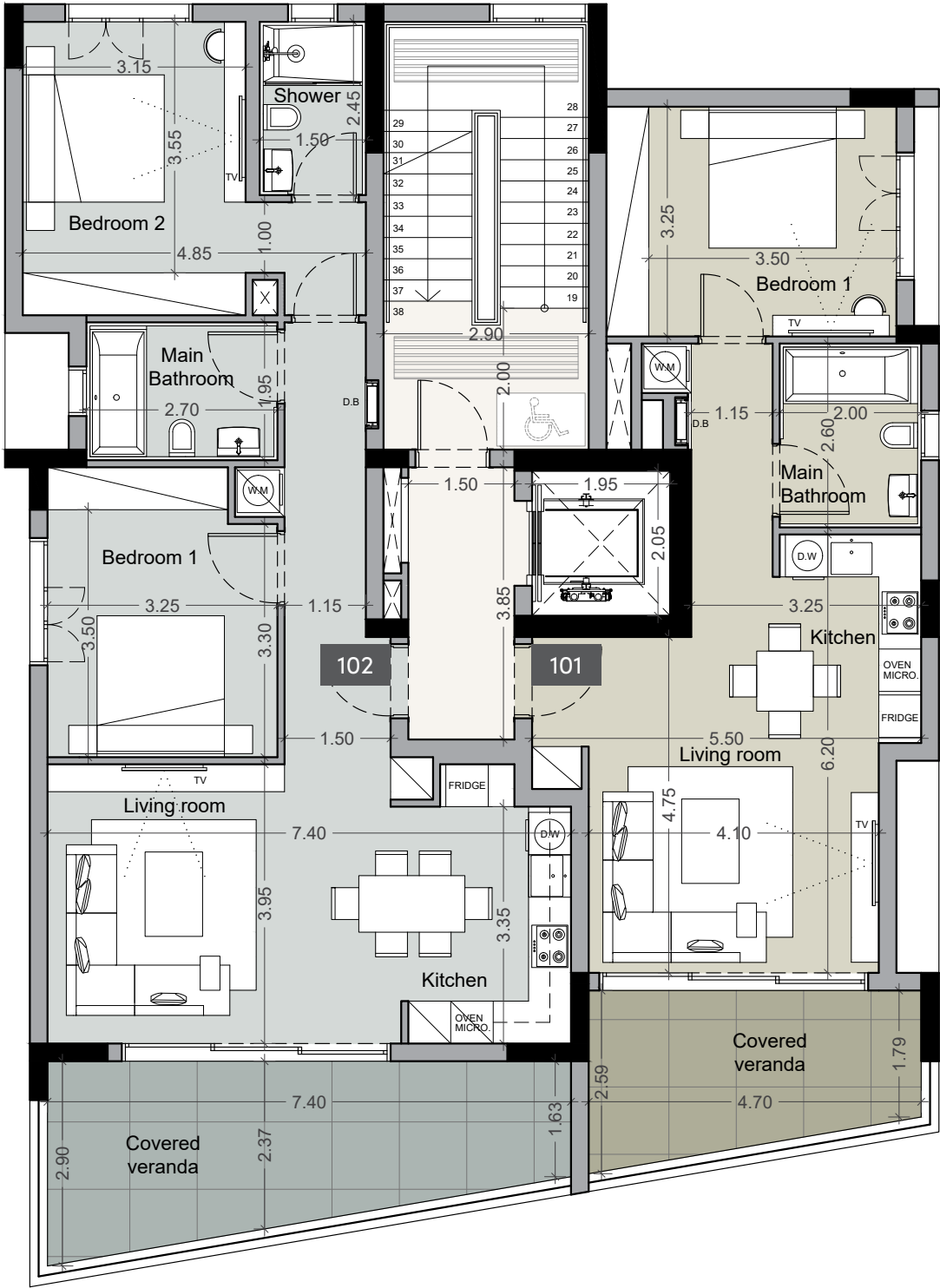
ground floor



# ⦿ floor plans

1st floor

UNIT N°	TOTAL AREA M²
101	92
102	138

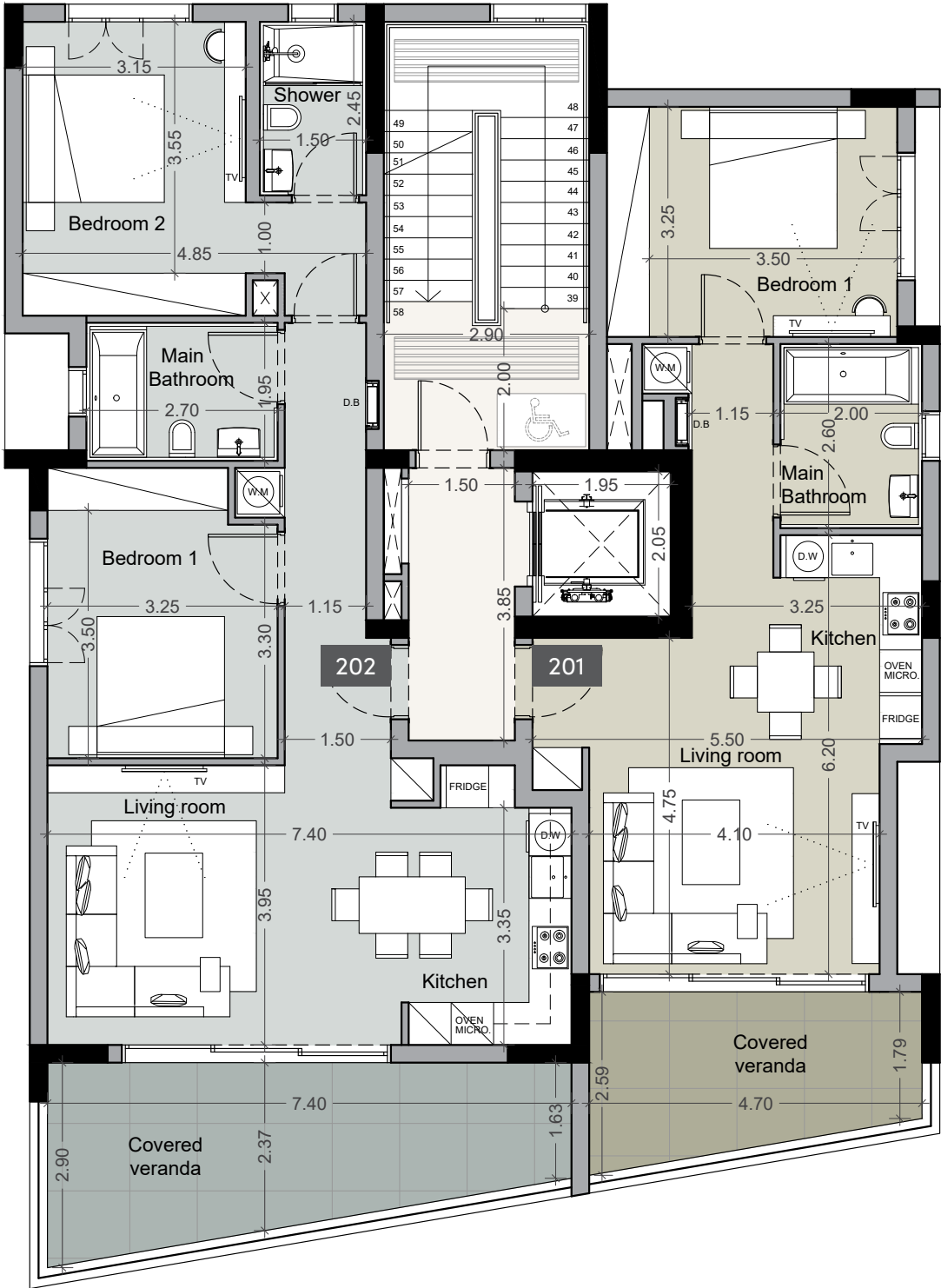




# • floor plans

2nd floor

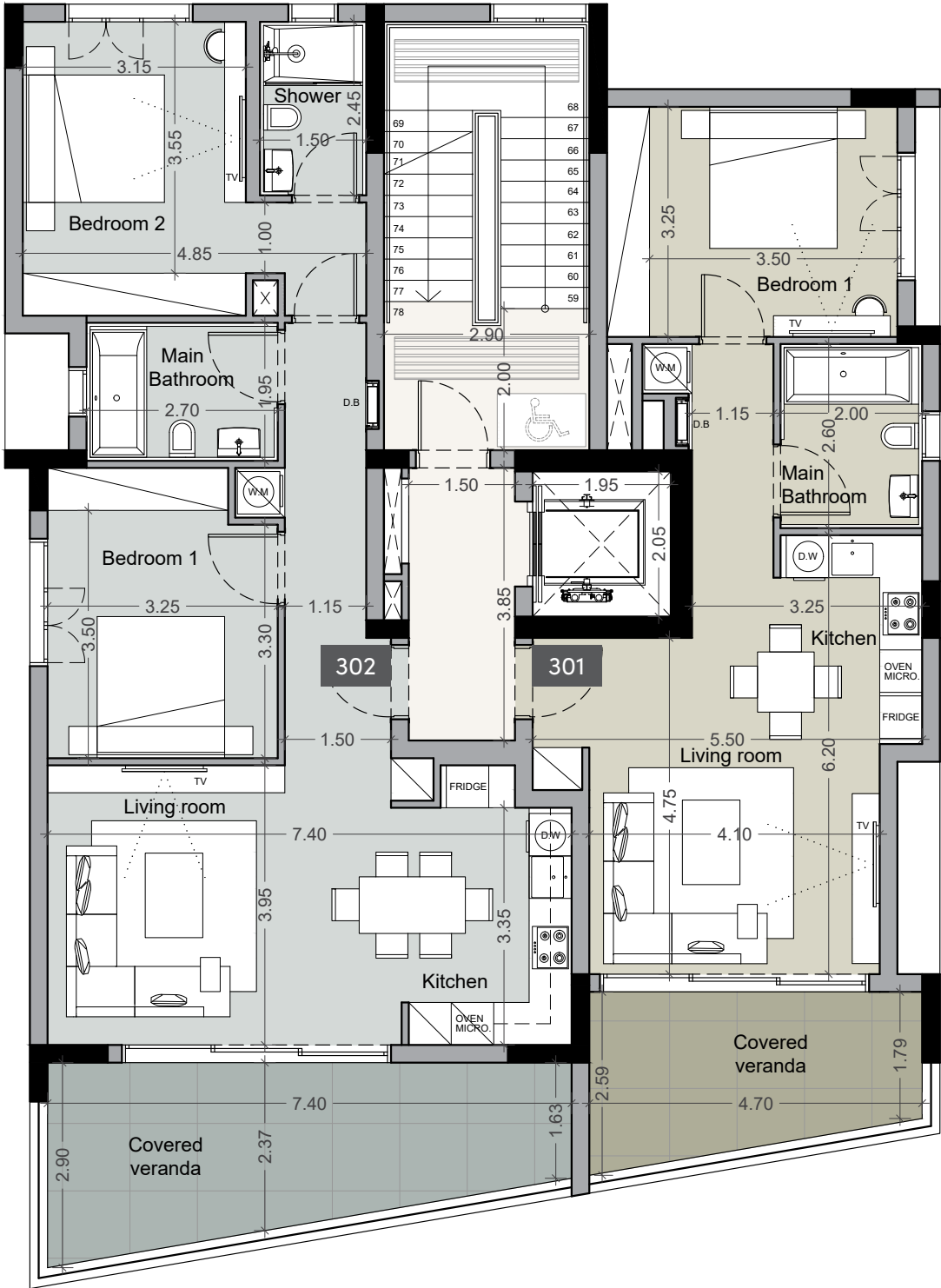
UNIT N°	TOTAL AREA M²
201	92
202	137



# • floor plans

3rd floor

UNIT N°	TOTAL AREA M²
301	93
302	137

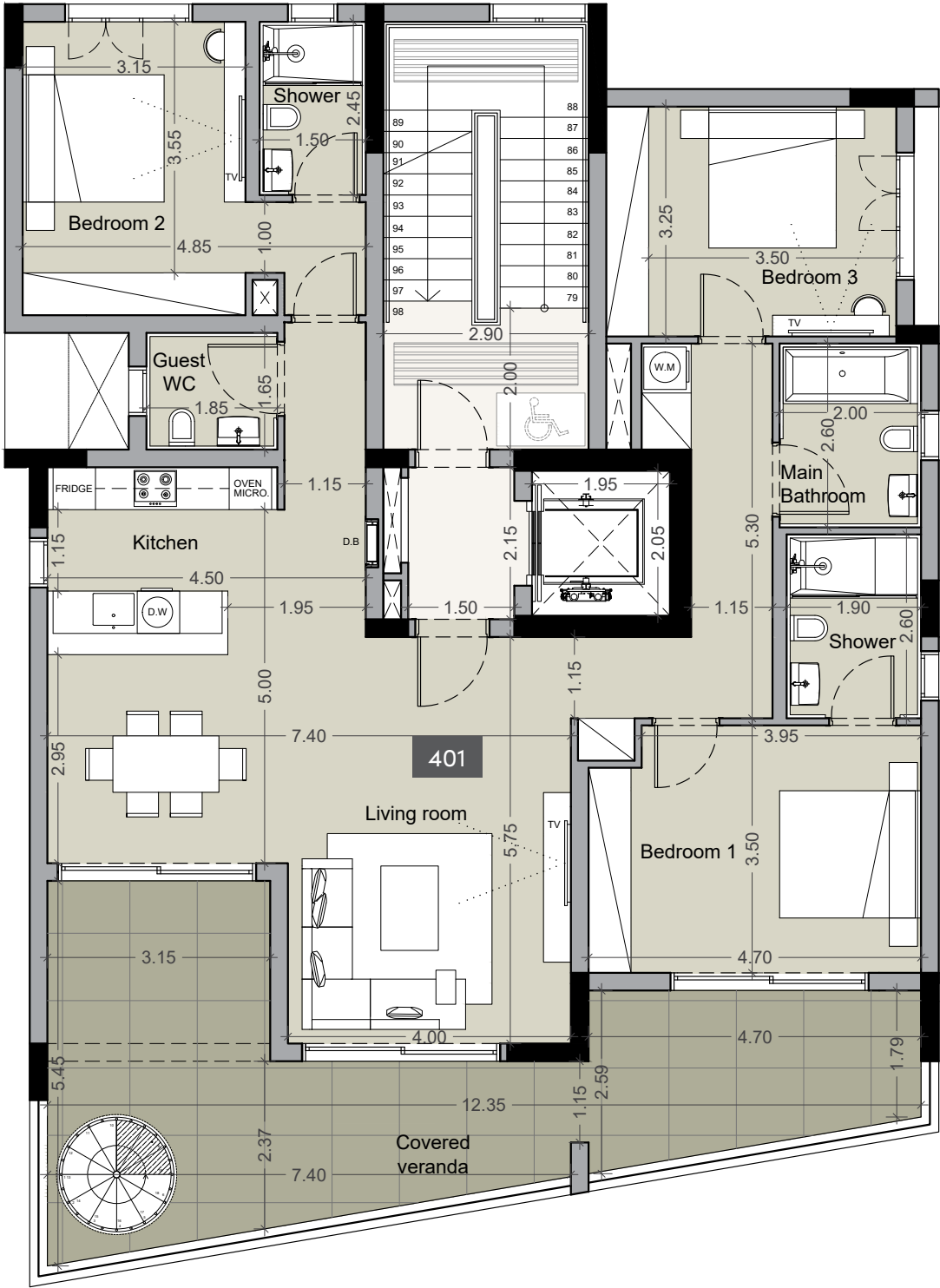




# • floor plans

4th floor

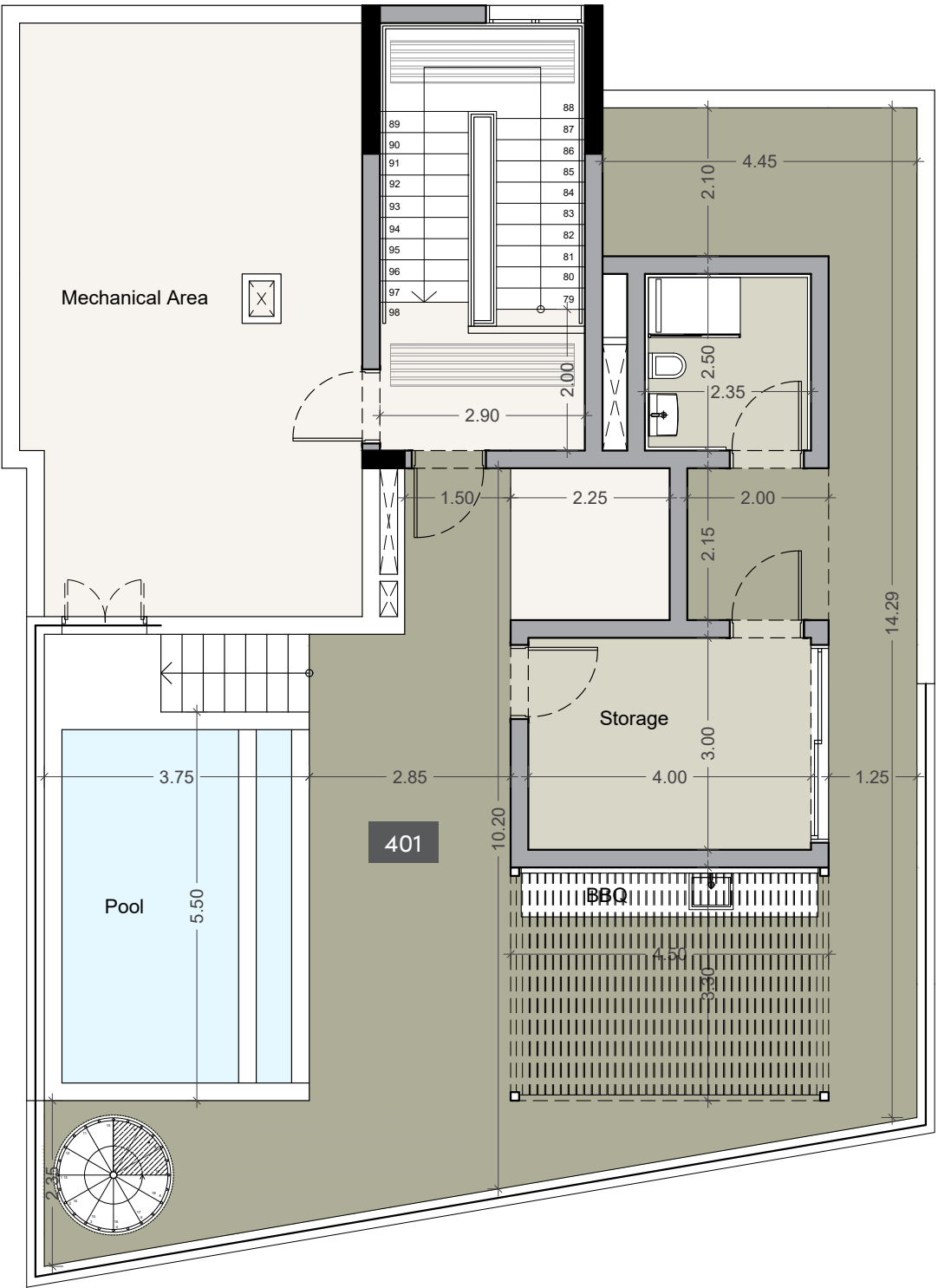
UNIT N°	TOTAL AREA M²
401	376



# • floor plans

roof terrace

UNIT N°	ROOF TERRACE M²
401	114





# •signature finishes

## bbf:prime

Every property is delivered with signature top standard finishes:

- Fully completed finishings;
- Semi-solid parquet floors in each room;
- Marble floor and walls in the toilets and bathrooms;
- High ceilings (3.15 m);
- Security and fireproof entrance doors;
- Water heated floors;
- Air conditioning;
- High standard sanitary ware from European brands;
- Thermal aluminum window frames with double glazing;
- High standard kitchen cabinets;
- High standard wardrobes from European brands;
- Soft closers;
- Door stoppers.

**Note:** movable furniture, home appliances & interior items are extras





## bbf: Head office

### Head Office in Limassol

28 Ampelakion Street, Germasogeia,  
4046 Limassol, P.O.Box 70649, Cyprus

**Office:** +357 25 315 318  
[info@bbf.com](mailto:info@bbf.com)

## bbf: Greece

### Office in Athens

88 Vasilissis Sofias Avenue,  
115 28 Athens, Greece

**Office:** +30 210 775 5388  
[greece@bbf.com](mailto:greece@bbf.com)



[bbf.com](http://bbf.com)