

LANDOOR
106



LANDOOR
REAL ESTATE



LANDOOR

106



— This exclusive compound features five twin villas a total of ten modern residences, each designed with a refined sense of comfort and privacy. Every home is a ,three-bedroom apartment with a modern open-plan layout .seamlessly connecting living, dining, and kitchen area

Each unit includes custom-made kitchen cabinetry, built-in wardrobes, and large double-glazed windows that flood the interiors with natural light. Every residence enjoys a private backyard and covered verandas, ideal for outdoor living and relaxation

Additional amenities include a private storage room and covered parking space on the ground floor, ensuring both .functionality and convenience

Together, the villas combine elegant architectural design with .thoughtful spatial planning to create a contemporary community setting



Archbishop Makariou III Avenue
Miltos Building 32, Office 1- 4
Larnaca 6017, Cyprus.

W. www.landoor.net

T +357 99 161 048

E. info@landoor.net

LANDOOR

106



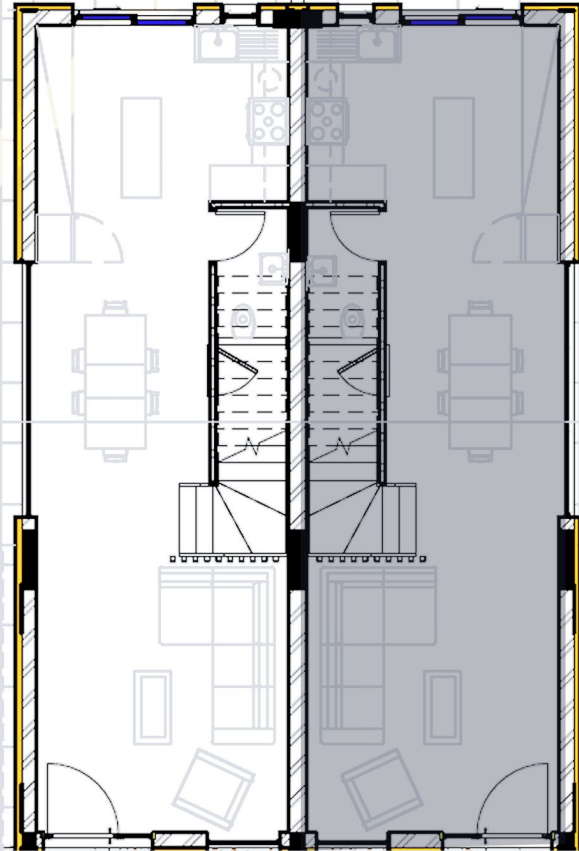
- Reinforced concrete frame, designed to local earthquake regulations.
- External wall blocks of 25 cm thickness for high insulation with additional 8 cm of thermal insulation.
- Provision for air conditioning in each room.
- Water tank of 1000 liters with solar panel and electric water heater for each house.
- Interior doors - finish in laminate mat, solid wood door frame, door lock with key.
- Aluminum thermal windows with double glazing, low emissivity, embedded handles.
- High quality exterior and interior paint, and durable long life cladding materials.

- Sanitary units & fittings will be Grohe or equivalent & will be placed according to the plans in white color & of high quality.
- All kitchen worktops & cupboards will be made of laminated wood or melamine imported from Italy & all kitchen mechanism will be soft close.
- Melamine cabinets with thermoplastic doors & choice of handles.
- Large marble looking porcelain tiles for all floors.
- Marble looking porcelain tiles in all bathroom floors and walls.
- Modern internal light fixtures.
- Photovoltaic panels for each house.



LANDOOR
REAL ESTATE

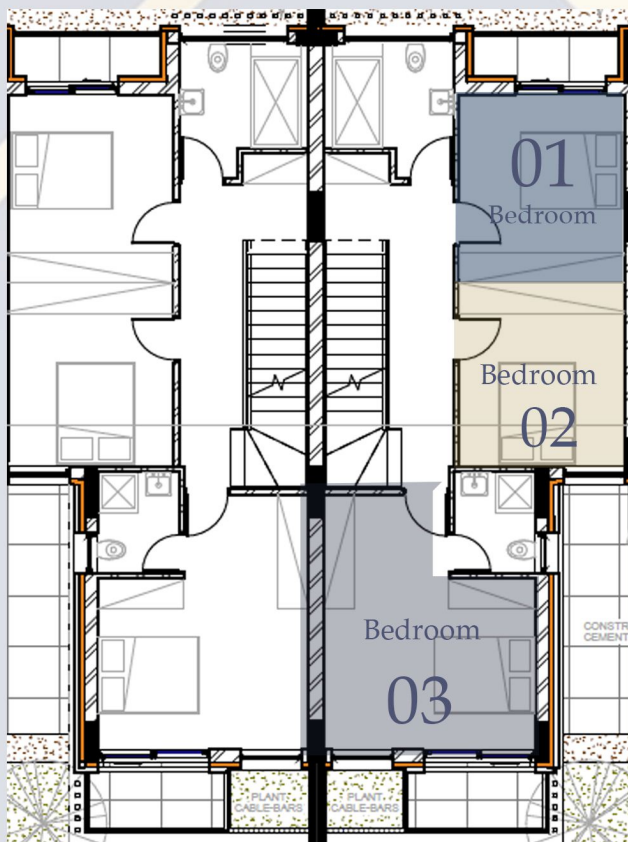
GROUND FLOOR





LANDOOR
REAL ESTATE

FIRST FLOOR



3 3 1

01



03

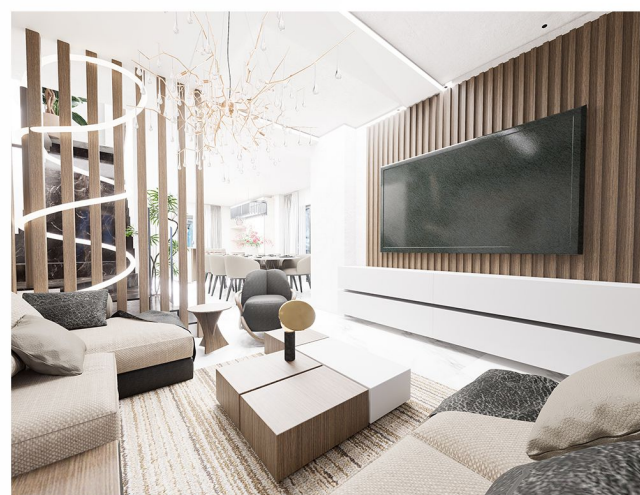


02



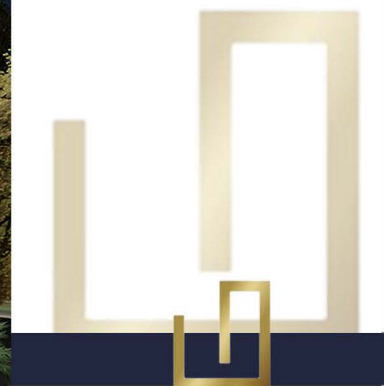
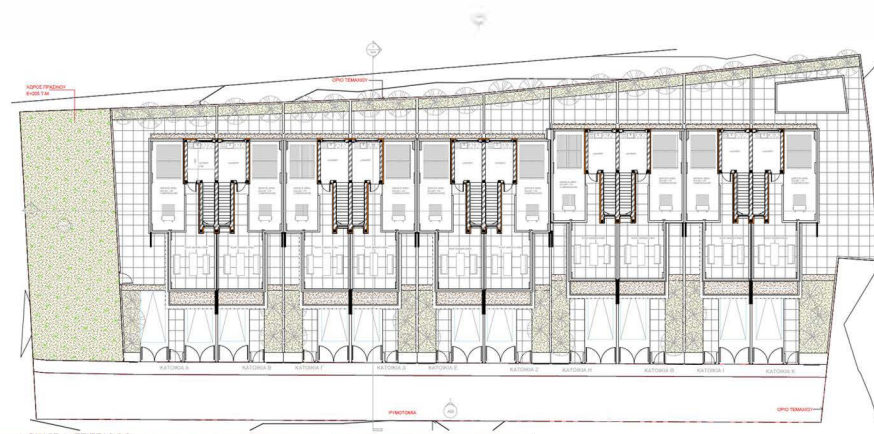
03



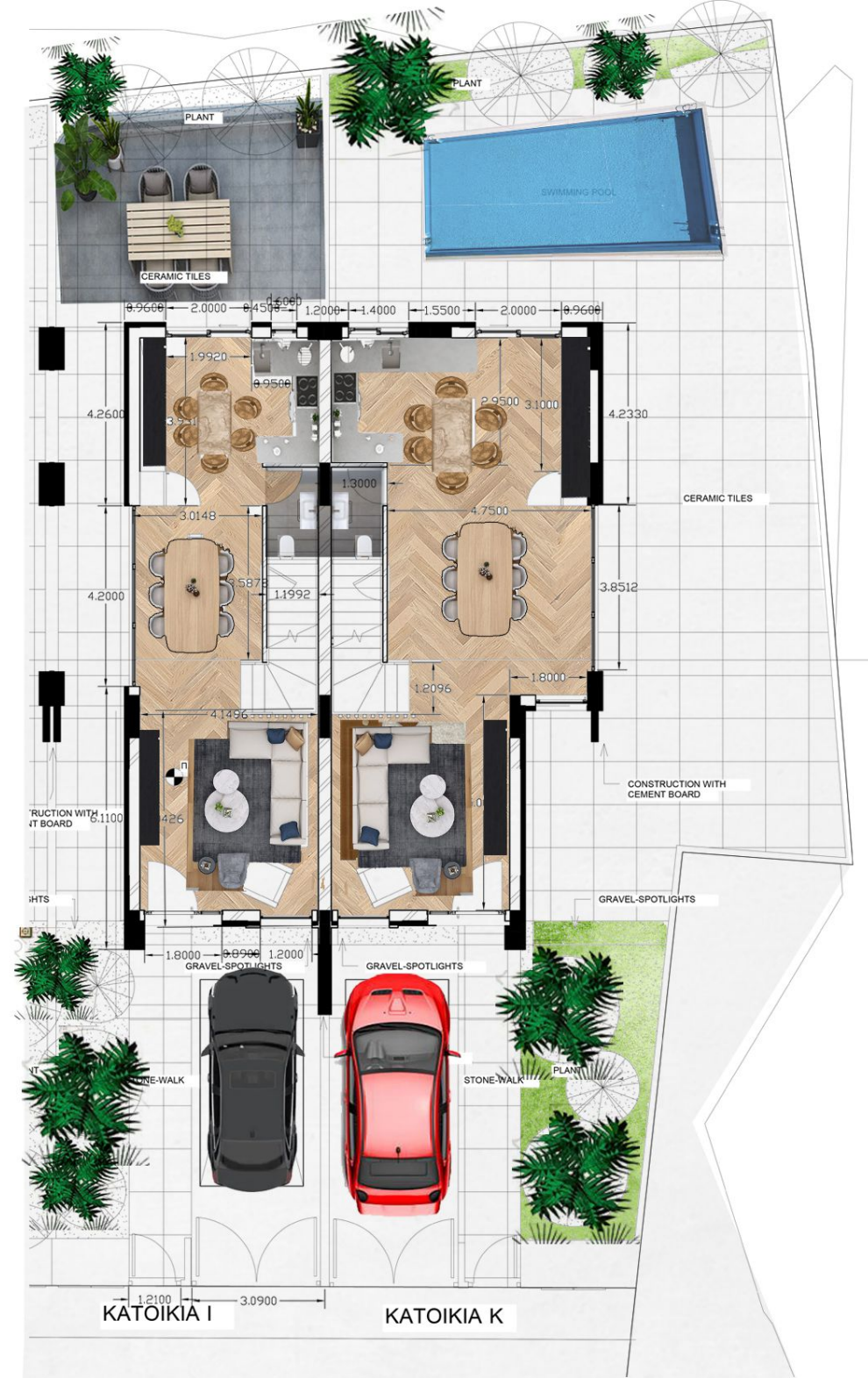




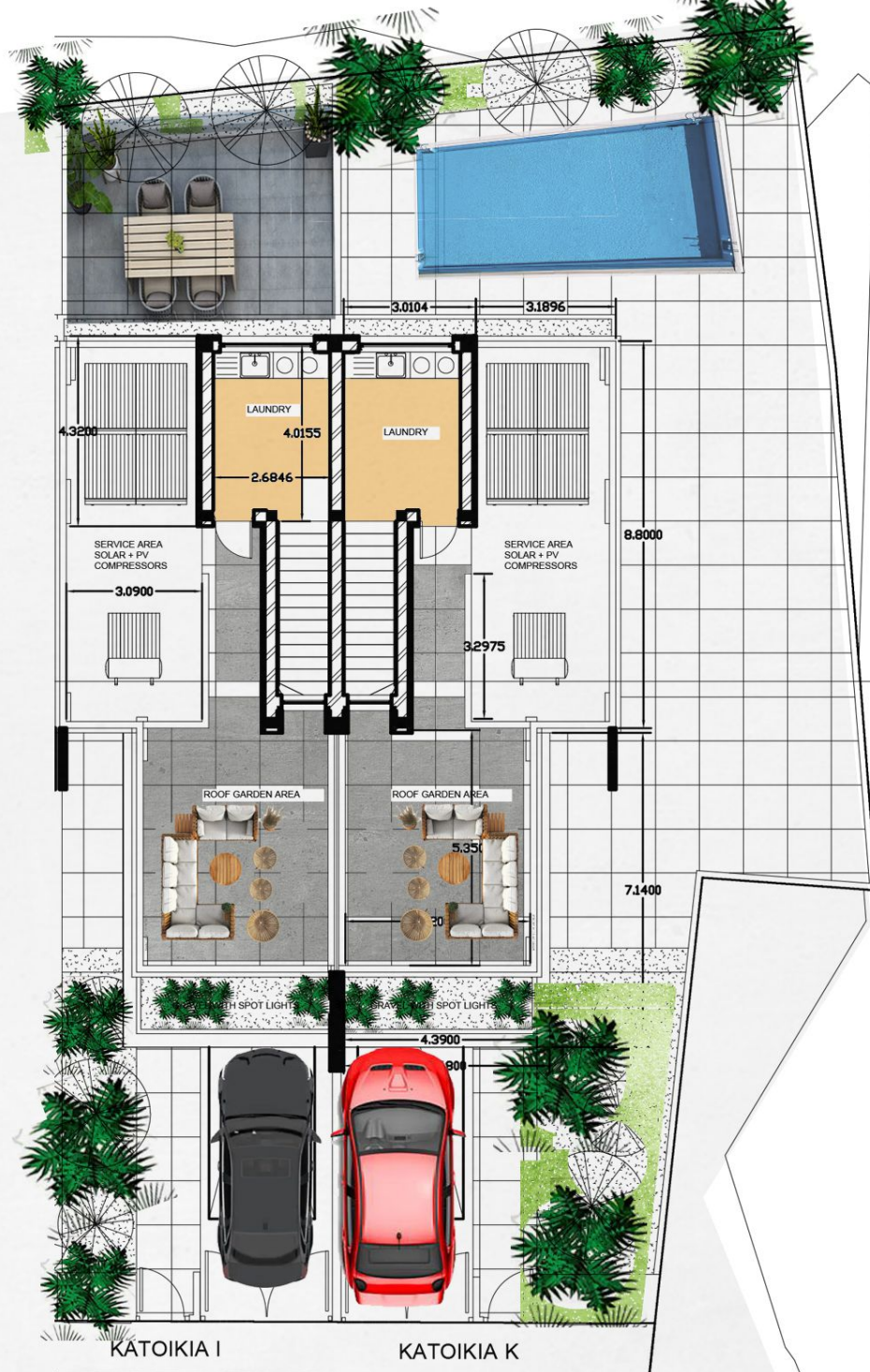
HOUSE	BEDROOMS	BATHROOMS	COVER AREA(sqm)	VERANDA (sqm)	ROOF GARDEN (sqm)	PLOT (sqm)
1	3	2+1	148	9	65	219
2	3	2+1	132	9	65	148
3	3	2+1	132	9	65	148
4	3	2+1	132	9	65	151
5	3	2+1	132	9	65	153
6	3	2+1	132	9	65	157
7	3	2+1	132	9	65	161
8	3	2+1	132	9	65	165
9	3	2+1	132	9	65	169
10	3	2+1	148	9	65	278



LANDOOR
REAL ESTATE



Ground Floor Plan



Rooftop Garden Plan



LANDOOR
REAL ESTATE



Contact us :



LANDOOR
REAL ESTATE

Archbishop Makariou III Avenue
Miltos Building 32, Office 1-4
Larnaca 6017, Cyprus.

W. www.landoor.net

T. +357 99 161 048

E. info@landoor.net

www.landoor.net