



BEYOND  
properties

# LANDMARK

Larnaca

Project Specifications  
2024







# SALT LAKE

## Unobstructed Views



**LARNACA SALT LAKE**  
DROSHIA AREA

The Landmark is nestled in the Droshia Area of Larnaca Town, Cyprus's third-largest coastal city, boasting a population of approximately 144,000.

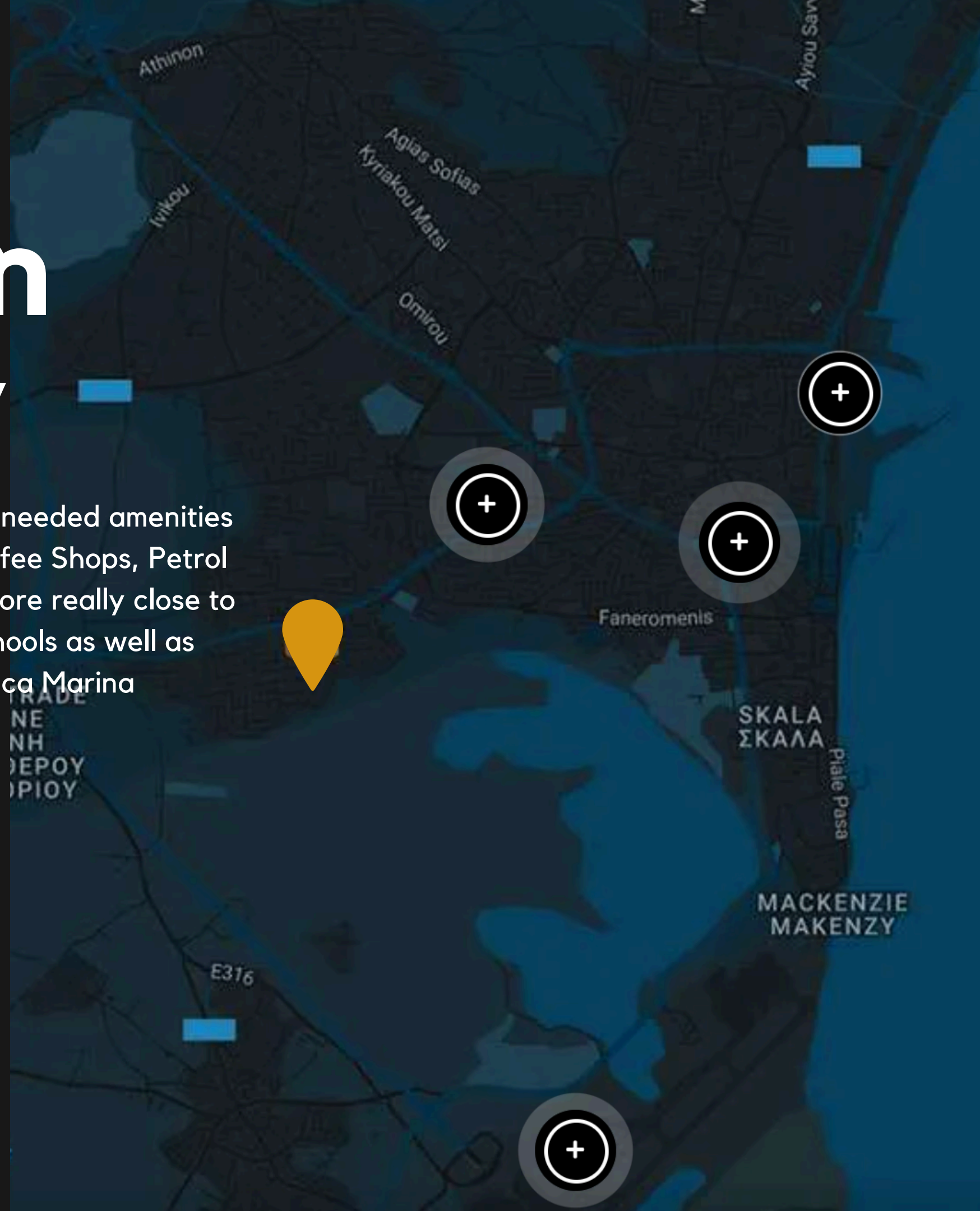
As the southernmost city of Cyprus, Larnaca is renowned for its stunning landscapes, an international airport, rich historical sites, pristine blue flag beaches, and a host of other attractions waiting to be explored.





# Location near by

Located in a quiet area with all the needed amenities such as Supermarkets, Bakery, Coffee Shops, Petrol station 1~2 minutes away. Furthermore really close to Hospitals, Elementary and High Schools as well as the International Airport and Larnaca Marina



**Larnaca Gen. Hospital**  
5 minutes

**Larnaca Marina**  
14 minutes

**Elementary School**  
1 minute

**International Airport**  
15 minutes

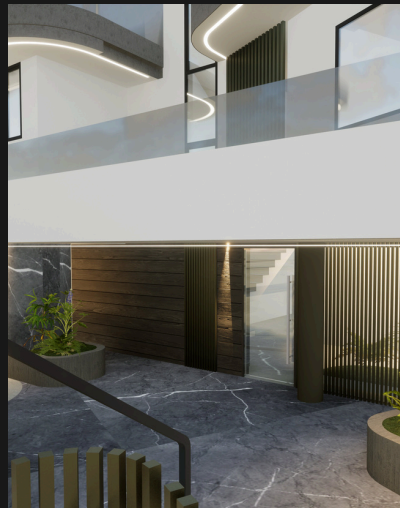




# Design & Elegance

## External Design

This V-shaped floor plan showcases a modern and elegant design, featuring five apartments — four two-bedroom and one one-bedroom. The spacious and well-lit apartments offer comfortable living spaces with a perfect blend of functionality and aesthetics. The unique shape of the floor plan ensures privacy and allows for breathtaking views from each unit. Overall, it's a thoughtfully designed space that offers a luxurious living experience.







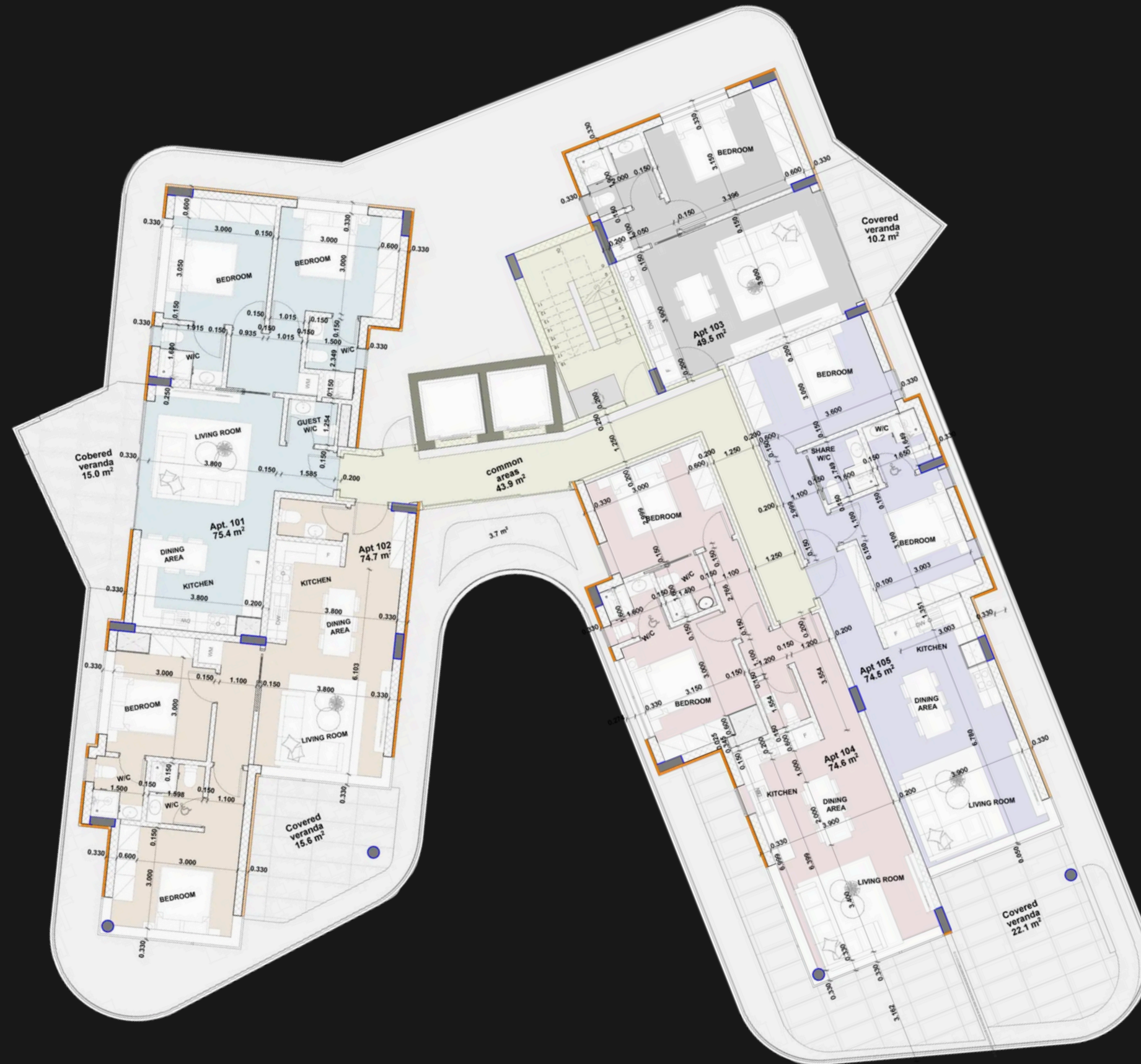
# Interior Design Concept



## Creating Comfort

The apartments boasts a modern design that exudes luxury and sophistication. The interior is fitted with the latest technology features, ensuring that all the conveniences of modern living are at your fingertips. The living space is bright and airy, with large windows that flood the apartment with natural light. The bedrooms are spacious and comfortable, providing the perfect sanctuary for relaxation. With its sleek and stylish design, this apartment offers the perfect combination of comfort and elegance.





# Floors 1 - 4

## Landmark Project specs

Our new development project – “Landmark” of a complex of apartments with five floors and a total of 24 apartments.

### 2 Bedroom Apartments

~75 sq.m + 13 - 25sq.m Covered Veranda

### 1 Bedroom Apartments

49.5 sq.m + ~11sq.m Covered Veranda

Floors

1-4

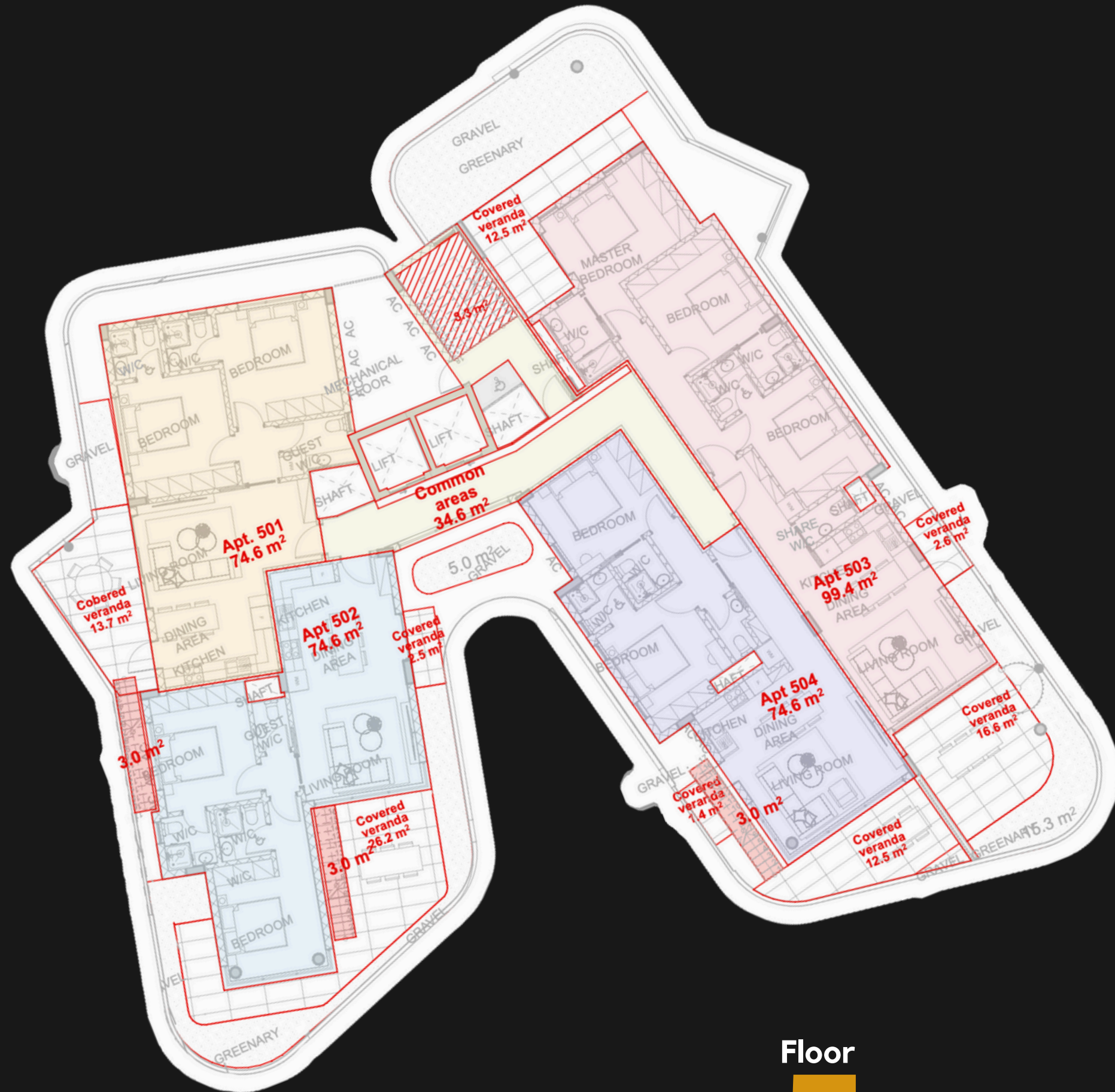
2 Bedroom Apartments

16

1 Bedroom Apartments

4





Floor  
**5**

# 5th Floor

## Landmark Project specs

Our new development project – “Landmark” of a complex of apartments with five floors and a total of 24 apartments.

### 2 Bed Room Apartments

74.6 sq.m + 13.9 - 26.2 sq.m Covered Veranda

### 1 Bedroom Apartment

99.4 sq.m + 31.7 sq.m Covered Veranda

2 Bedroom Apartments  
**3**

3 Bedroom Apartments  
**4**





# Roof Garden

**Innovating and inspiring consumers.**

We create a life-changing experience through the quality of our property and space. We provide a high level of living for all people throughout the world.







# Pricelist & Details

Landmark  
**8% Yearly** Investment return  
 per year **guaranteed**

FLOOR	FLAT	AREA	PRICE	BEDROOMS	BATHROOMS	COVERED VERANDAS	COMMON
1 FLOOR	101	74.6 sq.m	€225,000	2	3	13.7 sq.m	42.5sq.m
	102	74.6 sq.m	€240,000	2	3	31.0 sq.m	
	103	49.6 sq.m	€155,000	1	1	10.6 sq.m	
	104	74.6 sq.m	€235,000	2	3	18.1 sq.m	
	105	74.6 sq.m	€240,000	2	3	22.8 sq.m	
2 FLOOR	201	74.6 sq.m	€235,000	2	3	13.7 sq.m	42.5sq.m
	202	74.6 sq.m	€250,000	2	3	31.0 sq.m	
	203	49.6 sq.m	€160,000	1	1	10.6 sq.m	
	204	74.6 sq.m	€240,000	2	3	18.1 sq.m	
	205	74.6 sq.m	€250,000	2	3	22.8 sq.m	
3 FLOOR	301	74.6 sq.m	€250,000	2	3	13.7 sq.m	42.5sq.m
	302	74.6 sq.m	€270,000	2	3	31.0 sq.m	
	303	49.6 sq.m	€165,000	1	1	10.6 sq.m	
	304	74.6 sq.m	€250,000	2	3	18.1 sq.m	
	305	74.6 sq.m	€265,000	2	3	22.8 sq.m	
4 FLOOR	401	74.6 sq.m	€270,000	2	3	13.7 sq.m	42.5sq.m
	402	74.6 sq.m	€280,000	2	3	31.0 sq.m	
	403	49.6 sq.m	€168,000	1	1	10.6 sq.m	
	404	74.6 sq.m	€265,000	2	3	18.1 sq.m	
	405	74.6 sq.m	€280,000	2	3	22.8 sq.m	
5 FLOOR	501	74.6 sq.m	€400,000	2	3	13.7 sq.m	34.6 sq.m
	502	74.6 sq.m	€420,000	2	3	28.7 sq.m	
	503	98.5 sq.m	€420,000	3	4	31.7 sq.m	
	504	74.6 sq.m	€530,000	2	3	13.9 sq.m	



ROOF GARDEN	ROOF GARDEN STAIR	ROOF GARDEN ROOMS
57.7 sq.m	3.0 sq.m	13.5 sq.m
52.4 sq.m	3.0 sq.m	13.5 sq.m
100.9 sq.m	0 sq.m	13.5 sq.m
92.1 sq.m	3.0 sq.m	13.5 sq.m





# Contact us for More

**Questions? Comments? Concerns?**

Contact us to discuss any queries you may have.

**Phone**

+357 99 080 008

+357 24 656 006

**Email**

asofocleous@landmark.com.cy

**Online**

www.landmark.com.cy