



STRETCH SYEL
P R O P E R T I E S



CATALOGUE
2024

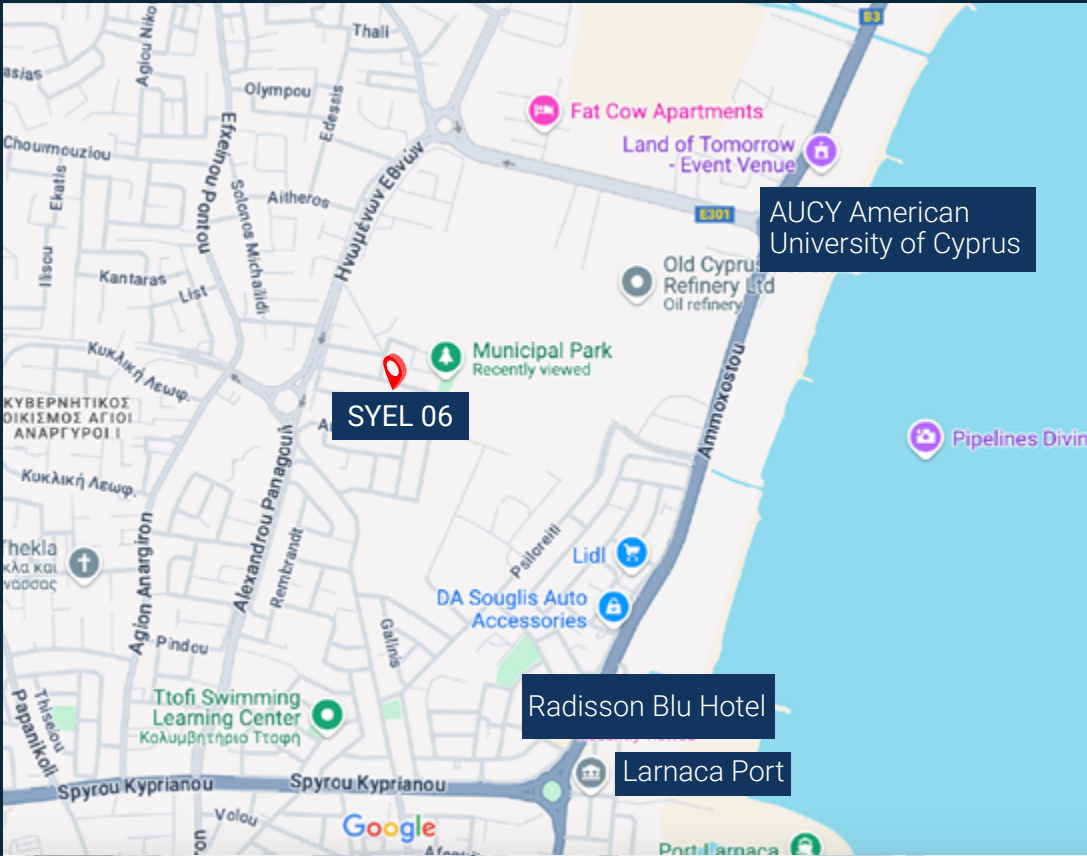
ABOUT US

Stretch Syel Properties is a dynamic real estate firm established by the strategic partnership of Stretch Properties and Blue Syel Properties. Our team of ambitious, driven professionals is dedicated to offering top-tier real estate opportunities to fulfill your investment objectives. Blue Syel's reputation and deep expertise align with our vision, empowering us to provide exceptional service and consistently exceed expectations. Together, we are committed to safeguarding your investment, anchored by a foundation of excellence, trust, and dedication.



OVERVIEW

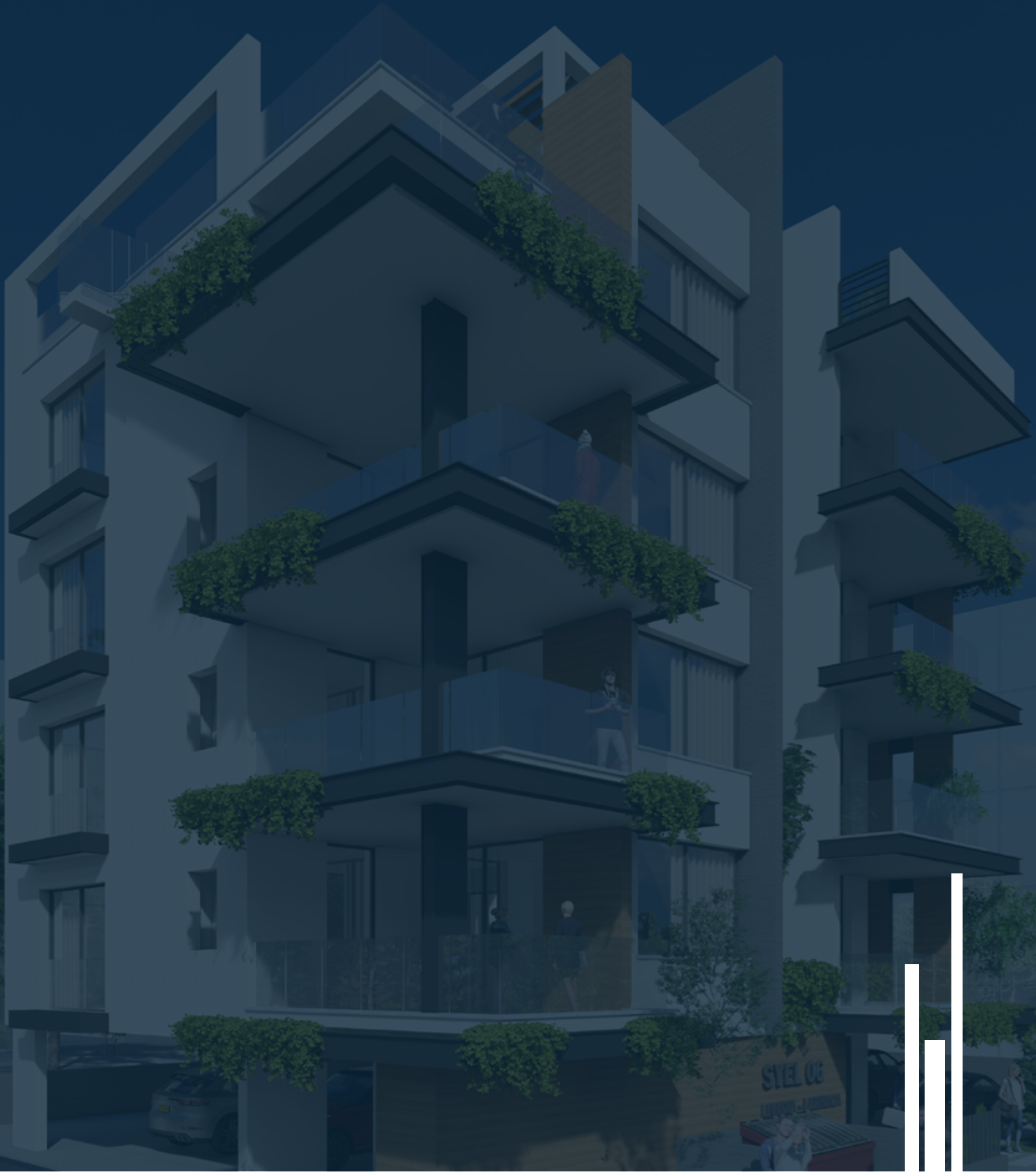
Residential Real Estate Market Overview in Cyprus



Cyprus’ residential real estate market presents a compelling opportunity for investors seeking a lucrative and stable investment. The market is experiencing a surge in growth, fueled by factors such as favorable tax incentives, a strategic location, and a high quality of life. This growth is reflected in rising property values, increasing transaction volumes, and a robust rental market that caters to both long-term residents and short-term tourists.

Key performance indicators paint a positive picture of the market’s sustained growth. The market’s value is projected to reach US\$91.79 billion by end of 2024, and it is expected to continue expanding with an annual growth rate (CAGR 2024-2029) of 4.15%, leading to a market volume of US\$112.50bn by 2029. This growth is driven not only by domestic demand but also by a significant influx of foreign investment, attracted by Cyprus’ political and economic stability, favorable tax regime, and high quality of life.

Beyond the financial benefits, Cyprus offers a desirable lifestyle. With its beautiful beaches, warm climate, and rich cultural heritage, the country provides a high-quality living environment that enhances the overall investment appeal. Larnaca, in particular, is gaining popularity as locals and foreigners relocate to live, work, and study, further expanding its rental market. With its growing appeal as a tourist destination, many investors are turning properties into holiday rentals and Airbnbs, creating ample opportunities for real estate investments that offer solid returns. As evidenced by PwC Cyprus’ report, the real estate sector plays a crucial role in the country’s economic transformation, attracting foreign investment and contributing to sustainable growth.

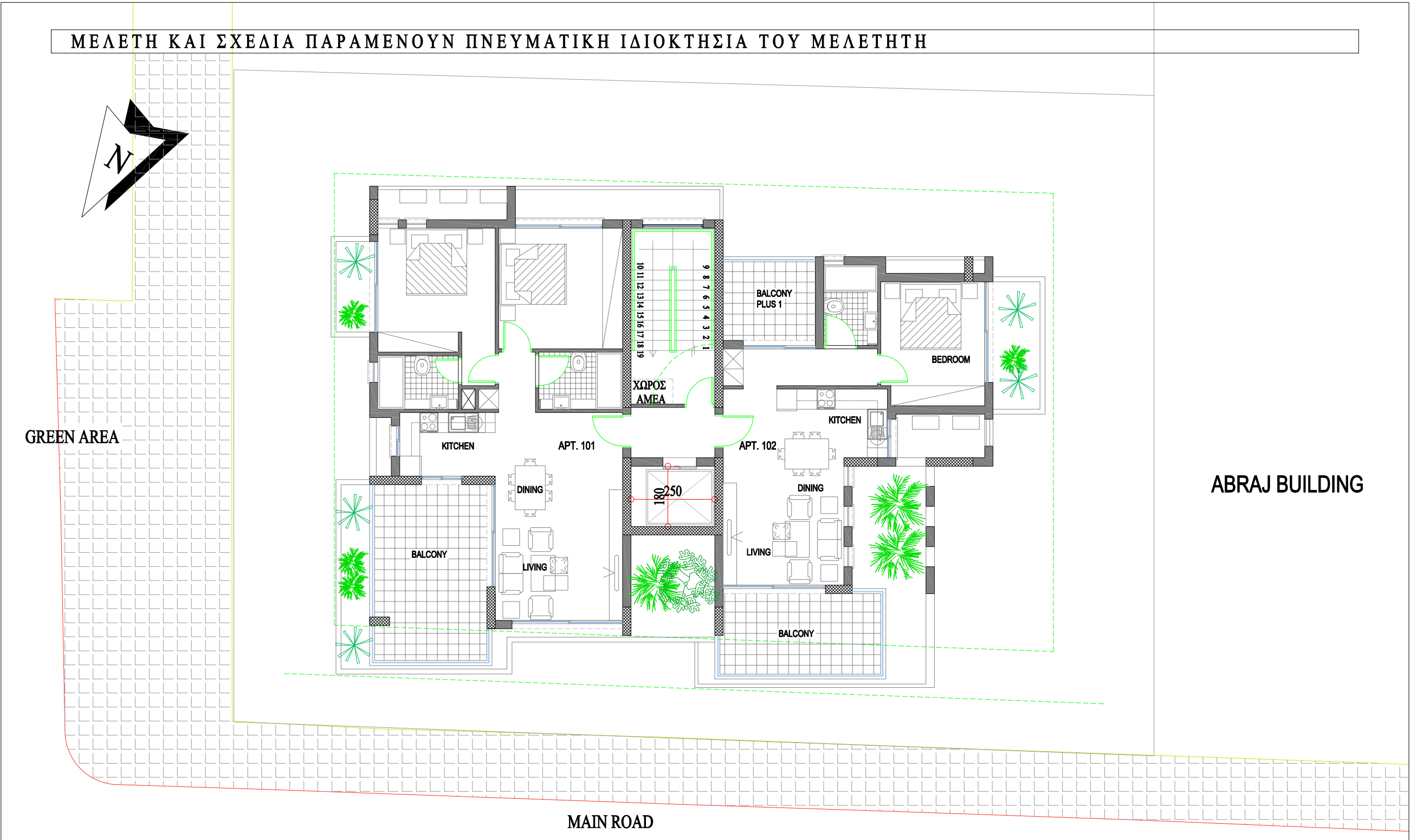


SUEL 6

This contemporary apartment building offers a stylish and comfortable living experience. Featuring clean lines, large windows, and spacious balconies, each unit provides ample natural light and stunning views. The building's modern design and high-quality finishes create a sophisticated and inviting atmosphere for anyone looking to enjoy urban living. With a range of amenities, a rooftop lounge, and secure parking, it offers the perfect blend of convenience and aesthetic for residents seeking a vibrant, modern lifestyle in the heart of the charming city of Larnaca.



SYEL 6



Apartment Number: 101

Space: 109.88 sqm



Bed: 2 | Bath: 2 | Living: 1 | Dining: 1 | Kitchen: 1 | Balcony: 1 | Price: € 225,000

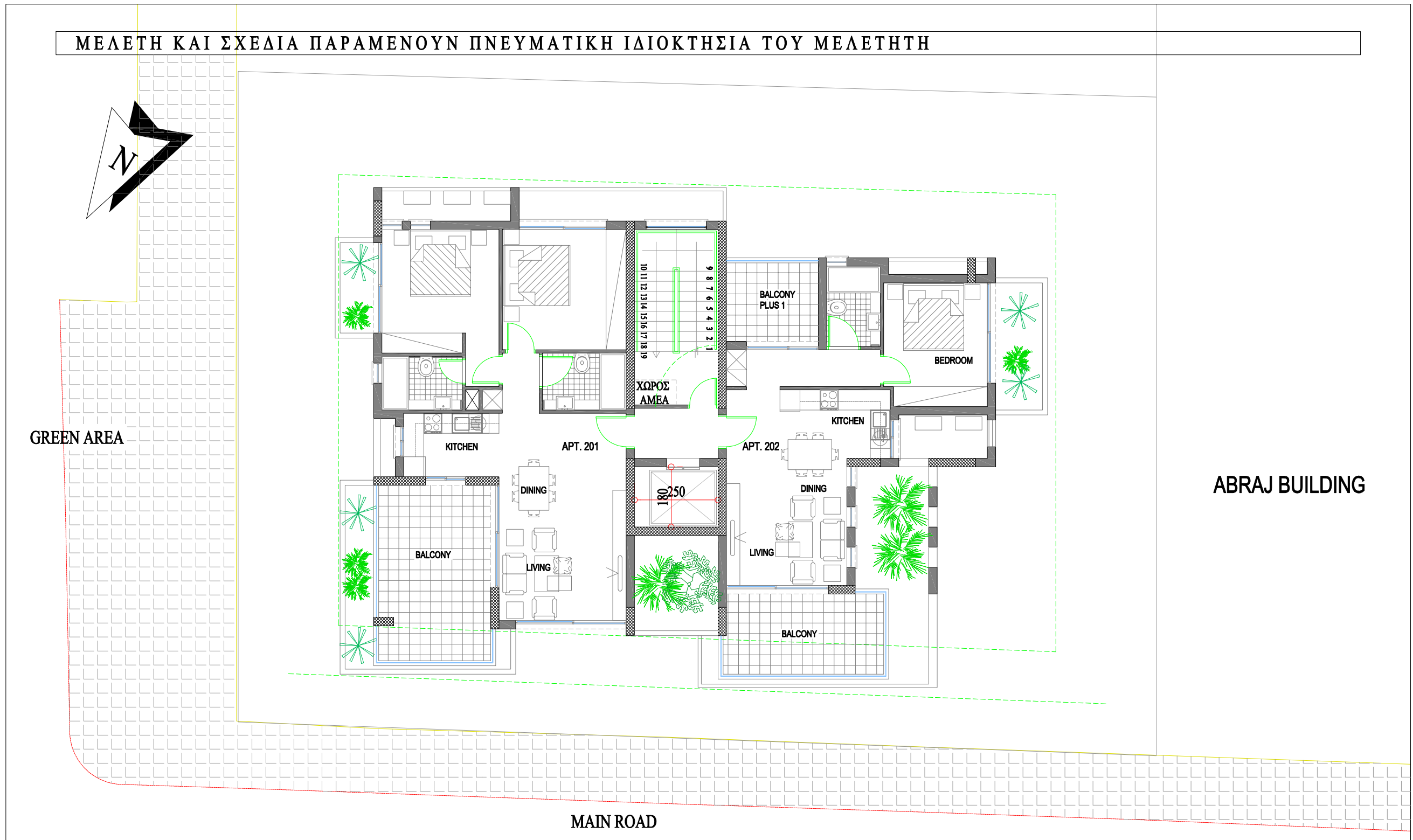
Apartment Number: 102

Space: 85.38 sqm



Bed: 1 | Bath: 1 | Living: 1 | Dining: 1 | Kitchen: 1 | Balcony: 2 | Price: € 168,000

SYEL 6



Apartment Number: 201

Space: 109.888 sqm



Bed: 2 | Bath: 2 | Living: 1 | Dining: 1 | Kitchen: 1 | Balcony: 1 | Price: € 237,000

Apartment Number: 202

Space: 85.38 sqm



Bed: 1 | Bath: 1 | Living: 1 | Dining: 1 | Kitchen: 1 | Balcony: 2 | Price: € 176,000

Early bird discounts available
Save up and secure your investment today

SVEL 6

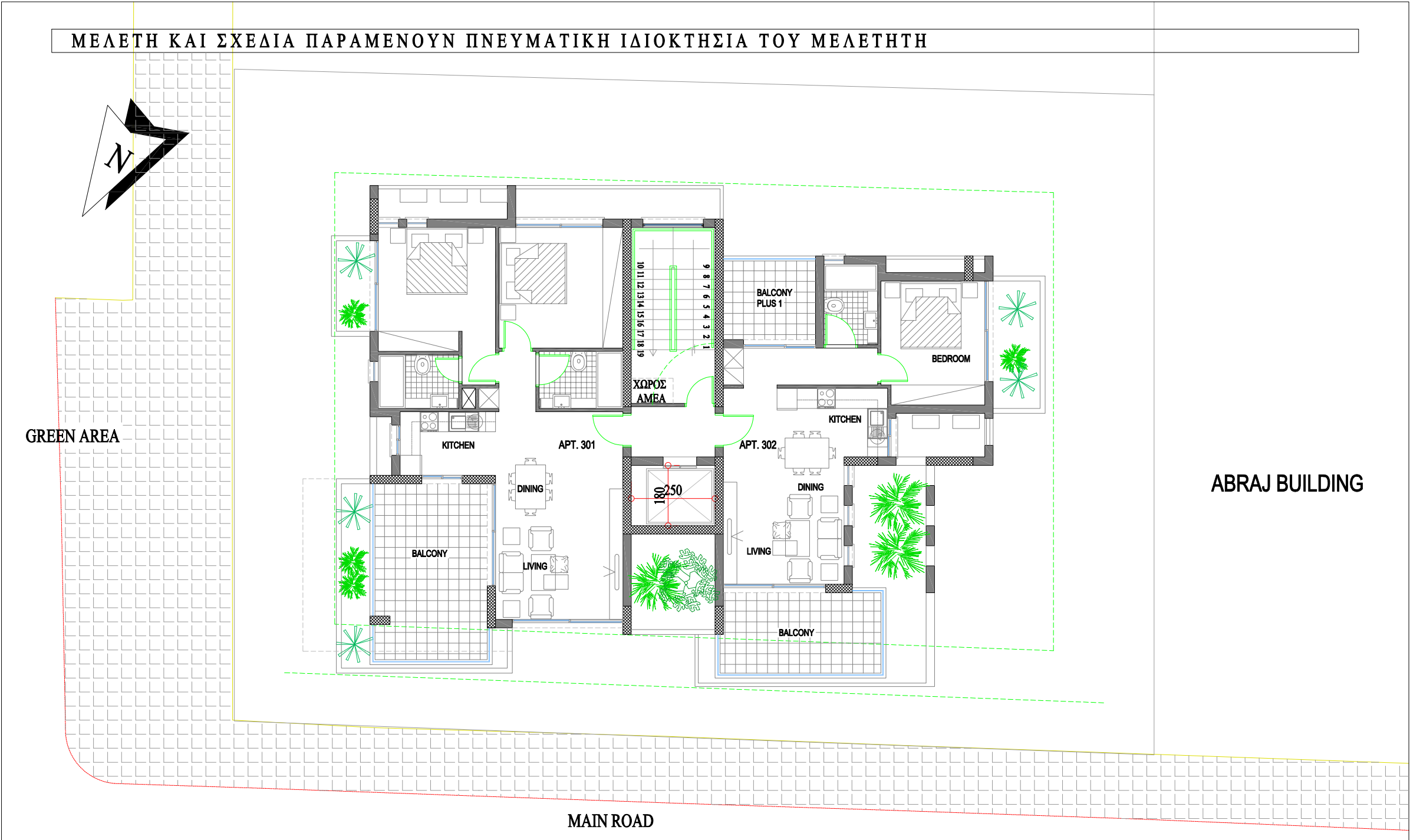


Apartment Number: 302 Space: 85.38 sqm

Bed: 1 | Bath: 1 | Living: 1 | Dining: 1 | Kitchen: 1 | Balcony: 2 | Price: € 184,000

Apartment Number: 301 Space: 105.88 sqm

Bed: 2 | Bath: 2 | Living: 1 | Dining: 1 | Kitchen: 1 | Balcony: 1 | Price: € 248,000



SUEL 6

Apartment Number: 401

Space: 106.88 sqm

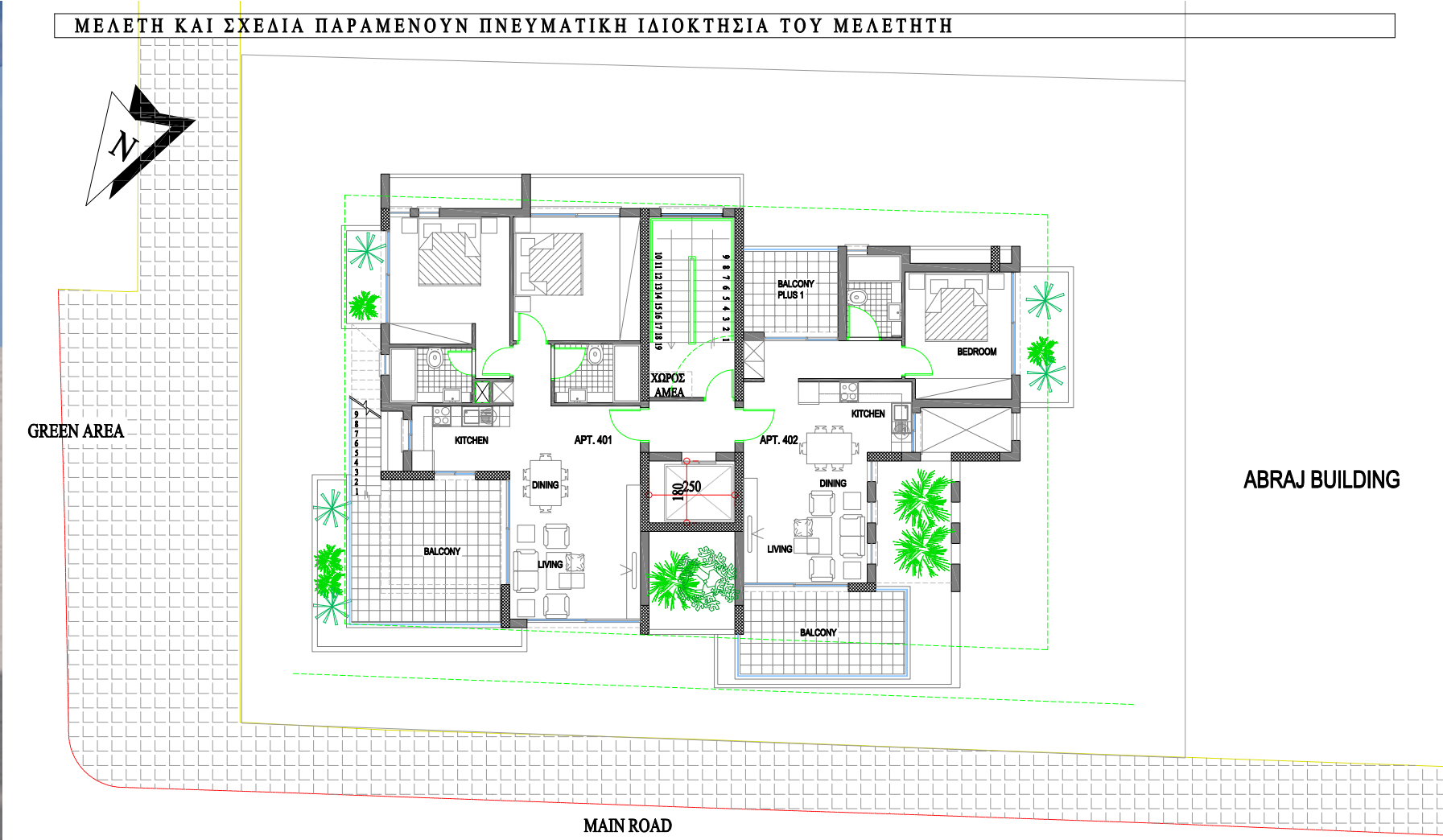
Bed: 2 | Bath: 2 | Living: 1 | Dining: 1 | Kitchen: 1 | Balcony: 1 | Price: € 361,000



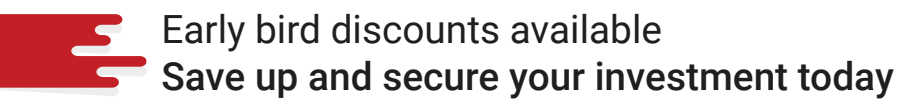
Apartment Number: 402

Space: 77.88 sqm

Bed: 1 | Bath: 1 | Living: 1 | Dining: 1 | Kitchen: 1 | Balcony: 2 | Price: € 195,000



ROOF GARDEN FLOOR PLAN



Stretch Syel Properties

PLOTS 371 PLOT LIVADIA LARNACA

apt. no.	1B	2B	Internal area	Balcony	Terrace	Roof Garden	Circulation	Cave	Total	Final price
			M2	M2	M2	M2	M2	M2		
Building										
101		✓	77.5	19.00			13.38	2	109.88	€ 225,000
102	✓		52.5	19.50			13.38	2	85.38	€ 168,000
201		✓	77.5	19.00			13.38	2	109.88	€ 237,000
202	✓		52.5	19.50			13.38	2	85.38	€ 176,000
301		✓	77.5	15.00	4		13.38	2	105.88	€ 248,000
302	✓		52.5	19.50			13.38	2	85.38	€ 184,000
401		✓	82	11.50	7.5	80	13.38	2	96	€ 361,000
402	✓		52.5	12.00	7.5		13.38	2	77.88	€ 195,000


*all prices exclude VAT



Your gateway to profitable real estate opportunities

Stretch Syel Properties

 Syel 06

 +961 3051195

