

A project by

interliving



IONIC

MADE
FOR
LIVING

MADE FOR LIVING

We are a Cyprus-based boutique company aiming to design and develop properties that surpass expectations with the sole purpose of giving people the choice of better living and better investment.



WHAT INSPIRES US

A home is more than just an investment, it is a long-lasting connection to a community offering a sense of place.

We draw inspiration from this maxim to bring together knowledge and craftsmanship to design, develop and build a contemporary, sustainable living through innovation in materials and construction methods.

Simply put, we are building
a futureproof way of living!





WE'RE BUILDING

A FUTUREPROOF WAY OF LIVING

We are meticulous, we do our research, and we exhaust the options.
We choose our partners wisely and we create spaces where each detail has been accounted for
resulting in a successful, perfectly balanced amalgamation of aesthetics and functionality.

These are the Interliving properties.

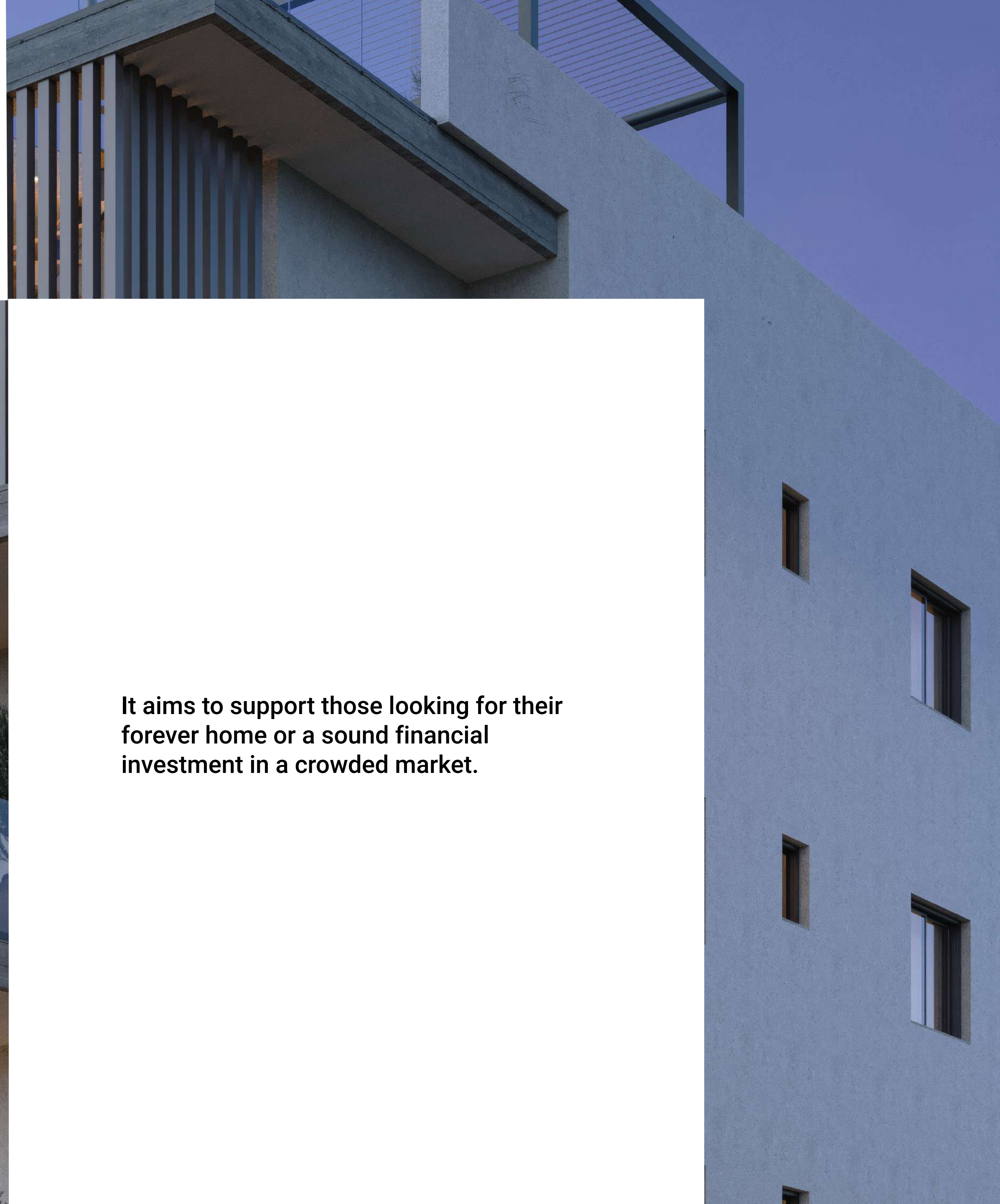
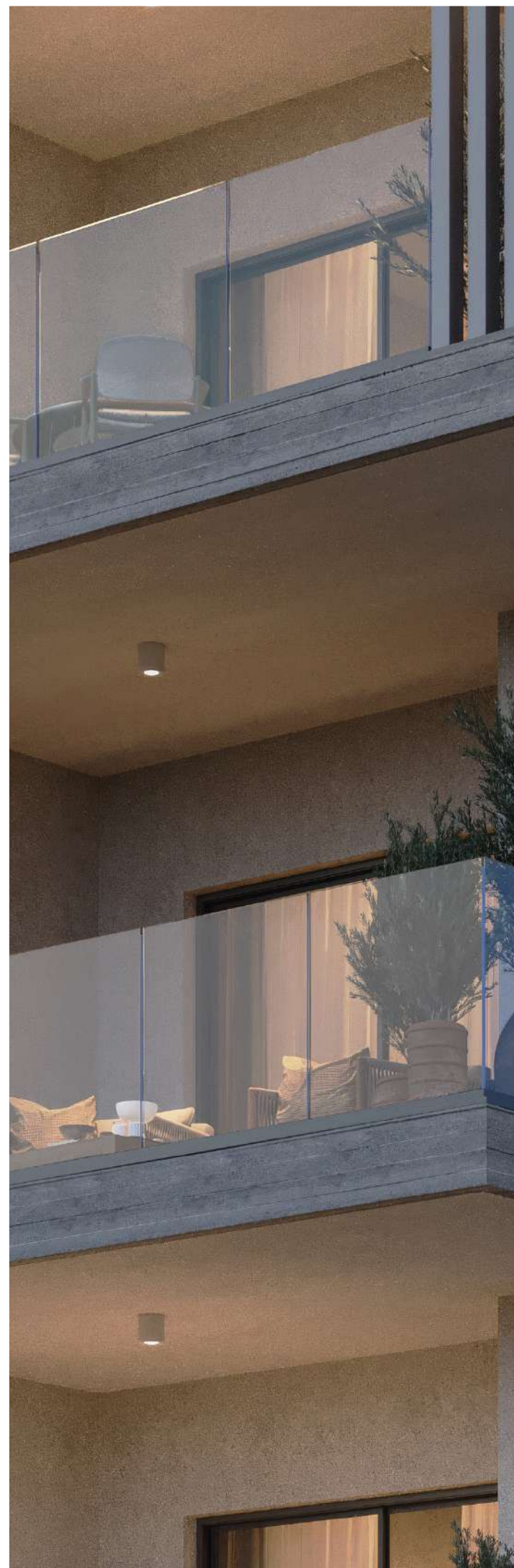


WHO WE ARE

Interliving was founded as an alternative to the rigid and inflexible property development industry in Cyprus.

With international experience and a background in property management, development, finance, and sales, Interliving has set out to offer a better experience.

It aims to support those looking for their forever home or a sound financial investment in a crowded market.





LARNACA

The coastal city of Larnaca is one of the world's 20 most ancient continuously inhabited areas. It is the gateway to Cyprus and a blend of old and new.

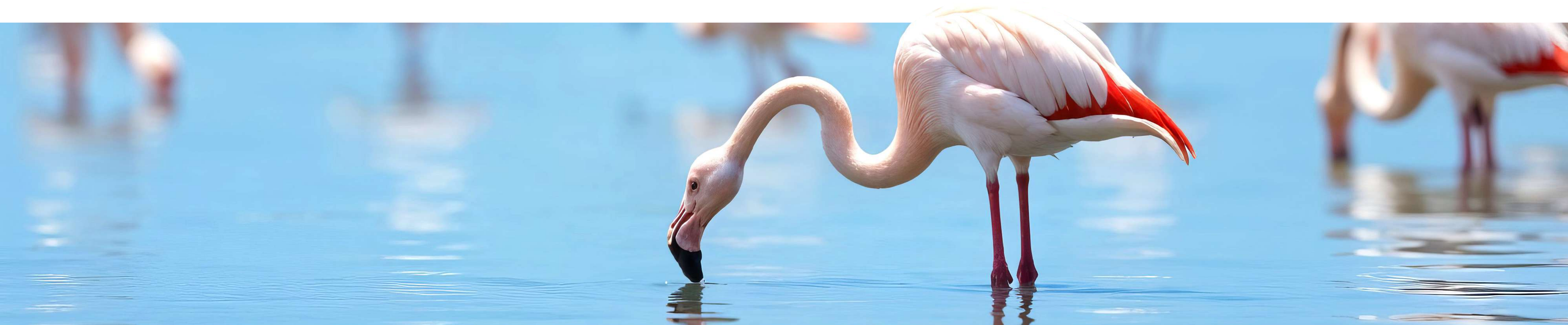
From its traditional architecture, authentic taverns and local handicrafts to its cultural sites and religious monuments, old Larnaca is an evocative glimpse into a Cyprus past.

New and modern Larnaca harmoniously intertwines with these elements of ancient Kition, and offers the cosmopolitan visitor beautiful sandy beaches, a bustling promenade, shopping, advanced infrastructure and plenty of amenities.



With almost guaranteed sunshine every day, Larnaca is an exciting all year-round destination which offers cultural events, numerous attractions, activities and leisure options at close proximity.

Larnaca is a place where “They Always Come Back”, not only because its favourite winter guests, the flamingos, which they visit the area's lakes in flocks each year, but also the visitors of Larnaca who keep returning year after year.



IONIC

A collection of 8 contemporary two-bedroom apartments perfectly designed for modern city living.

Located in a prime location, with easy access to the blue flag beaches, shopping, dining and entertainment, IONIC is the perfect place to call home for those seeking the ultimate in quality and convenience.

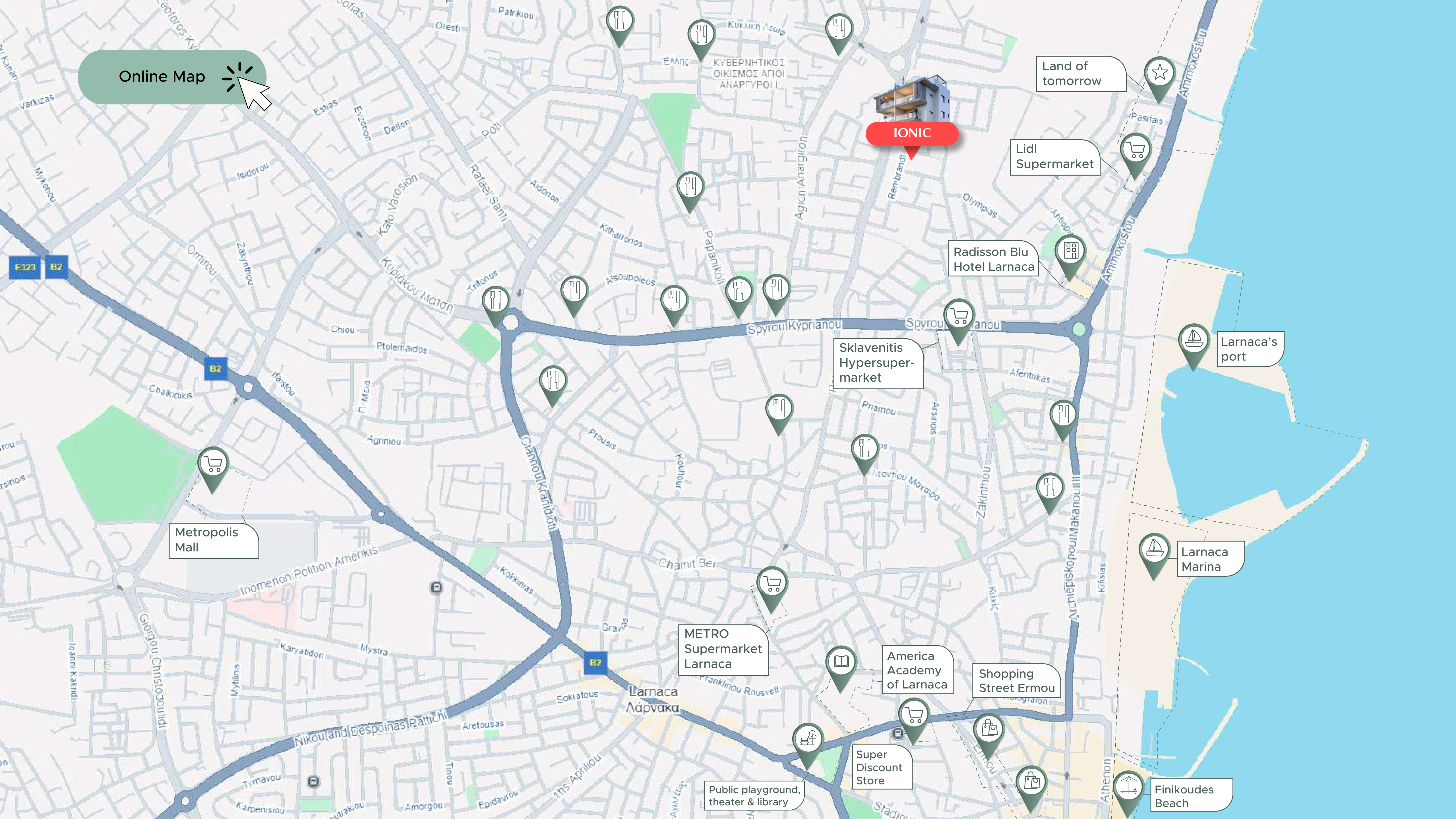


DEVELOPMENT HIGHLIGHTS

- Reception area with marble finishing
- High-quality European ceramic flooring
- Thermal aluminium window frames with double-glazing
- High-quality European ceramic tiles in bathrooms' walls
- Security entrance doors and an intercom system
- High-standard sanitary ware from top European brands
- High-standard kitchen cabinets and wardrobes
- Choice of upgrades offered to the buyers
- Common areas to benefit from a photovoltaic system
- Penthouses will benefit from a 2KW photovoltaic system.



Online Map



THE DETAILS ARE NOT THE DETAILS.

All the apartments have ample, comfortable interior spaces and spacious balconies.

European ceramic tiles in bathrooms and living areas, high-end kitchen cabinets and wardrobes are part of the extensive list of features the development offers.



THEY MAKE THE DESIGN.







interliving









interliving



interliving



PRICELIST

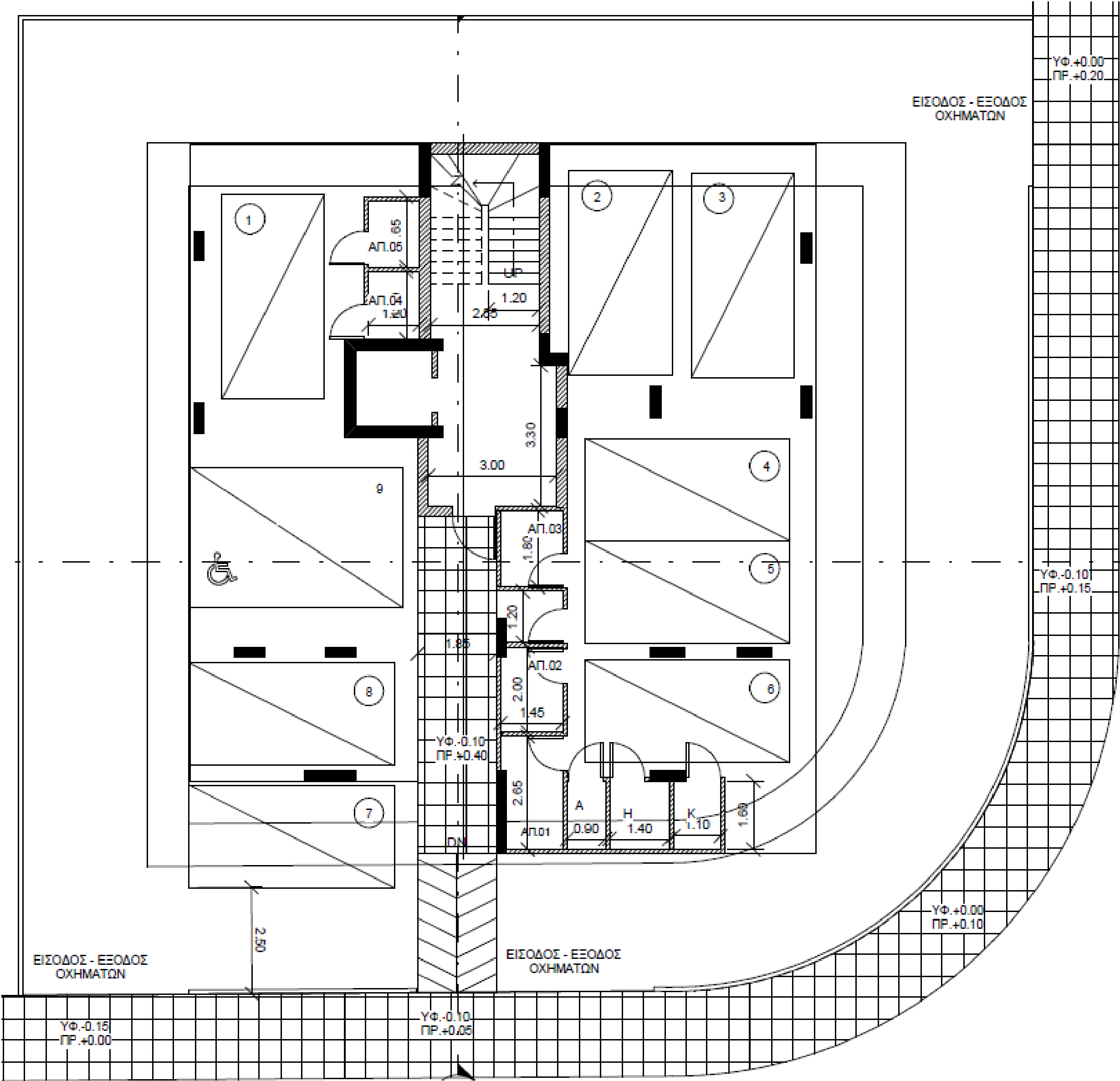
IONIC

UNIT	FLOOR	TYPE	INTERNAL SQM	COVERED VERANDAS SQM	TOTAL COVERED SQM	ROOF TERRACE SQM	STORE ROOMS	PARKING	SOLAR PANELS* KW
101	FIRST	2 BED	76	21	98	-	1	1	-
102	FIRST	2 BED	76	25	101	-	1	1	-
201	SECOND	2 BED	76	18	94	-	1	1	-
202	SECOND	2 BED	76	23	99	-	1	1	-
301	THIRD	2 BED	76	18	94	-	1	1	-
302	THIRD	2 BED	76	23	99	-	1	2	-
401	FORTH	2 BED	76	21	97	62	1	1	2.00
402	FORTH	2 BED	76	25	101	62	1	1	2.00

*These are estimates and subject to change based on the engineer's final study.

FLOORPLANS

GROUND FLOOR



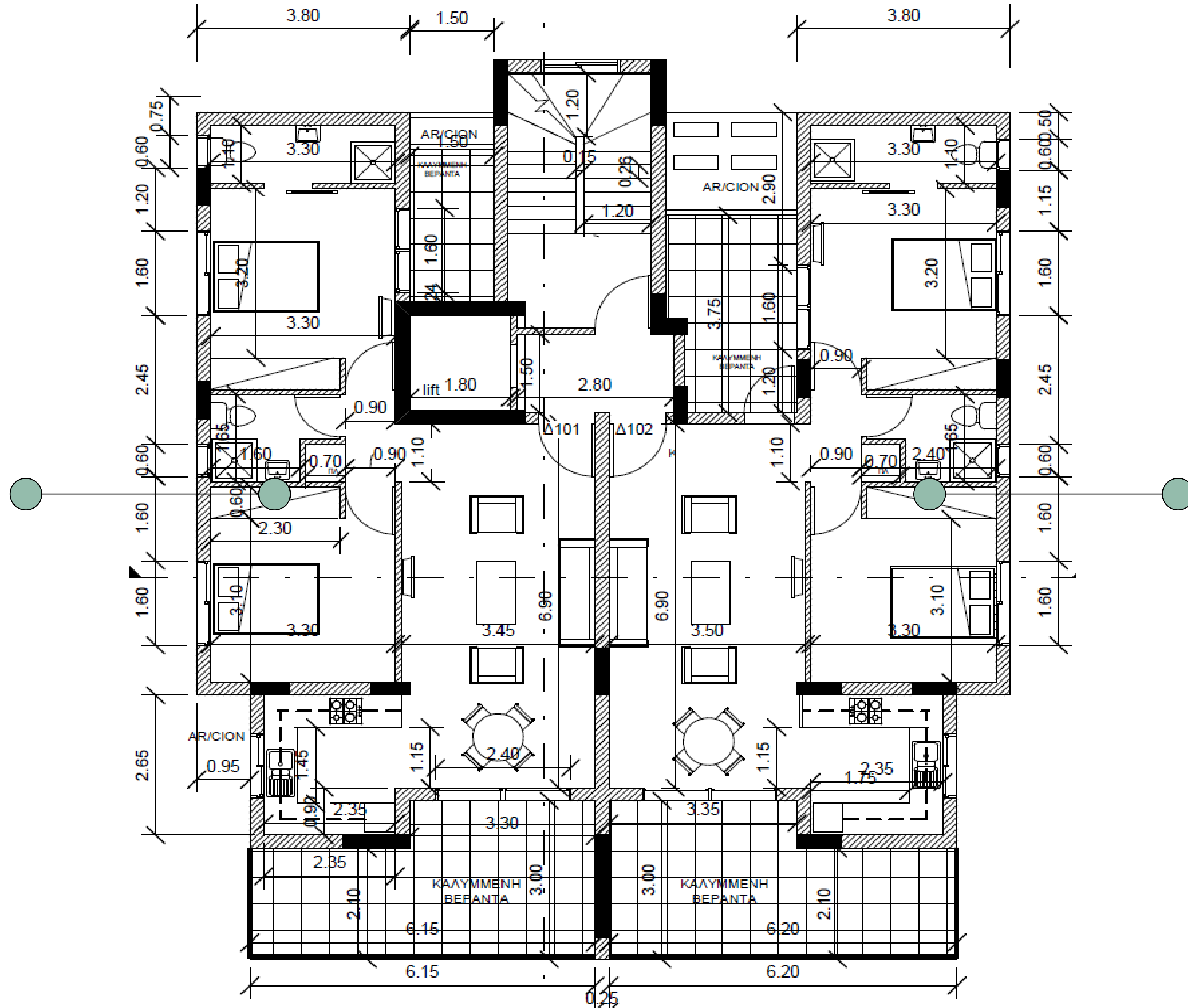
FLOORPLANS

FIRST FLOOR



Unit 101
2 BED

Internal: 76 sqm
Covered ver.: 21 sqm
Total covered: 97 sqm



Unit 102
2 BED

Internal: 76 sqm
Covered ver.: 25 sqm
Total covered: 101 sqm

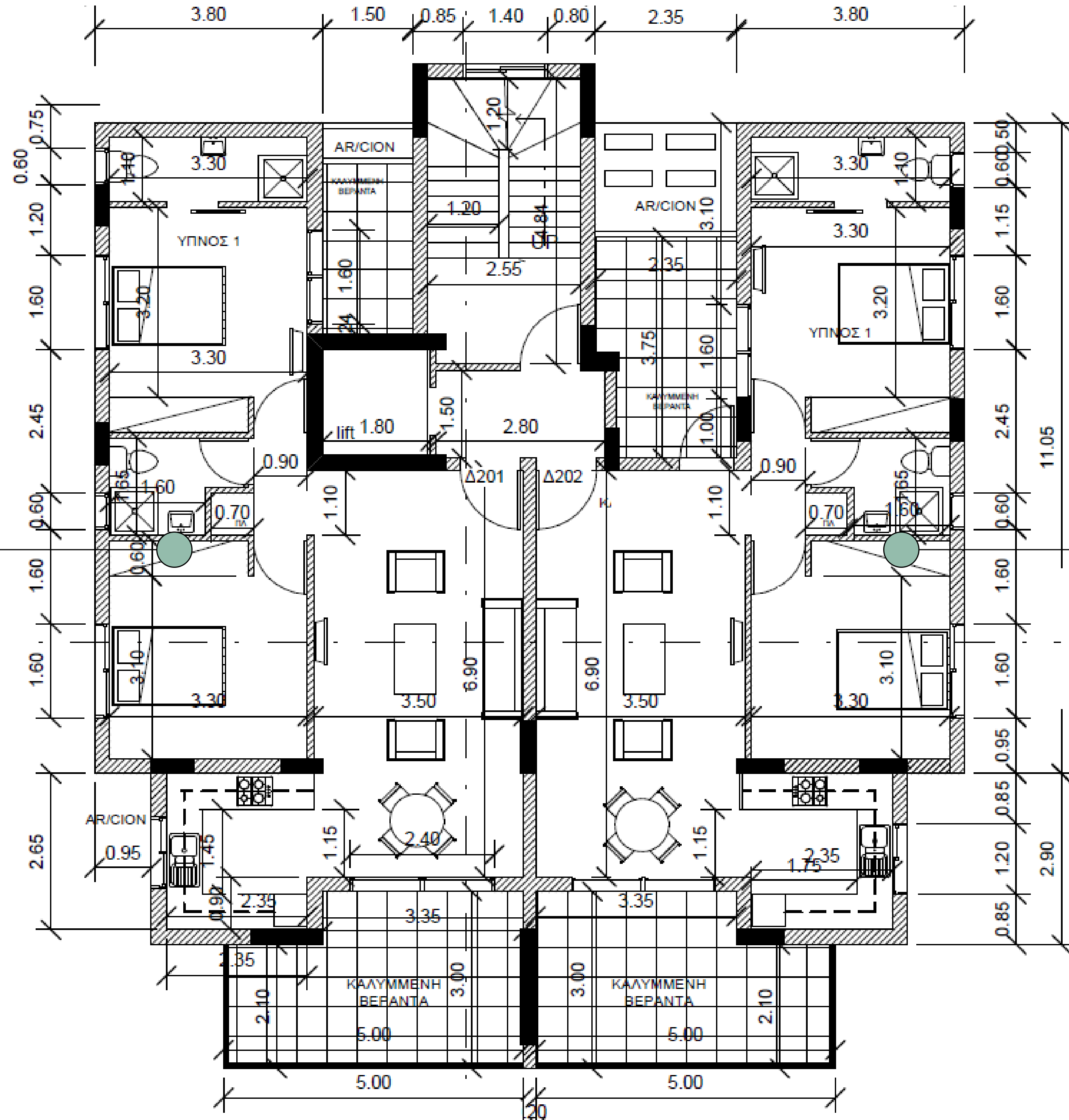
FLOORPLANS

SECOND FLOOR



Unit 201
2 BED

Internal: 76 sqm
Covered ver.: 18 sqm
Total covered: 94 sqm



Unit 202
2 BED

Internal: 76 sqm
Covered ver.: 23 sqm
Total covered: 99 sqm

THIRD FLOOR



Internal: 76 sqm
Covered ver.: 18 sqm
Total covered: 94 sqm

Unit 302
2 BED
Internal: 76 sqm
Covered ver.: 23 sqm
Total covered: 99 sqm

FLOORPLANS

FORTH FLOOR



Unit 401

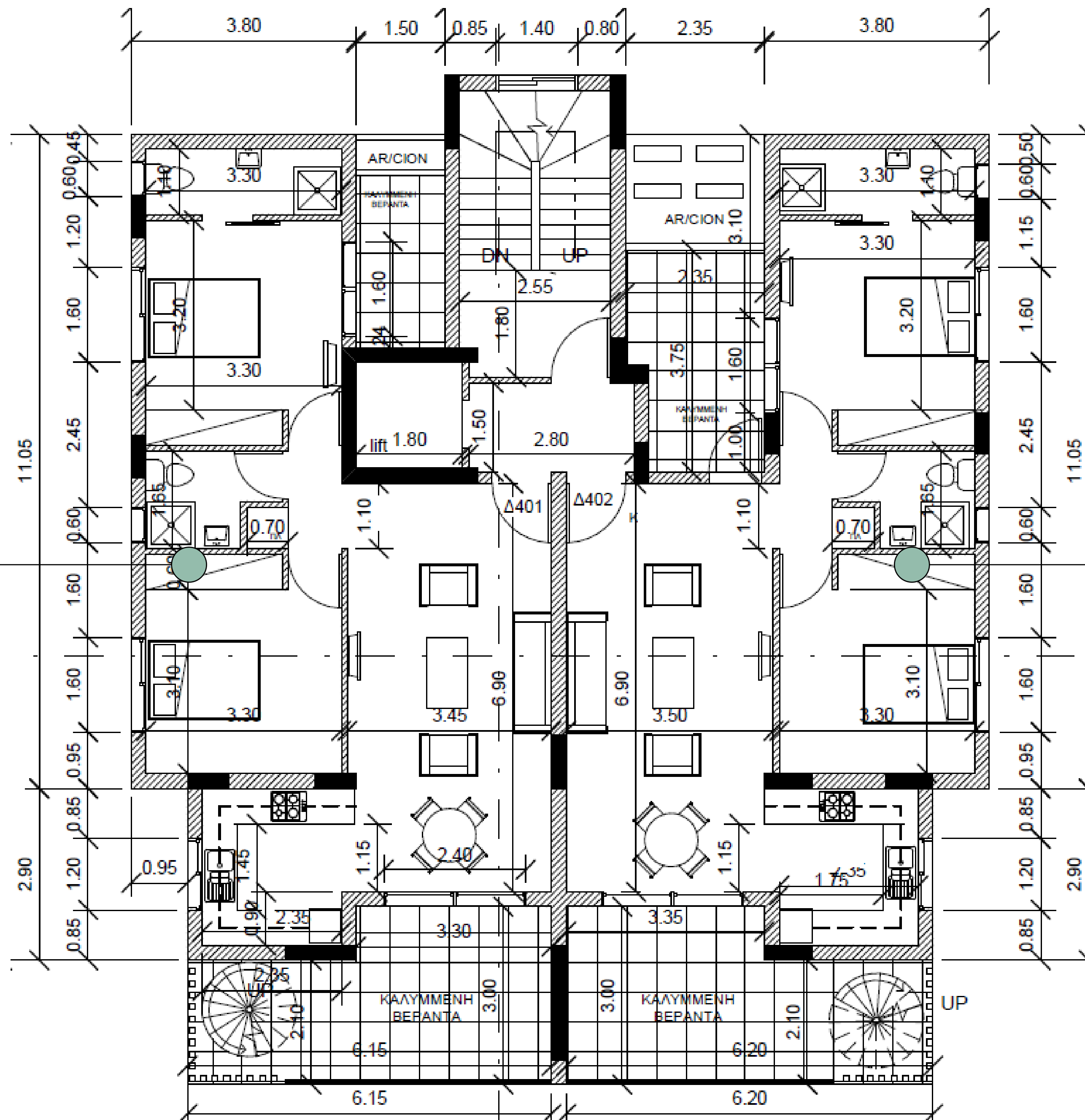
2 BED

Internal: 76 sqm

Covered ver.: 21 sqm

Total covered: 97 sqm

Roof terrace: 62 sqm



Unit 402

2 BED

Internal: 76 sqm

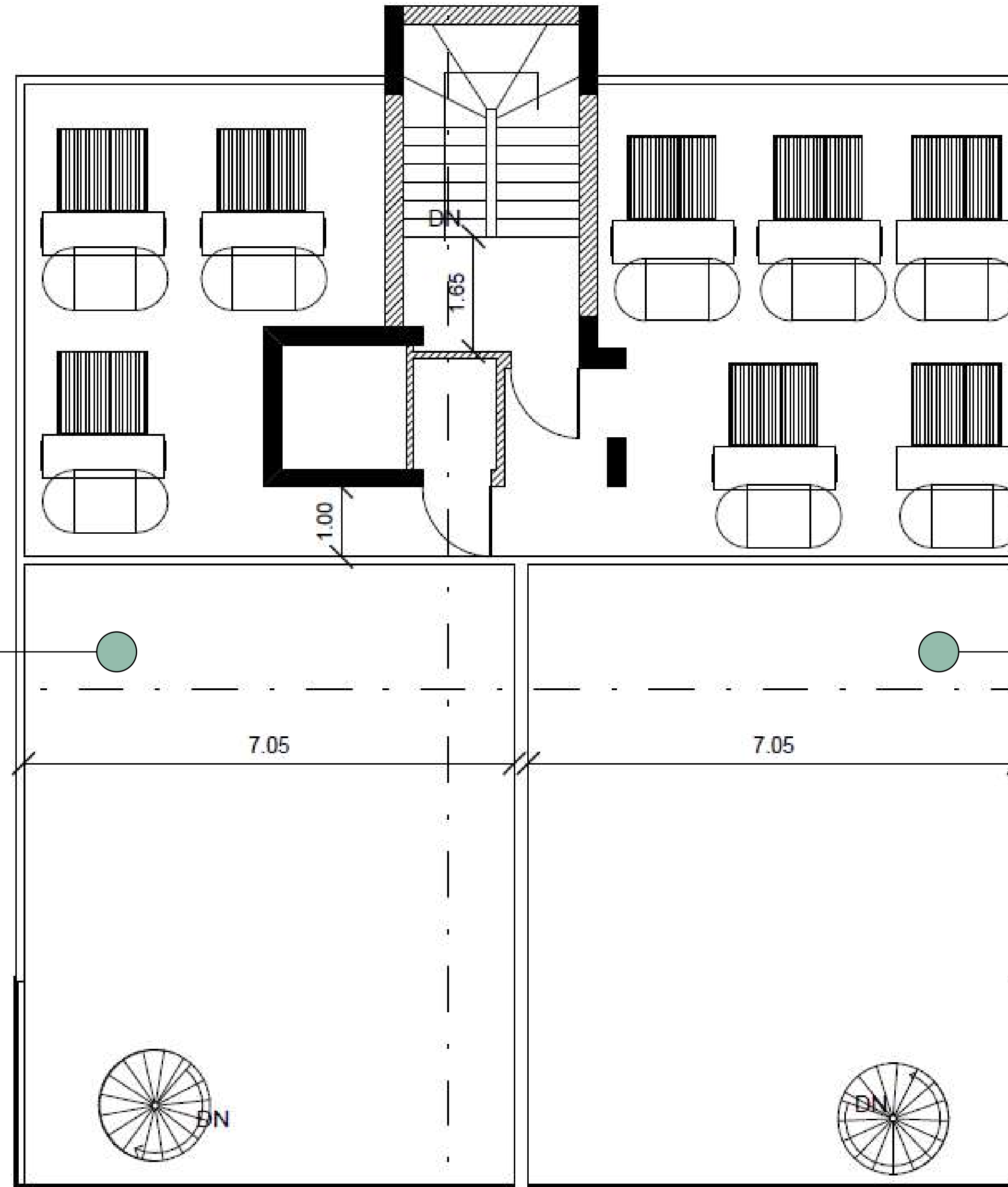
Covered ver.: 25 sqm

Total covered: 101 sqm

Roof terrace: 62 sqm

FLOORPLANS

FIFTH FLOOR



Unit 401
2 BED

Internal: 76 sqm
Covered ver.: 21 sqm
Total covered: 97 sqm
Roof terrace: 62 sqm

Unit 402
2 BED

Internal: 76 sqm
Covered ver.: 25 sqm
Total covered: 101 sqm
Roof terrace: 62 sqm

interliving

Piliou Street 11-13
7th floor, office 701
Larnaca 6037, Cyprus

+357 70009080
sales@interliving.com
interlivinggroup.com



THANK
YOU