



626 Lemaco

new residential project
Larnaca



Location

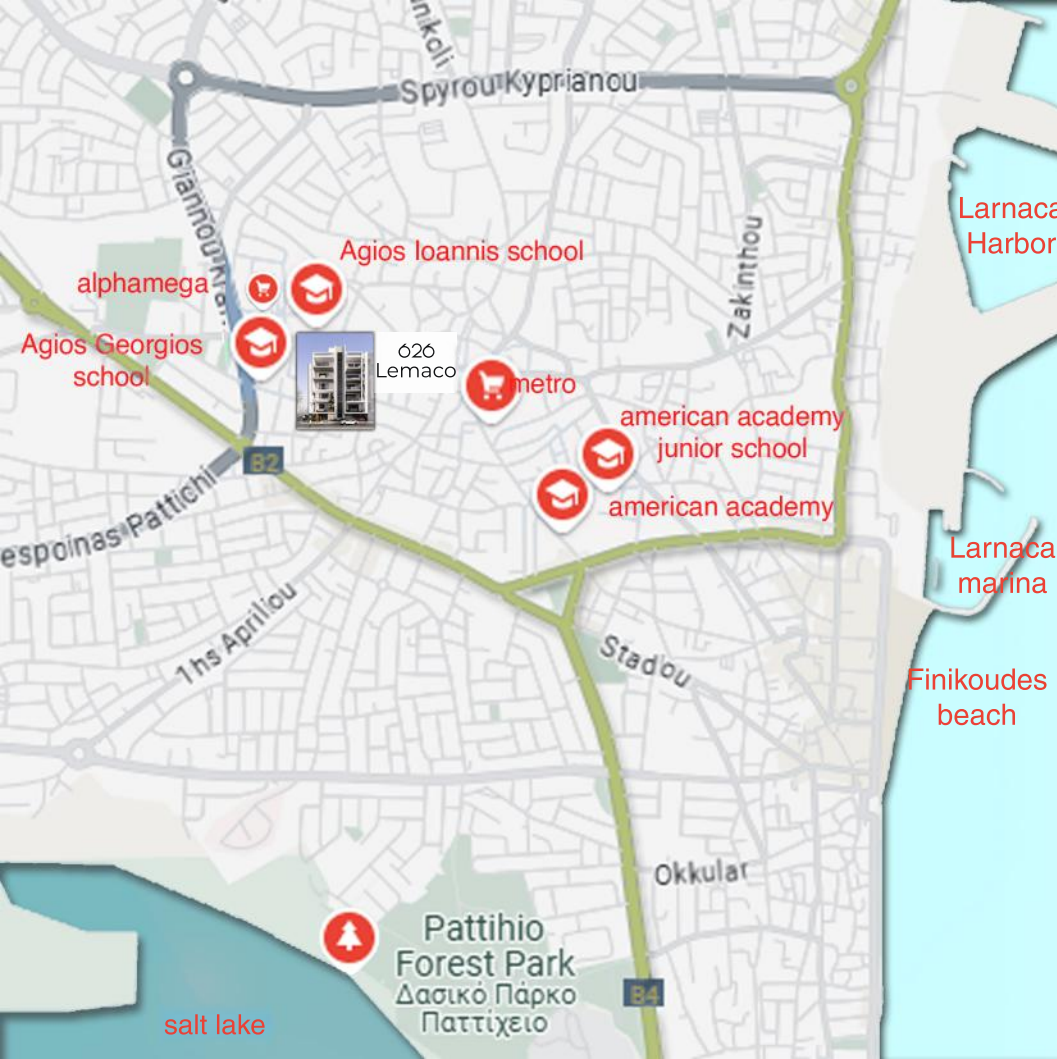
Conveniently located in the heart of Larnaca at the intersection of 2 streets, allowing natural light and sense of openness in our exquisite apartments

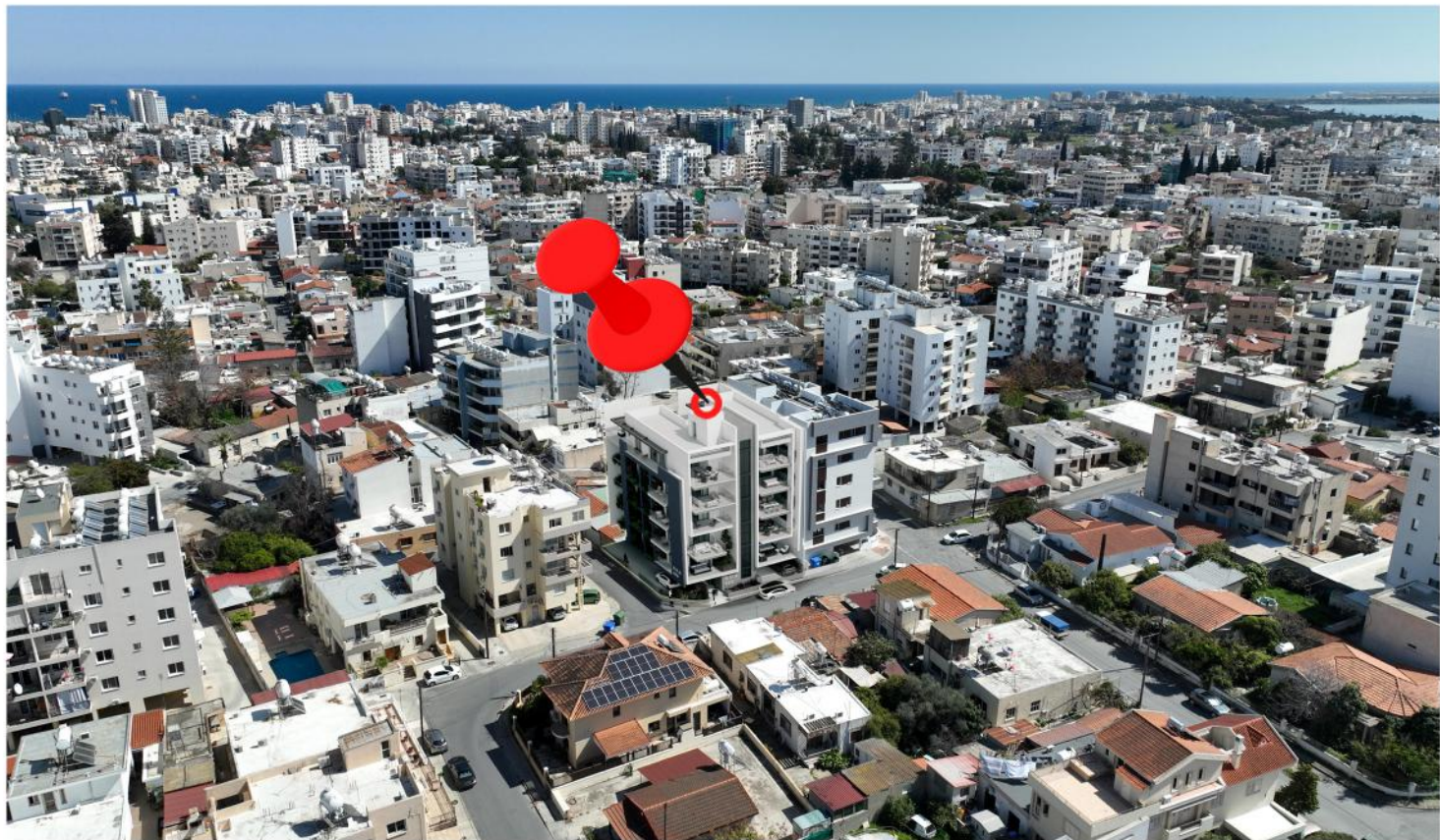
Effortless connectivity

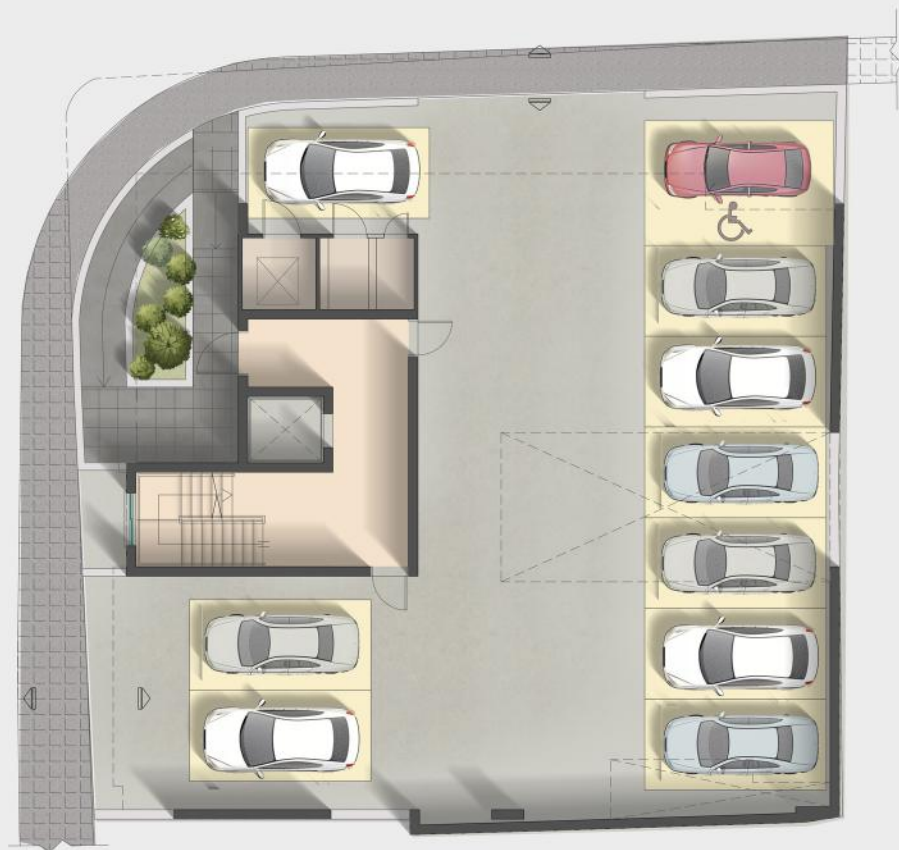
- only 500 meters from Larnaca major highway, ensuring easy connectivity to all Cyprus major cities
- Just a 10-min drive from Larnaca Airport making it ideal for travelers and commuters

Nearby amenities

- Schools within walking distance
- 1min drive to Metro Mall
- 3min quick access to Ermou Square
- 4min drive to beautiful Finikoudes beaches
- 6min drive to the vibrant Larnaca Marina







Ground floor

Gated parking
parking spaces 10
1 parking spot per apartment

Green welcoming entrance

626

Welcome to Lemaco our new project in Larnaca , offering **eight** spacious two-bedroom / two-bathroom apartment along with **one** exquisite three-bedroom penthouse on the 5th floor

Each apartment is well-conceived with an open-plan kitchen, generous living space and large sunlit veranda
The penthouse boasts wrap-around verandas, offering exceptional outdoor space

Residents will benefit from gated parking and private storage for each apartment





Typical floor

two-bedroom apartment
 covered area 84/85 m²
 covered balcony 17/24m²
 1 storage
 1 parking



Disclaimer : Rendered image are for inspiration purposes only



5th floor

three-bedroom apartment
 covered area 127.5m²
 covered balcony 58m²
 uncovered terraces 41m²
 1 storage
 1 parking



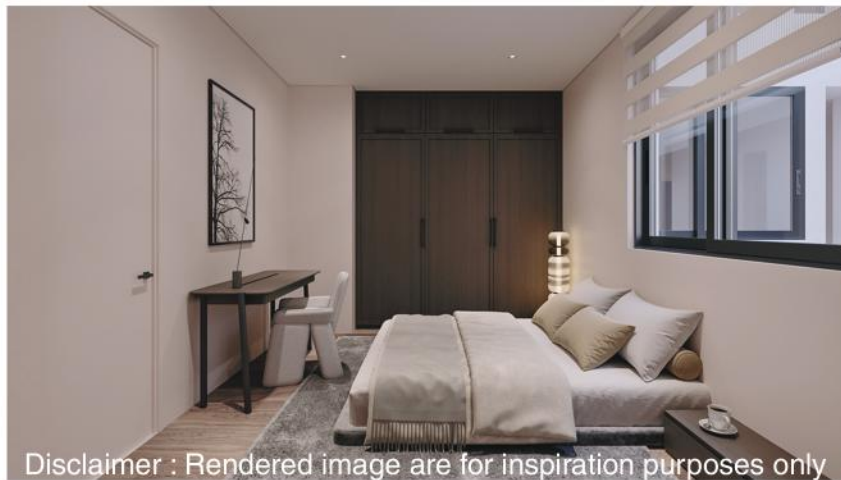
Disclaimer : Rendered image are for inspiration purposes only

626 Lemaco

Apartment	Floor	Type	Indoor Area	Covered Balcony	Terrace	Storage	Total area	Common Area	Parking
#	#	#bedroom	m2	m2	m2	m2	m2	m2	#
101	1st	2	85	24		2.5	111.5	14	1
102	1st	2	84	24.5	2	2.5	113	14	1
201	2nd	2	85	19		2.5	106.5	14	1
202	2nd	2	84	17.5	2.5	2.5	106.5	14	1
301	3rd	2	85	24		2.5	111.5	14	1
302	3rd	2	84	17.5		2.5	104	14	1
401	4th	2	85	22		2.5	109.5	14	1
402	4th	2	84	17.5		2.5	104	14	1
501	5th	3	127.5	58	41	2.5	229	14	1

Disclaimer

The calculations and prices provided in this brochure are estimates only and are subject to change.
 These descriptions are for informational purposes and do not constitute any part of an offer or contract.
 All information is provided in good faith and is believed to be accurate at the time of publication.
 For the most current information, please contact us or visit our website.



Disclaimer : Rendered image are for inspiration purposes only



Lemaco Inetrnational Ltd

GET IN TOUCH

OFFICE BEIRUT : +9613896396 / OFFICE CYPRUS : +35796070707 / +357796999888