

# CITY PALM RESIDENCES





# About

---

The cornerstone of our mission is honesty, reliability, and professionalism.

We design and create luxurious quality properties delivered by qualified and experienced professionals.

CITY PALM RESIDENCES represents a distinguished project of luxurious apartments located in the convenient and calm area in Limassol city center. It offers a "time sense of place" with comfortable and luxurious living.









# CITY PALM RESIDENCES

First and Second Floor



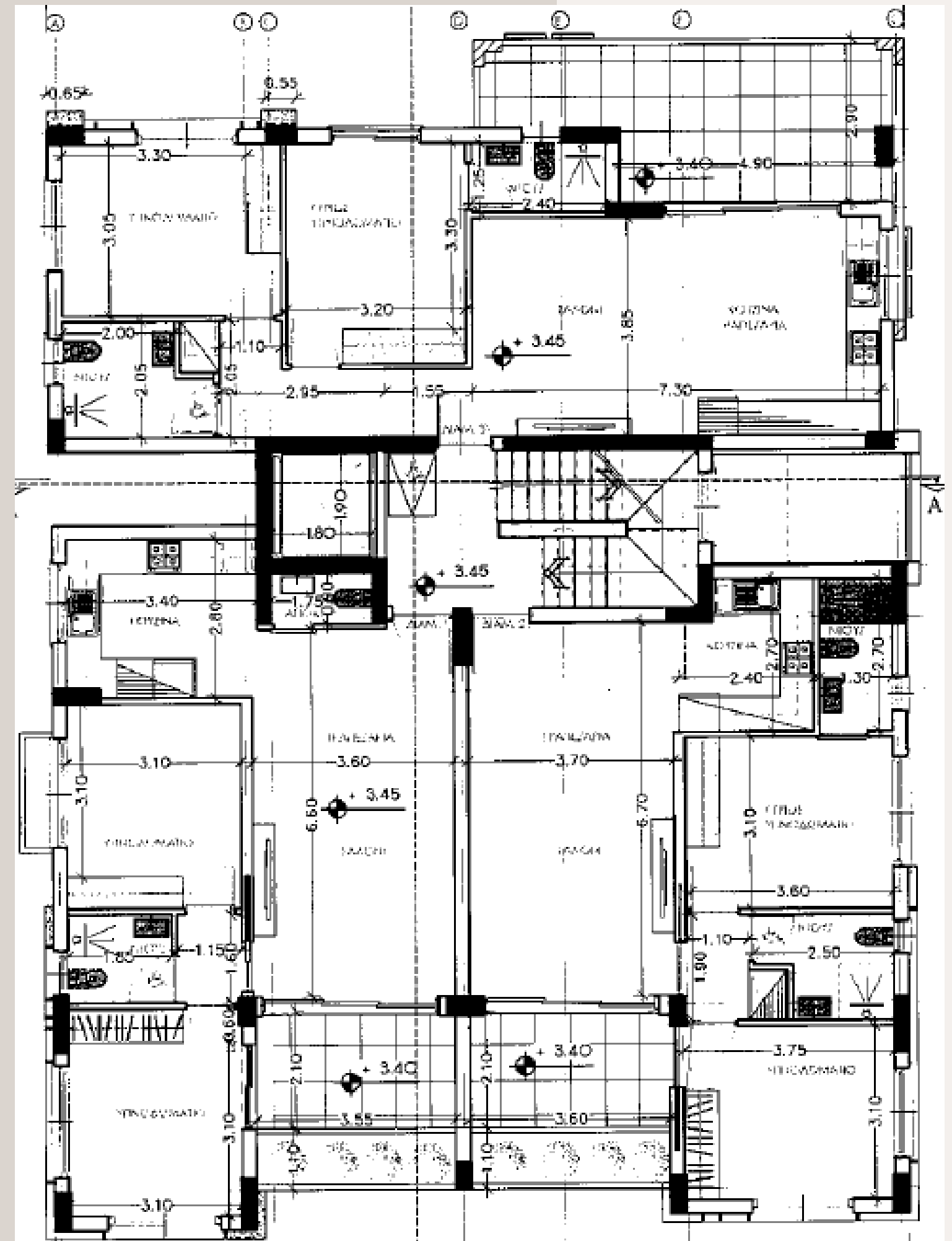
## Apartment Features

*This family apartment has various facilities suitable for a family with an Eco-green environment and provides its residents with an unparalleled living experience.*

- 2 Bedrooms
- Electric shutters
- Spacious kitchen and living room



# First and Second Floor







*Design*



*Bespoke*



*Luxury*



# CITY PALM RESIDENCES

## Penthouses



**Location :** Cyprus, Limassol (City Centre)

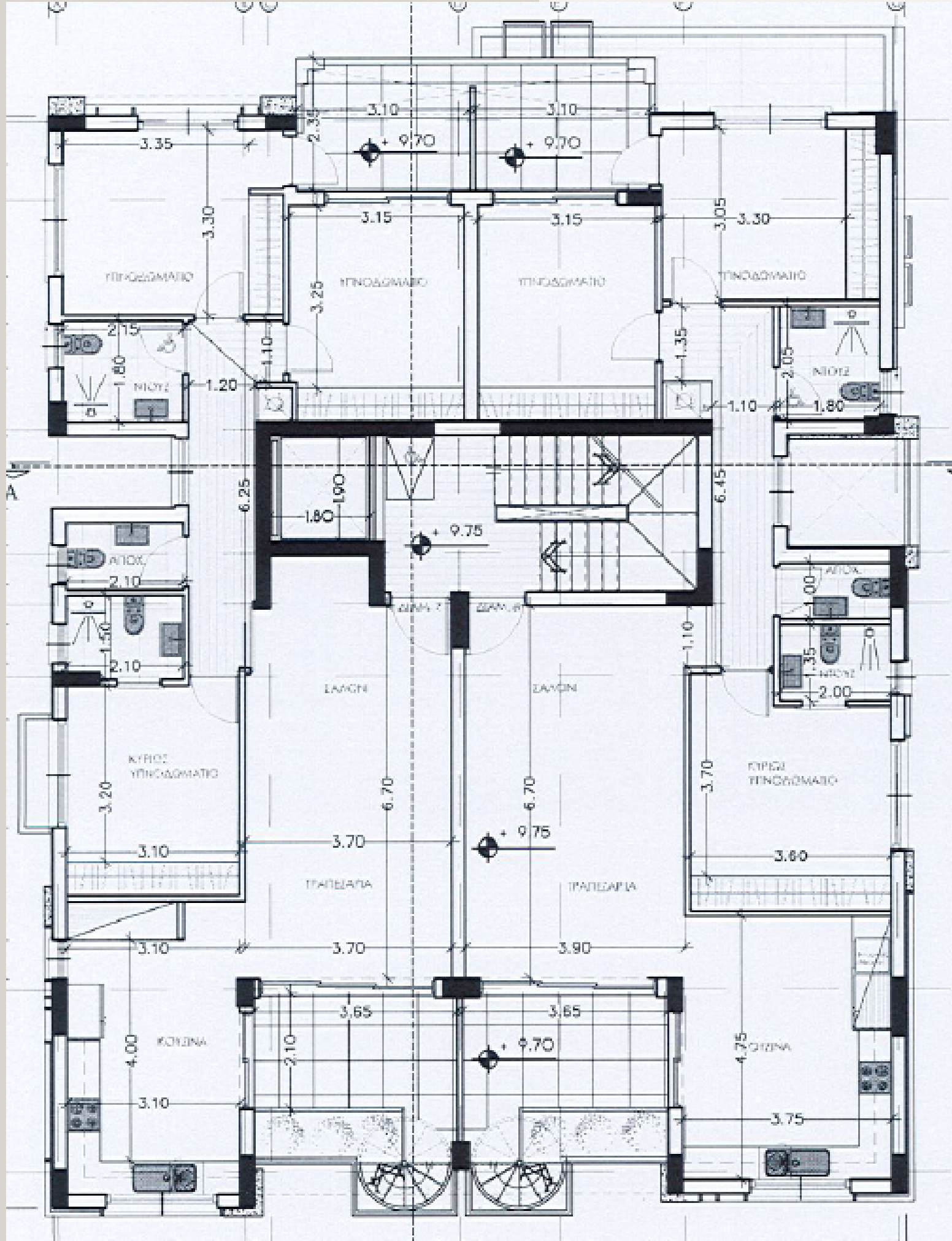
### **Apartment Features :**

- 3 Bedrooms
- Spacious kitchen and living room
- Roof Garden
- Swimming pool
- Electric shutters

*The most important feature of the property is the massive outdoor space where you can enjoy a BBQ night or an al fresco dining with family and friends or even a romantic night with a glass of wine overlooking the beautiful view of the Mediterranean Sea.*

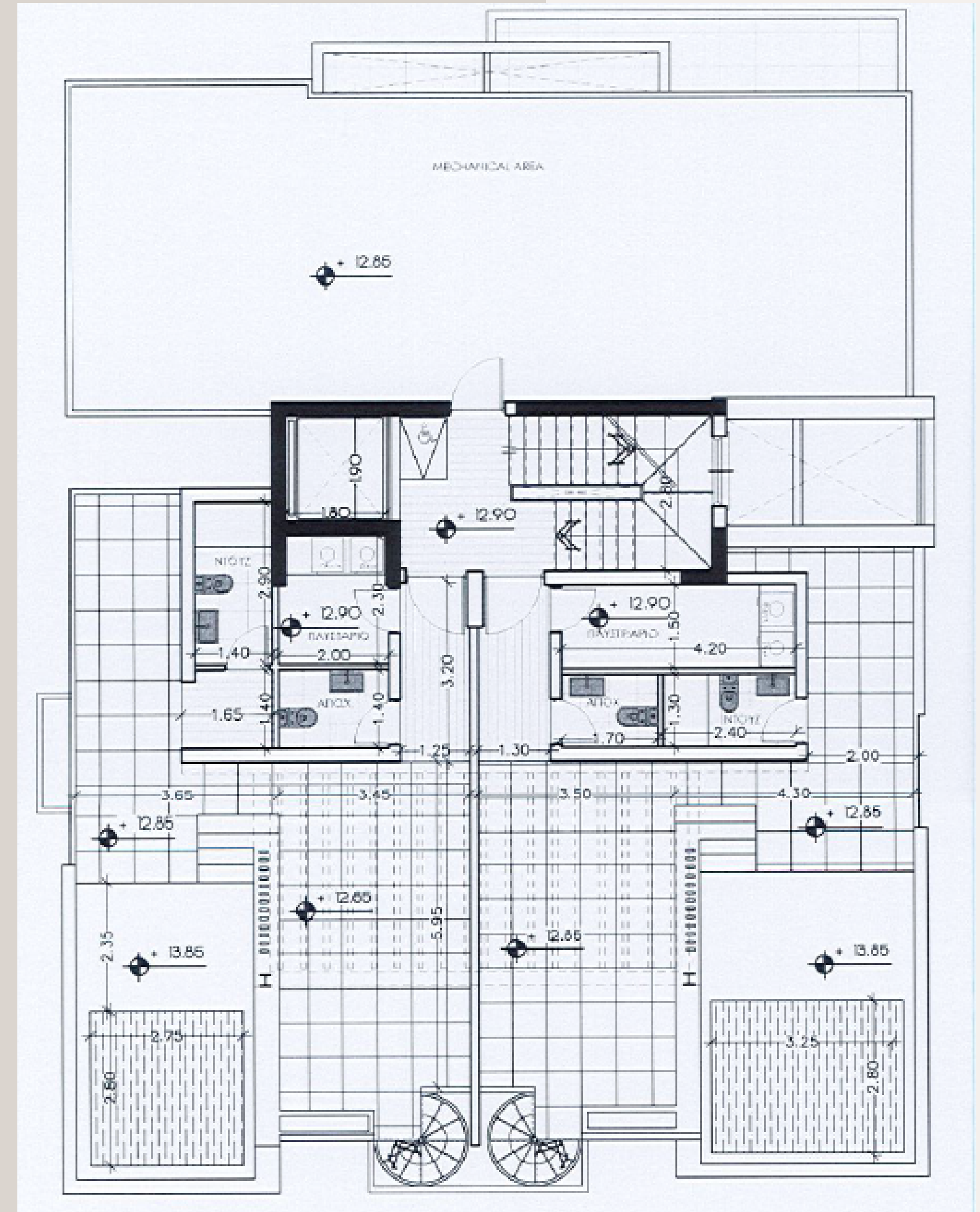


# Third Floor





# Roof Garden











# The Numbers

Flat No	Floor	Flat Area (m2)	No. of Bedrooms	Covered Verandas (m2)	Uncovered Verandas (m2)	Parking Space	Store Rooms (m2)	Private Roof Garden (m2)	Common Areas (m2)	Total Area (m2)	Prices
101	1	75	2	10	-	1	3.00	-	16.40	88	€370.000
102	1	76.65	2	10	-	1	2.75	-	16.40	89.65	€370.000
103	1	79.45	2	15	-	1	3.75	-	16.40	98.20	€380.000
201	2	75	2	10	-	1	4	-	16.40	89	€380.000
202	2	76.65	2	10	-	1	4	-	16.40	90.65	€380.000
203	2	79.45	2	10	5	1	4.5	-	16.40	98.95	€390.000
301	3	115.45	3	10	64 Roof Garden	1	4.5	21	16.40	150.95	€650.000
302	3	117.75	3	10	64 Roof Garden	2	4.5	23	16.10	155.25	€675.000

The above Prices do not Include applicable VAT





**CITY PALM RESIDENCES** consists of six luxurious apartments and two penthouses on three levels.

The panoramic views of the **CITY PALM RESIDENCES** are just a part of the idea of the deluxe lifestyle that will be appealing and attractive to the residents. There are apartments with two bedrooms and two penthouses of three bedrooms with parking spaces and storerooms on the ground floor. At the top of the **CITY PALM RESIDENCES** are the roof gardens with individual pools.

All residences have, electric shutters, and double glazing aluminum covered verandas. All floors have first-class ceramic tiles and laminate parquet where decorative ceiling lights will complement the beauty and functionality of the space in each apartment. **CITY PALM RESIDENCE**, a first-class building provides the desired comfort and quietness among the city dynamics.





# Contact Us

*For further information and detail*

✉ [citypalmresidences@gmail.com](mailto:citypalmresidences@gmail.com)

☎ +357 99 581300

📍 104 Agias Fylaxeos, Panayiotopoulos Court,  
Office 301, 3087 Limassol – Cyprus