



MITO PARAMOUNT



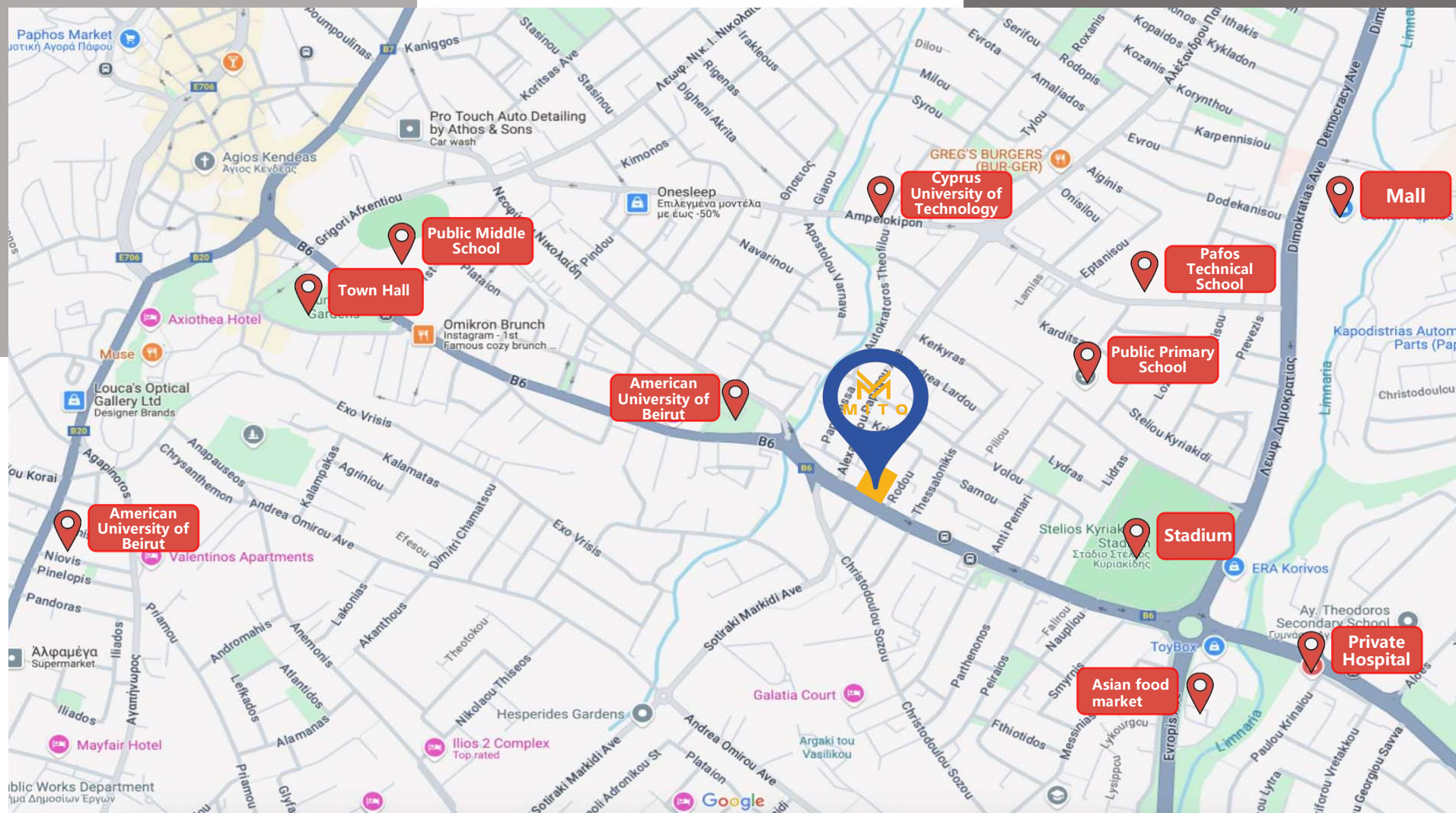
Elegant Luxury



While MITO Paramount itself may not change the world, the individuals who live here can.

Project Overview

- Paphos is actively developing into an academic and culturally rich university town, attracting prestigious institutions such as Paphos University, the Neapolis University, and the European University Cyprus Paphos Campus. With academies spread throughout the city, Paphos has become an ideal residential destination that features wisdom and artistic charm.
- MITO Paramount is strategically located at the heart of Paphos' university district, nearby the central campus of the globally renowned American University of Beirut. It is just 500 meters from the home stadium of the Paphos Football Club and in close proximity to the city's governmental and financial districts. This prime location of the MITO Paramount project are at the core of the city, making it a preferred residence for high-net-worth individuals.
- In the real estate investment sector, a golden rule prevails: “Location, Location, Location.” Whether one seeks property appreciation or high rental yields, the most critical factor is always location. MITO Paramount not only stands for the prime location in the city but also sets a new benchmark for modern urban living through its distinctive architectural design and humanistic vision.

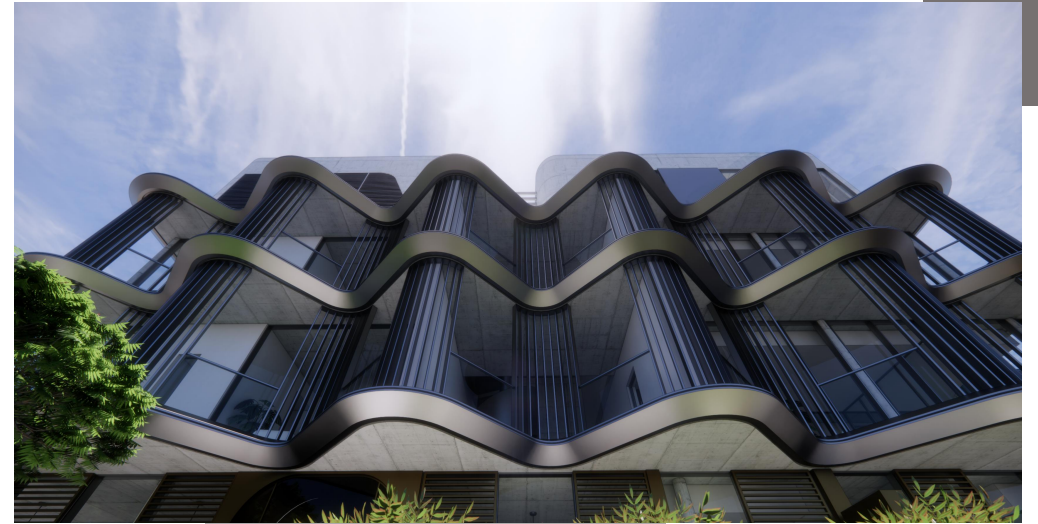




Architectural Design

MITO Paramount's architectural design is a masterpiece of art. The overall structure resembles a blooming lotus, with gentle waves rippling outward from the city center. This design concept embodies both architectural aesthetics and the core philosophy of the MITO brand — leveraging internal strength to shape and inspire urban life, bringing warmth to the city and offering a refined, effortless lifestyle in line with JOY IS MITO.

MITO Paramount features a highly distinctive design, with elegant exterior lines. The combination of glass and metal creates a unique visual effect as light and shadow intertwine. Its structural design seamlessly integrates natural elements, emphasizing natural light and ventilation to provide residents with a comfortable, high-end, and elegant living experience.



Paramount

Redefining the concept of Elegant Luxury, we seek balance amidst the rhythm of the city, where nature and urban prosperity complement each other, creating an ideal residence that nourishes both body and soul.



Elegant Luxury

- "Elegance" – Drawing inspiration from nature, the architecture embraces the beauty of the natural world, creating a serene and refined living environment.
- "Luxury" – Beyond the exquisite textures of premium materials and natural stone, true luxury lies in spiritual enrichment — where art and urban life converge in perfect harmony.
- Harmonious Coexistence – Elegance and luxury complement each other, seamlessly blending with the city to offer a sanctuary of purity and tranquility amid urban vibrancy.



Investment Value

Appreciation Potential

Located in the city ' s core, adjacent to world-class universities, ensuring long-term and stable property value growth.

Rental Returns

A hub for affluent individuals, academics, and entrepreneurs, ensuring a high and sustained rental demand.

Brand Assurance

As a premium real estate brand, MITO is committed to excellence, endowing properties with intrinsic value and heightened market recognition.

Paphos is undergoing a transformative shift toward becoming an academic and cultural hub, and MITO Paramount stands as the city ' s landmark development.

Its exceptional location, architectural excellence, and elite living standards make it a brilliant investment opportunity.

PARAMOUNT



MITO Paramount, with its prime location, innovative architecture, and distinctive lifestyle philosophy, redefines modern urban living. Here, a residence is not merely a home — it is a statement of a lifestyle in harmony with nature, culture, and the Pafos city.



MITO Paramount

is designed for those who deeply appreciate the history, culture, traditions, and charm of Cyprus and Paphos.



Top View



Basement



Ground Floor

001-1B 1T

Apartment Area:	60 m ²
Covered Verandas Area:	20.5 m ²
Uncovered Verandas Area:	7.6 m ²
Total Apartment Area:	88.1 m ²
Covered Parking:	12 m ²
Storage Room:	6.9 m ²
Green Planters:	22.75 m ²
Total Usable Area:	129.75 m ²

003-1B 1T

Apartment Area:	61.2 m ²
Covered Verandas Area:	12 m ²
Uncovered Verandas Area:	4.7 m ²
Total Apartment Area:	77.9 m ²
Covered Parking:	12 m ²
Storage Room:	4.35 m ²
Green Planters:	20.8 m ²
Total Usable Area:	115.05 m ²

002-1B 1T

Apartment Area:	56.1 m ²
Covered Verandas Area:	15.2 m ²
Uncovered Verandas Area:	32.8 m ²
Total Apartment Area:	104.1 m ²
Covered Parking:	12 m ²
Storage Room:	4.4 m ²
Green Planters:	27.1 m ²
Total Usable Area:	147.6 m ²



102-2B 2T

Apartment Area:	78 m ²
Covered Verandas Area:	22 m ²
Total Apartment Area:	100 m ²
Covered Parking:	12 m ²
Storage Room:	4.7 m ²
Total Usable Area:	116.7 m ²



101-2B 2T

Apartment Area:	82 m ²
Covered Verandas Area:	16.6 m ²
Total Apartment Area:	98.6 m ²
Covered Parking:	12 m ²
Storage Room:	4.3 m ²
Total Usable Area:	114.9 m ²

202-2B 2T

Apartment Area:	83 m ²
Covered Verandas Area:	22.4 m ²
Total Apartment Area:	105.4 m ²
Covered Parking:	12 m ²
Storage Room:	4.3 m ²
Total Usable Area:	121.7 m ²



201-2B 2T

Apartment Area:	82 m ²
Covered Verandas Area:	16.6 m ²
Total Apartment Area:	98.6 m ²
Covered Parking:	12 m ²
Storage Room:	4.15 m ²
Total Usable Area:	114.75 m ²

301-1B 1T

Apartment Area:	57.15 m ²
Uncovered Verandas Area:	25.4 m ²
Total Apartment Area:	82.55 m ²
Covered Parking:	12 m ²
Storage Room:	4.1 m ²
Green Planters:	3.25 m ²
Total Usable Area:	101.9 m ²



302-3B 2T

Apartment Area:	112.9 m ²
Covered Verandas Area:	8.5 m ²
Uncovered Verandas Area:	36.2 m ²
Total Apartment Area:	157.6 m ²
Covered Parking:	12 m ²
Storage Room:	4.15 m ²
Total Usable Area:	173.75 m ²

Third Floor



MITO PARAMOUNT

...

www.mitodevelopers.com

☎ 8000 0007