



LIVADIA 793



Location



The project
793 Livadia

Description

Situated at 15mn from Larnaca International Airport, The project is located in the calm and luxurious residential Town of Livadia.

The Project occupies a prime corner site, a stunning location with a calm atmosphere.

The project was designed to blend comfort and convenience in every aspect.

Homeowners will be able to enjoy coziness and comfort. Available in different styles & sizes, the projects offers a wide variety of apartments that ranges from lofts with private gardens to a unique open space apartment to special apartments with roof gardens.

Livadia 793 will be accommodating solar panels on the roof to reduce the use of electricity and all electrical equipment will be energy saver .

FIRST FLOOR PLAN



Flat 101 (Exec. Simplex)

Interior	74.7 sqm
Covered Veranda	19.9 sqm
Warehouse	2.55 sqm
Total Covered Area	97.15 sqm
Garden Uncovered	
Common Area	16.6 sqm
Total Area	113.75 sqm

Flat 102 (Simplex)

Interior	77.9 sqm
Covered Veranda	20.6 sqm
Warehouse	2.47 sqm
Total Covered Area	100.97 sqm
Garden Uncovered	
Common Area	16.6 sqm
Total Area	117.57sqm

Flat 103 (Duplex Penthouse)

Interior	92.4 sqm
Covered Veranda	27.8 sqm
Warehouse	22.25 sqm
Total Covered Area	142.45 sqm
Garden Uncovered	43.1 sqm
Common Area	16.6 sqm
Total Area	202.15 sqm

SECOND FLOOR PLAN



Flat 201 (Exec. Penthouse)

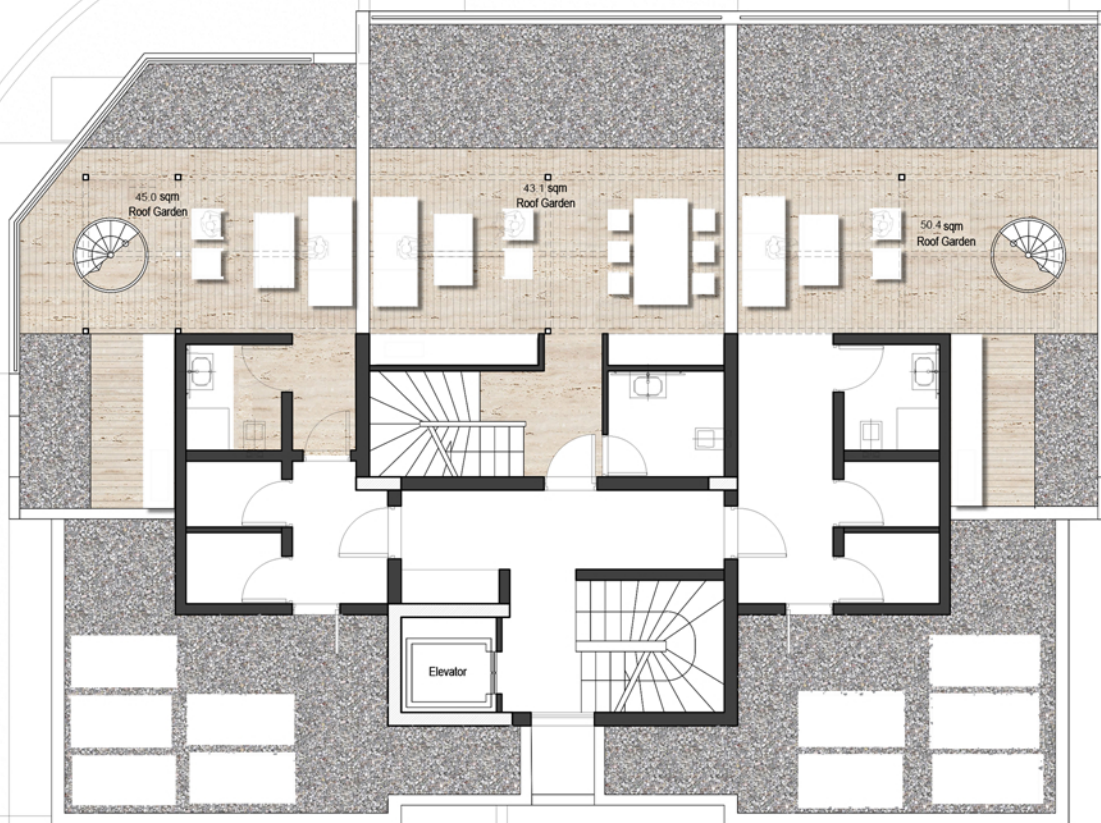
Interior	74.7 sqm
Covered Veranda	19.9 sqm
Warehouse	6.3 sqm
Total Covered Area	100.9 sqm
Garden Uncovered	45.0 sqm
Common Area	16.6 sqm
Total Area	162.5 sqm

Flat 202 (Penthouse)

Interior	77.7sqm
Covered Veranda	20.6 sqm
Warehouse	6.3 sqm
Total Covered Area	104.6 sqm
Garden Uncovered	50.4 sqm
Common Area	16.6 sqm
Total Area	171.6 sqm

Flat 103 (Duplex Penthouse)

Interior	92.4 sqm
Covered Veranda	27.8 sqm
Warehouse	22.25 sqm
Total Covered Area	142.45 sqm
Garden Uncovered	43.1 sqm
Common Area	16.6 sqm
Total Area	202.15 sqm



Flat 201 (Exec. Penthouse)

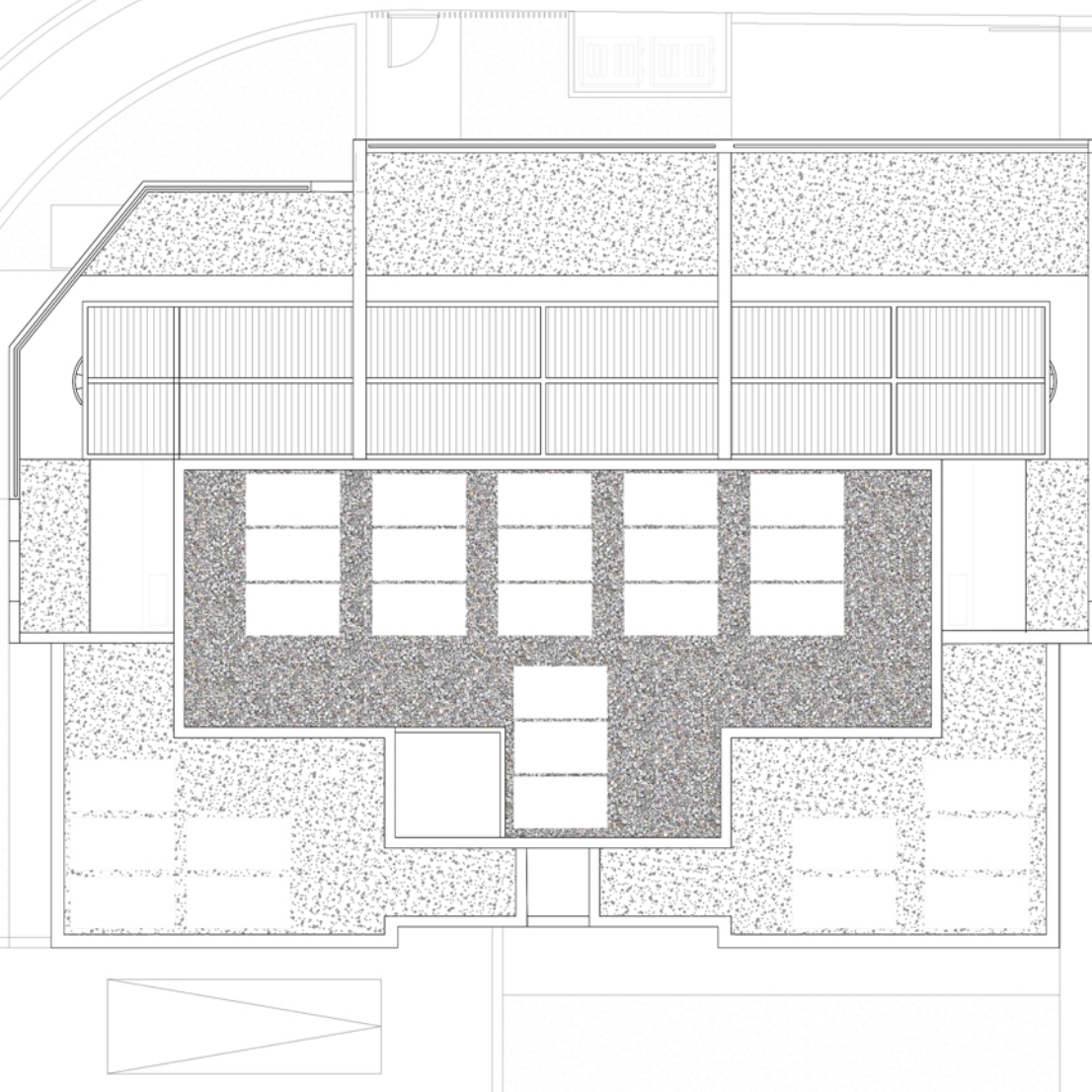
Interior	74.7 sqm
Covered Veranda	19.9 sqm
Warehouse	6.3 sqm
Total Covered Area	100.9 sqm
Garden Uncovered	45.0 sqm
Common Area	16.6 sqm
Total Area	162.5 sqm

Flat 202 (Penthouse)

Interior	77.7sqm
Covered Veranda	20.6 sqm
Warehouse	6.3 sqm
Total Covered Area	104.6 sqm
Garden Uncovered	50.4 sqm
Common Area	16.6 sqm
Total Area	171.6 sqm

Flat 103 (Duplex Penthouse)

Interior	92.4 sqm
Covered Veranda	27.8 sqm
Warehouse	22.25 sqm
Total Covered Area	142.45 sqm
Garden Uncovered	43.1 sqm
Common Area	16.6 sqm
Total Area	202.15 sqm



MASTER FLOOR PLAN

Flat 201 (Exec. Penthouse)

Interior	74.7 sqm
Covered Veranda	19.9 sqm
Warehouse	6.3 sqm
Total Covered Area	100.9 sqm
Garden Uncovered	45.0 sqm
Common Area	16.6 sqm
Total Area	162.5 sqm

Flat 202 (Penthouse)

Interior	77.7sqm
Covered Veranda	20.6 sqm
Warehouse	6.3 sqm
Total Covered Area	104.6 sqm
Garden Uncovered	50.4 sqm
Common Area	16.6 sqm
Total Area	171.6 sqm

Flat 103 (Duplex Penthouse)

Interior	92.4 sqm
Covered Veranda	27.8 sqm
Warehouse	22.25 sqm
Total Covered Area	142.45 sqm
Garden Uncovered	43.1 sqm
Common Area	16.6 sqm
Total Area	202.15 sqm



MAIN ELEVATION

LIVADIA 793



SIDE ELEVATION -02



SIDE ELEVATION -01



BACK ELEVATION

LIVADIA 793



LIVADIA 793



LIVADIA 793



LIVADIA 793



LIVADIA 793



LIVADIA 793



LIVADIA 793

Outline Specification:

Framework: Earthquake resistant reinforced concrete.

Walls: Hollow bricks, internally three coats plastering and three coats emulsion paint and externally rendered in three coats and exterior Sandtex-type paint.

Floor Finishes:

- (a) Living areas, kitchen and bedrooms: ceramics tiles
- (b) Verandahs: ceramic tiles purchase

Wall Finishes:

- (a) Bathroom area glazed tiles
- (b) Kitchen: glazed tiles

Doors (as per detailed drawings): Internal doors in embossed melamine finish. Main entrance to flats with solid wood external surface, varnished.
External doors with double-glazed aluminium.

Windows (as per detailed drawings): Double-glazed, aluminium framework, thermally insulated.

Kitchen Units (as per detailed drawings): Internally melamine finish with doors in embossed melamine finish. Granite worktop

Wardrobes: Internally melamine finish with doors in embossed melamine finish.

Sanitary Fittings: First quality white colour,



Plumbing and Sanitary installation: As per detailed drawings and according to EU and British Standards. Waste water drainage system with uPVC pipes.

Water Supply: Pressurized System with solar panels & water tank to be installed at roof level. Fresh water supply to kitchen sink.

Electrical Installation: As per detailed drawings and according to EU and EAC Standards.

Air Conditioning: Provisions provided for future installation of AC split units to all bedrooms and living areas.

Videophone: Installation of main entrance videophone.

Parking: Parking space provided.

Store: Store on ground floor provided.



Livadia 793					
	Interior	Covered Veranda	Warehouses	Total Covered Area	Garden Uncovered
Flat 01 Ground Floor	74.4 sqm	15.9 sqm	5.4 sqm	96.0 sqm	106.6 sqm
Flat 101 Exec. Simplex	74.4 sqm	19.9 sqm	2.55 sqm	97.15 sqm	
Flat 102 Simplex	77.9 sqm	20.6 sqm	2.47 sqm	100.97 sqm	
Flat 103 Duplex Penthouse	92.4 sqm	27.8 sqm	22.25 sqm	142.45 sqm	43.1 sqm
Flat 201 Exec. Penthouse	74.7 sqm	19.9 sqm	6.3 sqm	100.9 sqm	45.0 sqm
Flat 202 Penthouse	77.7 sqm	20.6 sqm	6.3 sqm	104.6 sqm	50.4 sqm

