



## ► *STEPHAN 111 RESIDENCES*

“**TRUST** is just one of the things  
We **BUILD** Well.  
Whatever It **TAKES**...  
We Build **TOMORROW**”







## ► About us

### "E.STEPHAN DEVELOPERS"

Real Estate Development Company was founded in 1972.

The company has had an impeccable track record since its establishment, owing in part to its clear and comprehensive strategy, which we believe enables us to realize our full potential and successfully pursue our ambitions for continuous growth.

The scope of services offered comprises 88 residential properties as well as 9 business centers abroad and 13 residential properties in Cyprus.

### "E.STEPHAN DEVELOPERS"

Real Estate Development company, a trusted name in the delivery of residential and business centers that has successfully orchestrated the completion and delivery of over 1500 residential and commercial units.

### "E.STEPHAN DEVELOPERS"

works hard to maintain the quality of its service offering at all times, and strives toward continuously setting new standards in innovation and development.

### "E.STEPHAN DEVELOPERS"

Real Estate Development delivers total satisfaction to its customers in an efficient and timely manner, and does so in accordance with an established tradition of excellence.

After the success of our projects in Cyprus

"STEPHAN 98 RESIDENCES" | "STEPHAN 99 VILLAS" | "STEPHAN 100 RESIDENCES"

"STEPHAN 101 RESIDENCES" | "STEPHAN 102 RESIDENCES" | "STEPHAN 103 RESIDENCES"

"STEPHAN 104 RESIDENCES" | "STEPHAN 105 RESIDENCES" | "STEPHAN 106 RESIDENCES"

"STEPHAN 107 RESIDENCES" | "STEPHAN 108 RESIDENCES" | "STEPHAN 109 RESIDENCES"

"STEPHAN 110 RESIDENCES"

We are absolutely proud to release our FOURTEENTH project in Cyprus

**"STEPHAN 111 RESIDENCES"** In Livadia Area - Larnaca.

"TRUST is just one of the things  
We BUILD Well.  
Whatever It TAKES...  
We Build TOMORROW"



# ► *"E.STEPHAN DEVELOPERS"*

proudly release

*OUR FOURTEENTH PROJECT IN LARNACA*

## *"STEPHAN 111 RESIDENCES"*

**"STEPHAN 111 RESIDENCES"** will provide you the tranquility of a truly residential neighborhood surrounded by villas & park within the most popular and prestigious area of Larnaca – Livadia – Agios Savva Church Area.

**"STEPHAN 111 RESIDENCES"** is a residential building of Eight luxurious apartments in Livadia city. very close to the Beaches & the new Marina where you can find in less than 7 minutes walking distance Supermarket, restaurants, coffee shops, Bakeries, Banks, Wear Shops and all other amenities.

**"STEPHAN 111 RESIDENCES"** has a prime location because it is:

- 7 minutes Walking to all amenities like supermarket, Bakeries, Banks, Wear Shops ...
- 3 minutes Driving to "AMERICAN UNIVERSITY OF CYPRUS".
- 6 minutes Driving to Finikoudes & Ermou square
- 8 minutes Driving the best private schools in Cyprus "AMERICAN ACCADEMY" & "MED HIGH".
- 12 minutes Driving to the "international Larnaca Airport".
- 13 minutes Driving to the famous international British university "UCLAN"
- 28 minutes Driving to Nissi Beach "ayia nappa".
- 30 minutes Driving to "Nicosia".
- 40 minutes Driving to Fig Tree Beach "Protaras".
- 50 minutes Driving to "Limassol".

**"STEPHAN 111 RESIDENCES"** extend with iconic architecture by our Architects. The signature interiors by E. Stephan Developers bring an ultimate knowledge of hospitality, with a palette of rich materials and a host of thoughtfully designed details.

*"TRUST is just one of the things  
We BUILD Well.  
Whatever It TAKES...  
We Build TOMORROW"*







## "STEPHAN 111 RESIDENCES" HAS

- Four Apartments of two bedrooms & two bathrooms And another Four of one bedroom & one bathroom which all have a large living room unified with the kitchen. Moreover, there are big verandas & each flat benefits from a storage room at the ground floor with a covered car parking.

- & •The two Penthouses apartments of two bedrooms have three bathrooms which have a large living room unified with the kitchen. Moreover, there are big verandas with an unobscured view & the Penthouses benefit privately from a huge roof garden overlooking to larnaca Downtown where you can reach it through an internal marble stair or through the elevator, and they have or each a storage room & a covered car parking at the ground floor.

Both the indoor and exterior design of "STEPHAN 111 RESIDENCES" jointly with technology as well as our 51 years of experience will make your dreams reality and create your own nest which will express your personality in your apartment.

The extraordinary know-how of our team combined with the use of valuable European materials will give you the maximum emotion, pleasure and value for money.

---

“**TRUST** is just one of the things  
We **BUILD** Well.  
Whatever It **TAKES**...  
We Build **TOMORROW**”







# ► *Technical Specifications*

---

## Earthworks

Excavation of plot to reach good soil conditions, a polyester membrane will be applied to minimize moist rising before pouring one layer of concrete thickness around ten centimeters.

## Foundations & Framework

"Antiseismic reinforced concrete according to the relevant Cyprus Standards and the earthquake code."

## Brickwork

"Thermo-insulated bricks, 250mm wide externally and 100mm wide internally according to Cyprus Standards, internally three coats plastering and three coats emulsion paint and externally Polystyrene 8cm applied to all the external surfaces rendered in three coats and exterior Ghraffiado paint as shown in the perspective. "

## External appearance

Synthetic wood & Alucobond on the external walls of the project in accordance with the architectural plans as shown in the perspective.

## Floor & Ceramic Tiles

All living room, dining area, kitchen, corridors, bathrooms and bedroom areas will be finished with European tiles of supply price €15 per m2 including VAT (retail price). Bathrooms will be tiled (floor and walls up to 2.4 meters high).

## External Aluminum Doors & Windows

"All the Aluminum doors & windows are Thermal Insulated & double-glazed. And they will include opening or sliding sections (as per drawings)."

## Carpentry

"High quality interior & entrance doors of melamine beech-wood veneer covered in plywood or similar kind, apartment entrance doors will be fire resistant in accordance with the Cyprus fire-brigade regulations."







## Wardrobes & Kitchen Units

"High quality wardrobes laminate as shown on the drawings With a modern kitchen base laminate matt-wall units and white glossy. The worktop surface is Granite/Quartz at €500 including VAT (retail price)."

## Sanitary Fittings

All of 1st quality sanitary fittings & fixtures including accessories are according to EU Standards of supply price 1500 per 2 bedroom flat & 1000 per 1 bedroom flat including VAT (retail price).

## Plumbing & Sanitary installation

"According to British standards U.P.V.C. pipes for drainage and pipe-in-pipe system for cold/ hot water supply."

## Water Supply

Hot and cold water supply and installation according to EU Standards and solar panels with PVC water tank to be installed at roof level as shown on drawings.

## Presurized System

Presurized pump at roof level for each apartment.

## Electrical Installation

All electrical installations are made as required by the Cyprus Electricity Authority. Power supply points and switches are as shown on electrical drawings.

## Videophone

Installation of videophone at the main entrance.

## Elevator

"A very luxury cabin stainless steel with the latest gearless technology to minimize sound during operation."

## Air-conditioning

"Full installation of piping (provisions) for air conditioning units in all areas in the apartments."







## Insulation

Below the tiles, all balconies and roof gardens are insulated against moisture.

## Parking

"Automatic parking gate as shown in the perspective. One Covered parking space to each apartment."

## Entrance Lobby

A five star luxury entrance lobby designed with mirrors, wood marble & granite.

## Corridors & Stairs

Marble to be used on the stairs and in all common areas.

## External Areas

All external areas will be finished according to the Perspective.

## Photovoltaic System

Photovoltaic System or Solar Power System which is the latest technology to convert light directly into electricity in order to minimize your electricity bills.

## NOTES

---

Clients are entitled of carrying out any internal alterations with the approval of the architect and subject to project progress. The vendors and/or the architects of the building have the right to make any minor alterations to any part of the building and its specifications for aesthetic or technical reasons provided the individual apartments are not affected.

“**TRUST** is just one of the things  
We **BUILD** Well.  
Whatever It **TAKES**...  
We Build **TOMORROW**”





*GROUND FLOOR*





## FLAT 101

1 BEDROOM  
1 BATHROOM  
52.00 SQM INTERIOR  
10.00 SQM COV. VERANDA  
4.50 SQM COMMON AREAS  
12.00 SQM PARKING SPACE  
2.30 SQM STORAGE ROOM

**TOTAL FLAT AREA**  
80.80 SQM

## FLAT 102

2 BEDROOMS  
2 BATHROOMS  
76.00 SQM INTERIOR  
17.00 SQM COV. VERANDA  
4.50 SQM COMMON AREAS  
12.00 SQM PARKING SPACE  
2.30 SQM STORAGE ROOM

**TOTAL FLAT AREA**  
111.80 SQM

## FLAT 103

2 BEDROOMS  
2 BATHROOMS  
81.00 SQM INTERIOR  
19.00 SQM COV. VERANDA  
4.50 SQM COMMON AREAS  
12.00 SQM PARKING SPACE  
2.30 SQM STORAGE ROOM

**TOTAL FLAT AREA**  
118.80 SQM

## FLAT 104

1 BEDROOM  
1 BATHROOM  
52.00 SQM INTERIOR  
10.00 SQM COV. VERANDA  
4.50 SQM COMMON AREAS  
12.00 SQM PARKING SPACE  
2.30 SQM STORAGE ROOM

**TOTAL FLAT AREA**  
80.80 SQM

# FIRST FLOOR





## FLAT 201

1 BEDROOM  
1 BATHROOM  
52.00 SQM INTERIOR  
10.00 SQM COV. VERANDA  
4.50 SQM COMMON AREAS  
12.00 SQM PARKING SPACE  
2.30 SQM STORAGE ROOM

**TOTAL FLAT AREA**  
80.80 SQM

## FLAT 202

2 BEDROOMS PENTHOUSE  
3 BATHROOMS  
81.00 SQM INTERIOR  
17.00 SQM COV. VERANDA  
63.00 SQM UNCOV. VERANDA  
4.50 SQM COMMON AREAS  
12.00 SQM PARKING SPACE  
2.30 SQM STORAGE ROOM

**TOTAL FLAT AREA**  
179.80 SQM

## FLAT 203

2 BEDROOMS ENTHOUSE  
3 BATHROOMS  
86.00 SQM INTERIOR  
19.00 SQM COV. VERANDA  
68.00 SQM UNCOV. VERANDA  
4.50 SQM COMMON AREAS  
12.00 SQM PARKING SPACE  
2.30 SQM STORAGE ROOM

**TOTAL FLAT AREA**  
191.80 SQM

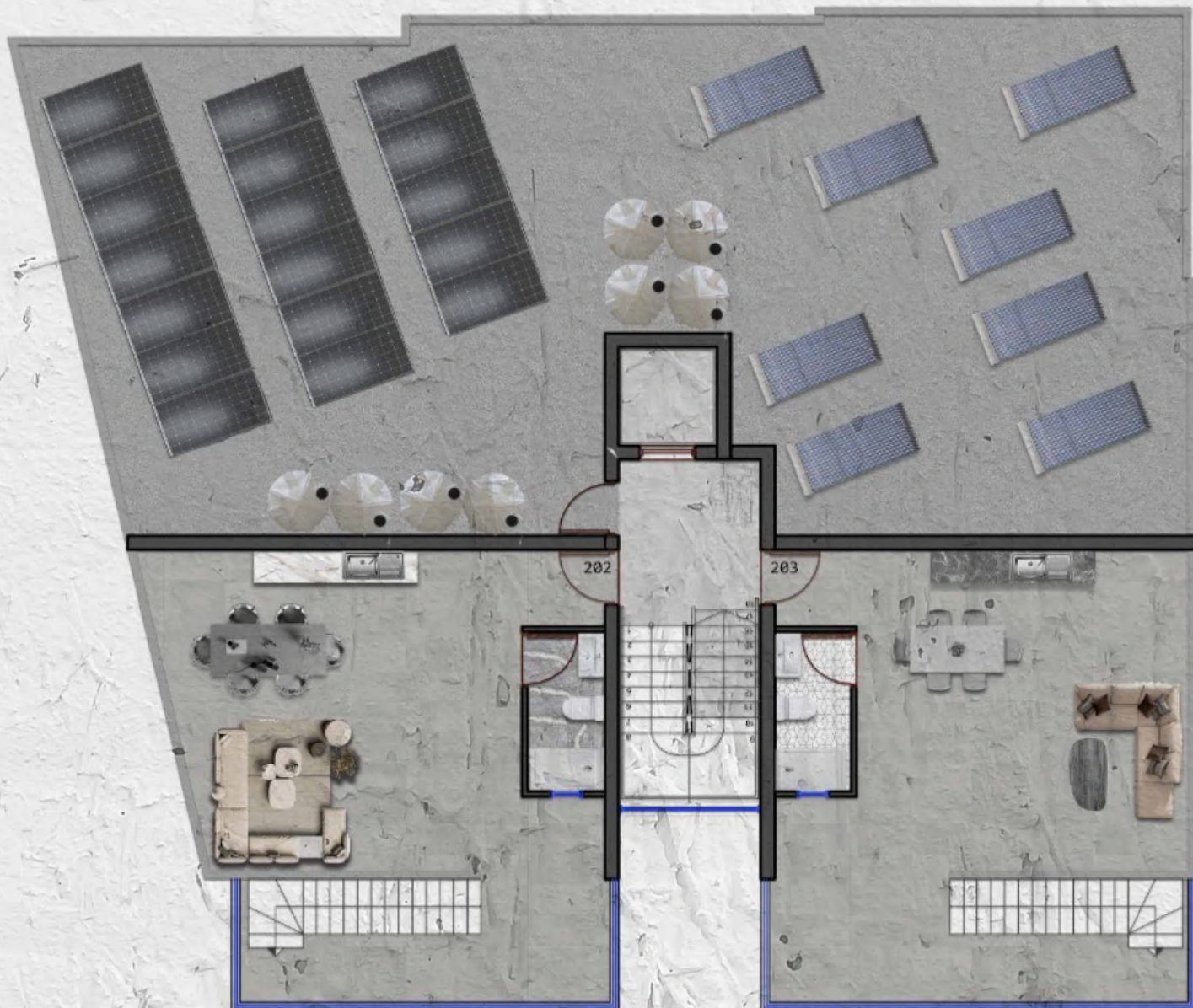
## FLAT 204

1 BEDROOM  
1 BATHROOM  
52.00 SQM INTERIOR  
10.00 SQM COV. VERANDA  
4.50 SQM COMMON AREAS  
12.00 SQM PARKING SPACE  
2.30 SQM STORAGE ROOM

**TOTAL FLAT AREA**  
80.80 SQM

# SECOND FLOOR





*ROOF GARDEN*

















## *STEPHAN 111 RESIDENCES*



[www.stephandevelopers.com](http://www.stephandevelopers.com)



E.Stephan developers LTD



[stephanelie@hotmail.com](mailto:stephanelie@hotmail.com)



+357 96 644 535