

SERENITY HOMES



ABOUT SERENITY HOMES

Thoughtfully designed across two levels, each home combines clean architectural lines with practical functionality — ideal for families, professionals, or investors seeking a refined lifestyle in one of Limassol's most promising residential neighborhoods.

Serenity Homes in Ypsoupoli offer a rare balance: peaceful surroundings, convenient access to schools and shops, and the vibrant energy of central Limassol just minutes away.



SERENITY HOMES

FEATURES



3 – 4 Bedrooms
3 Bathrooms

198 – 208 m²
Total Area

fig



PRIME LOCATION
YPSONAS, LIMASSOL



PRIME LOCATION YPSONAS, LIMASSOL



Nestled in the up-and-coming Ypsoupoli area of Limassol, this newly developed collection of homes offers a harmonious blend of modern design and suburban comfort.

Located within easy reach of city amenities and just a short drive from the coast, these residences deliver a fresh standard of Mediterranean living.



FACILITIES & AMENITIES

Central Heating
Swimming Pool
Photovoltaic System

Open Plan Living
Smart Technology
En-suite Bathrooms

Private Parking
Swimming Pool (optional)
Landscaped Gardens





PROJECT UNITS

Ref no	Beds	Baths	Plot	Covered	Covered Veranda	Total Covered	Availability
001	3	3	210	160	38	198	€450,000+vat
002	4	4	320	165	38	203	€490,000+vat
003	4	4	327	165	43	208	€500,000+vat
004	3	3	206	160	38	198	€445,000+vat



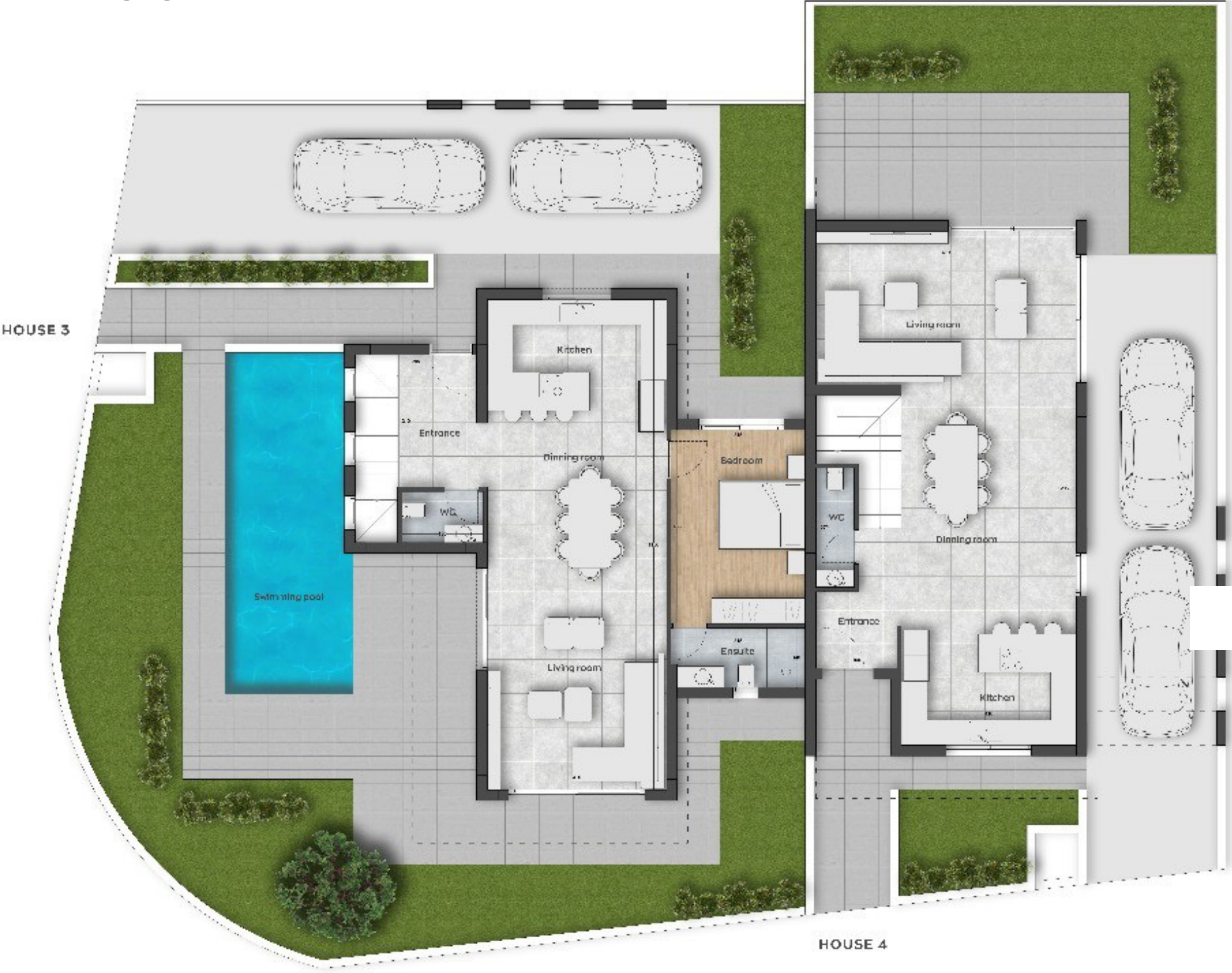
FLOOR PLANS
GROUND FLOOR



FLOOR PLANS
GROUND FLOOR



FLOOR PLANS
GROUND FLOOR



FLOOR PLANS
FIRST FLOOR

HOUSE 03



HOUSE 04



FLOOR PLANS
FIRST FLOOR





GET IN TOUCH

FG FOTIOU

Tel: +357 96 919019

Email: info@fgfotiou.com

