

---

The logo for Korantina Homes is centered at the top. It consists of a black square with a thin white border. Inside the square, the word "KORANTINA" is written in white, uppercase, sans-serif font. Below it, the word "HOMES" is written in a larger, yellow, uppercase, serif font.

**KORANTINA**  
**HOMES**

---

SEA FRONT VILLA

# SEA FRONT VILLA





LOCATED IN SEA CAVES

KORANTINA  
HOMES





THE VILLA ENJOYS VIEWS OF THIS UNIQUE SCENERY FROM EVERY CORNER OF THE PROPERTY

**KORANTINA**  
**HOMES**





RENOVATED TO THE HIGHEST STANDARD

**KORANTINA**  
**HOMES**





# LARGE MATURE GARDENS AND SWIMMING POOL

**KORANTINA**  
**HOMES**







**KORANTINA  
HOMES**

# A SPACIOUS LIVING AREA

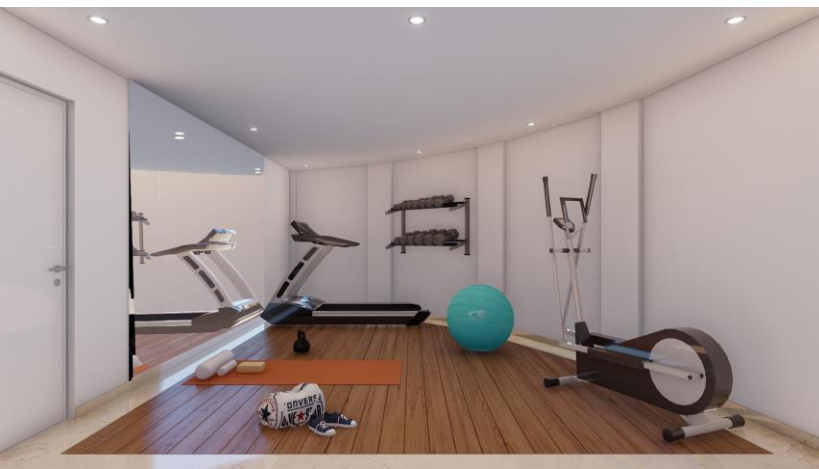
OPEN PLAN DINING AND KITCHEN





# 5 BEDROOMS, A GYM, UTILITY ROOM AND COVERED GARAGE

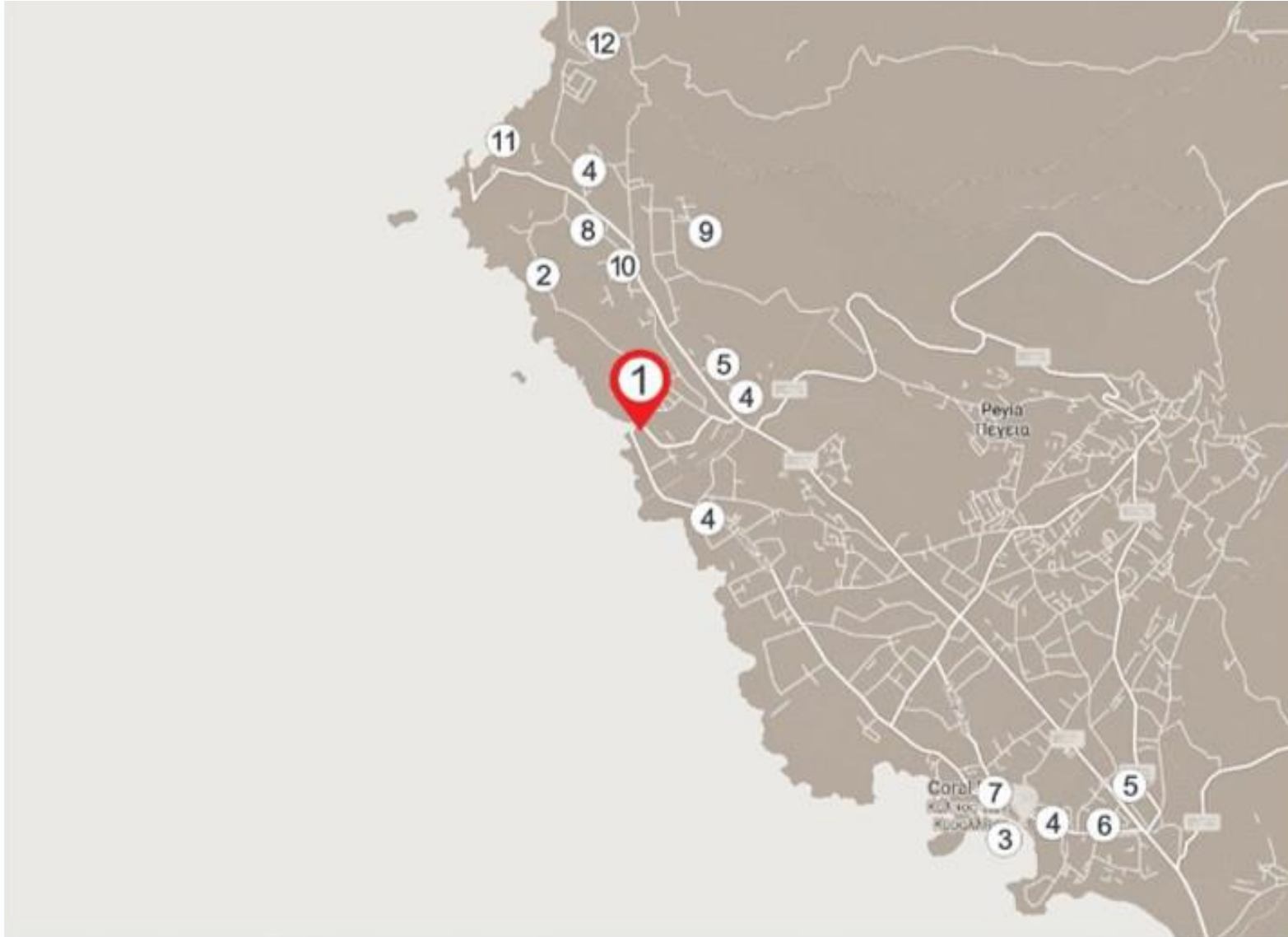
**KORANTINA**  
**HOMES**





CLOSE TO ALL AMENITIES WHILST MAINTAINING A SECLUDED AND PICTURESQUE LOCATION

**KORANTINA**  
**HOMES**



1. SEAFRONT RENOVATION VILLA

2. Cap St Georges Beach Resort and Hotel 1 mins

3. Coral Bay Beach 7 mins

4. Restaurants & Bars 5 mins

5. Supermarket 5 mins

6. Pharmacy 5 mins

7. Medical Center 5 mins

8. Private School 3 mins

9. Paphos Zoo 3 mins

10. George's Horse Ranch 2 mins

11. St. George Port 6 mins

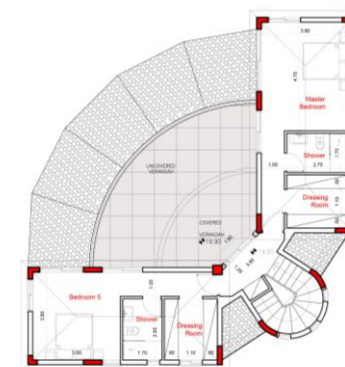
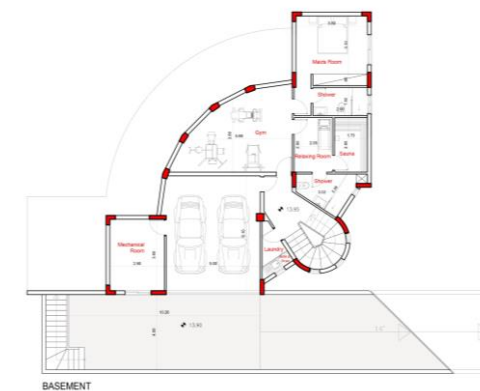
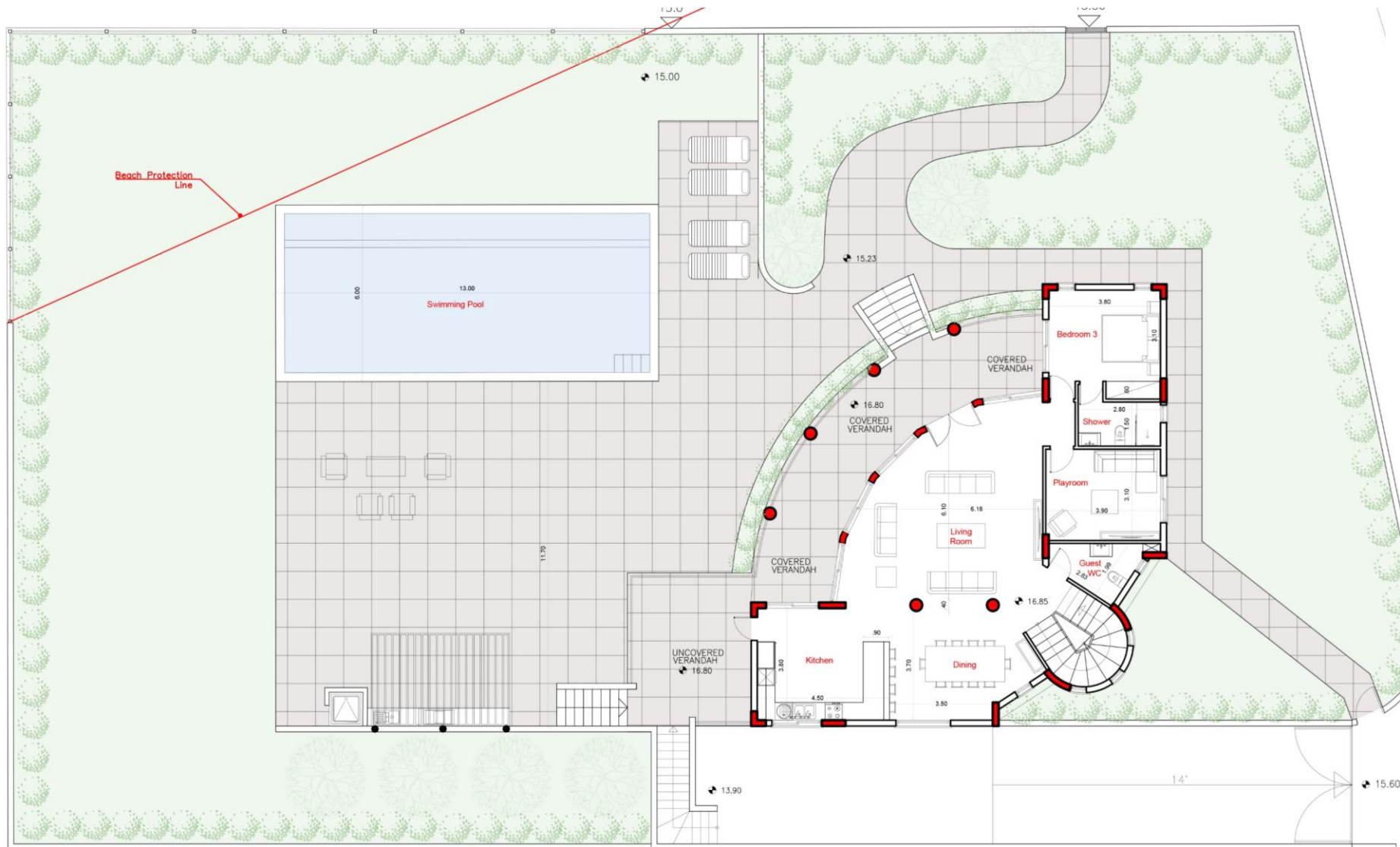
12. Akamas Peninsula 15mins

13. Nearest Beach 3 mins



1299SQ.M. PLOT  
390SQ.M. COVERED AREAS

**KORANTINA  
HOMES**







— WELCOME TO LUXURY —

