



ASSET
ACQUISITION
PROPOSAL

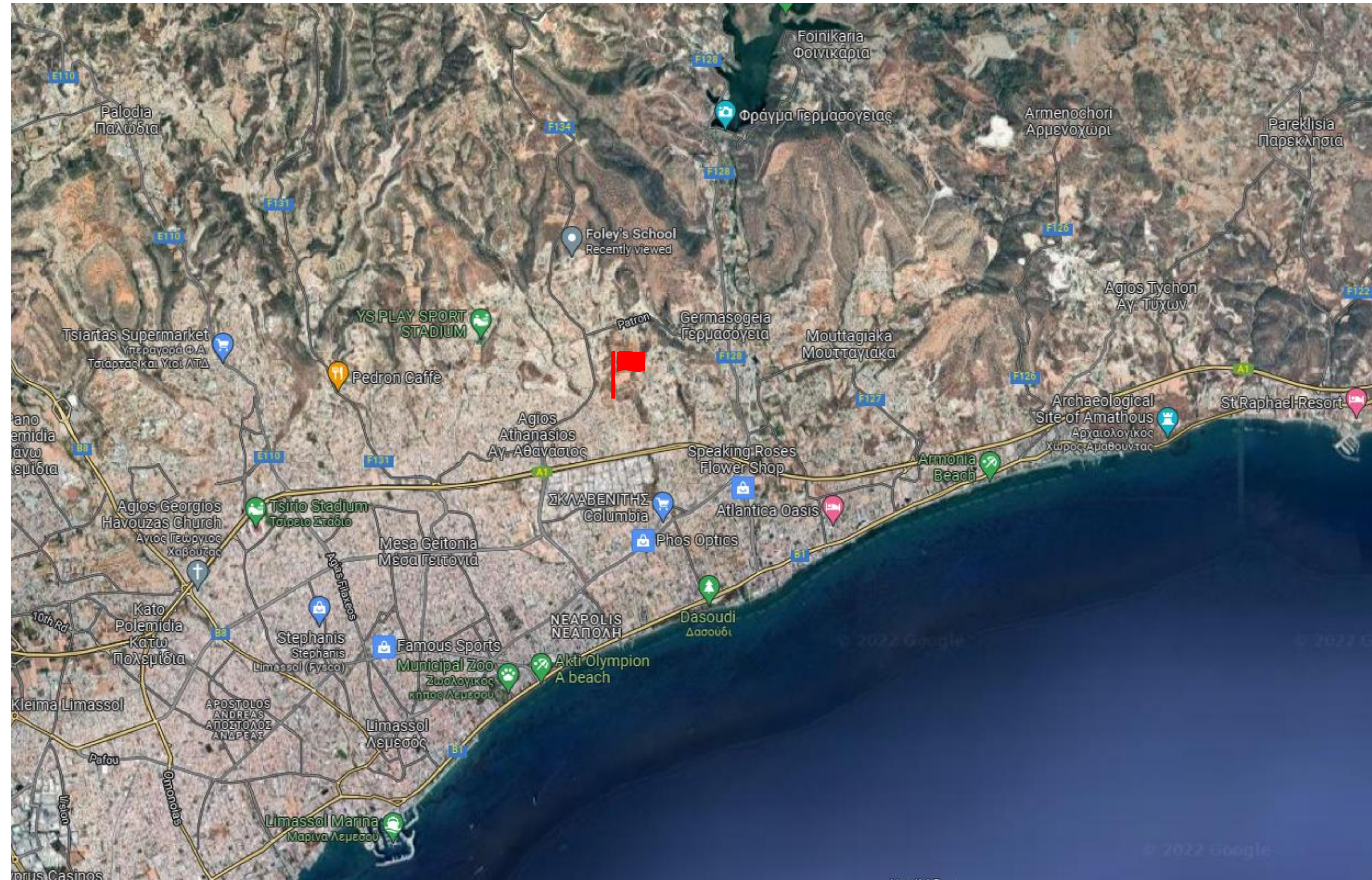
61 Apt Project

INVESTMENT PROJECT

Limassol – residential complex.

Land:	6 009 m2
Flats:	61 (up to 80 increase)
Planning permits:	Received

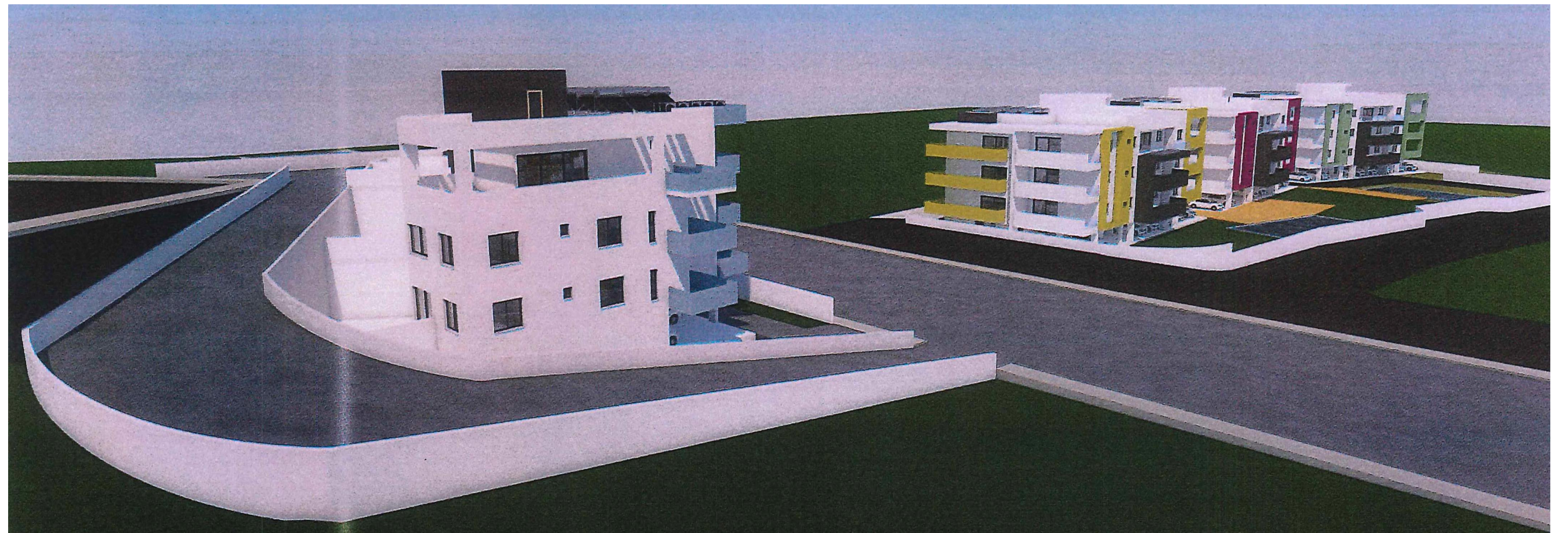
LOCATION



PICTURES



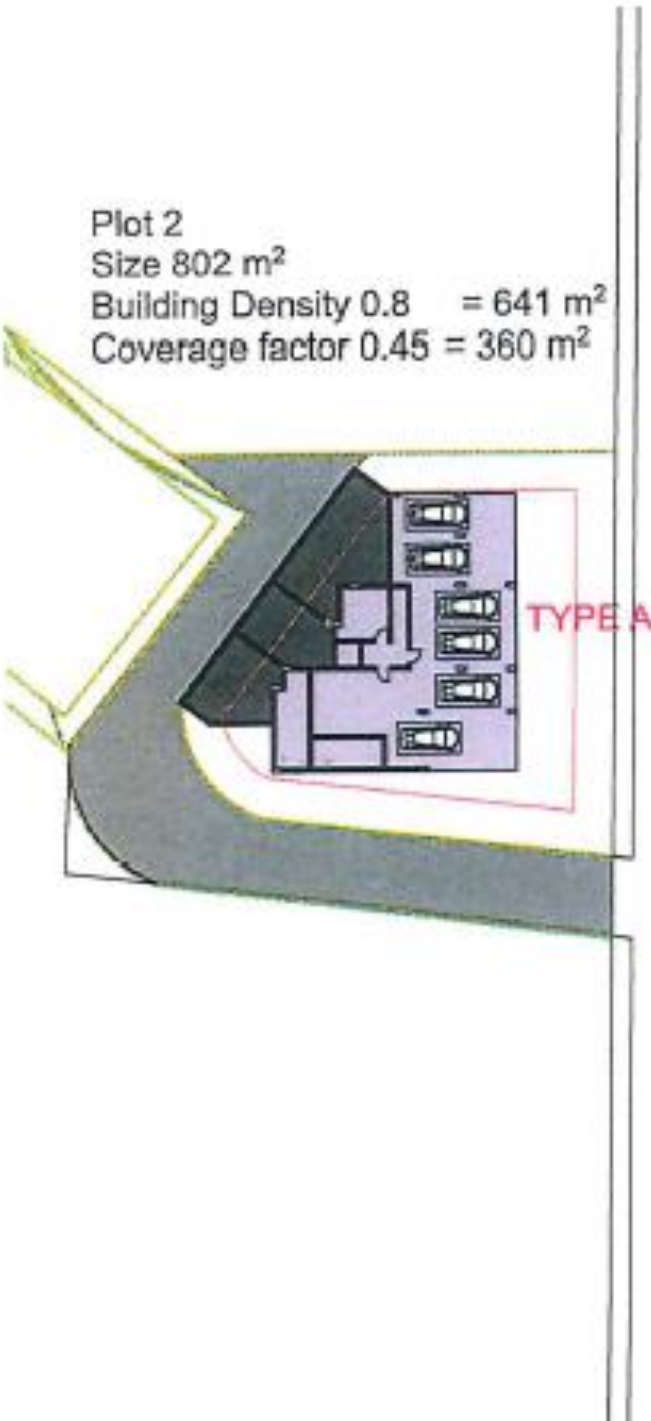
PICTURES



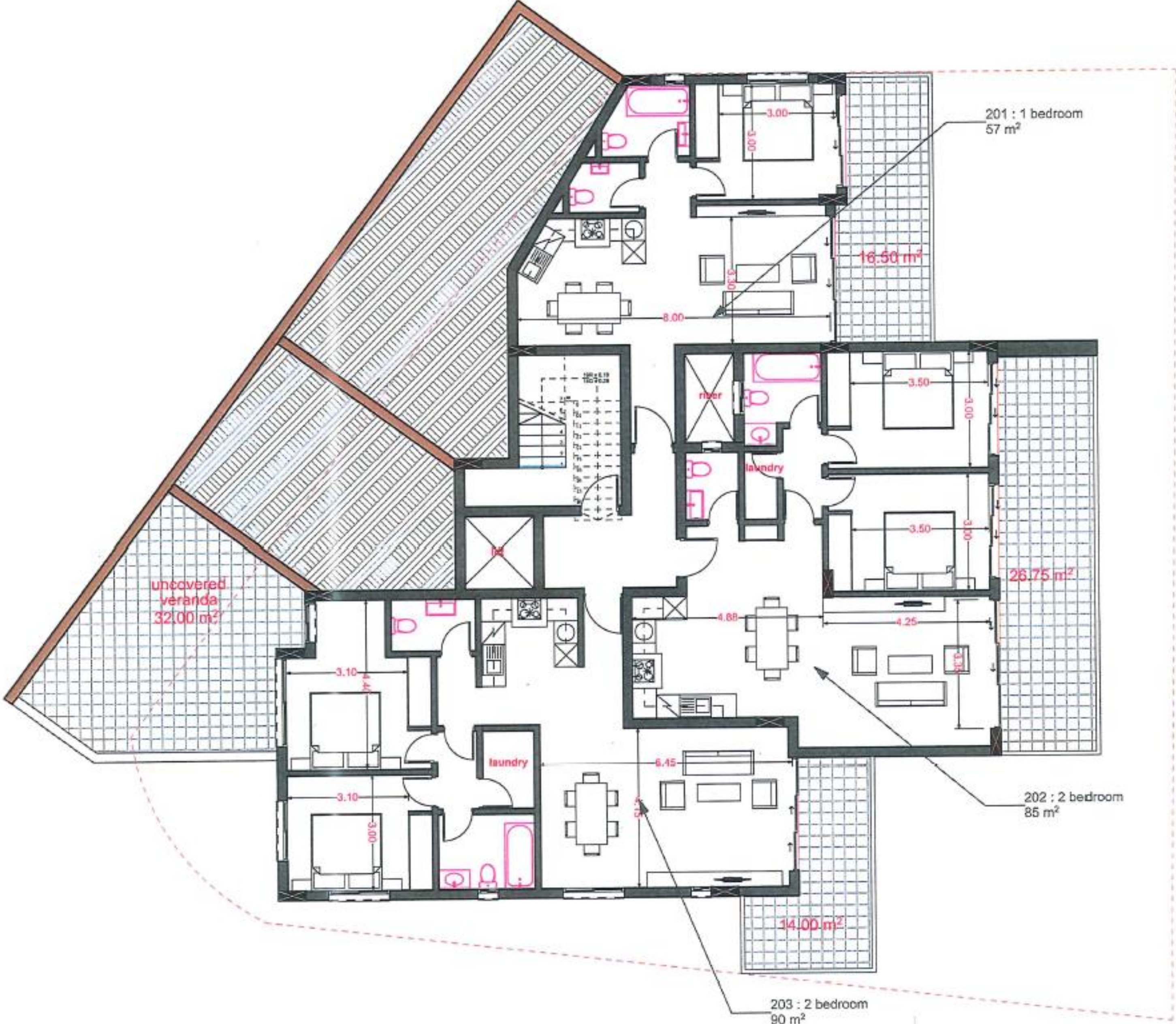
SITE PLAN

TYPE A			
1st Floor :	2 x 2 bedrooms	(90+85)	175m ²
	1 x 1 bedroom	(57)	57m ²
2nd Floor :	2 x 2 bedrooms	(90+85)	175m ²
	1 x 1 bedroom	(57)	57m ²
3rd Floor :	1 x 3 bedrooms	(100)	100m ²
+common areas on all floors			78m ²
TOTAL			641 m ²

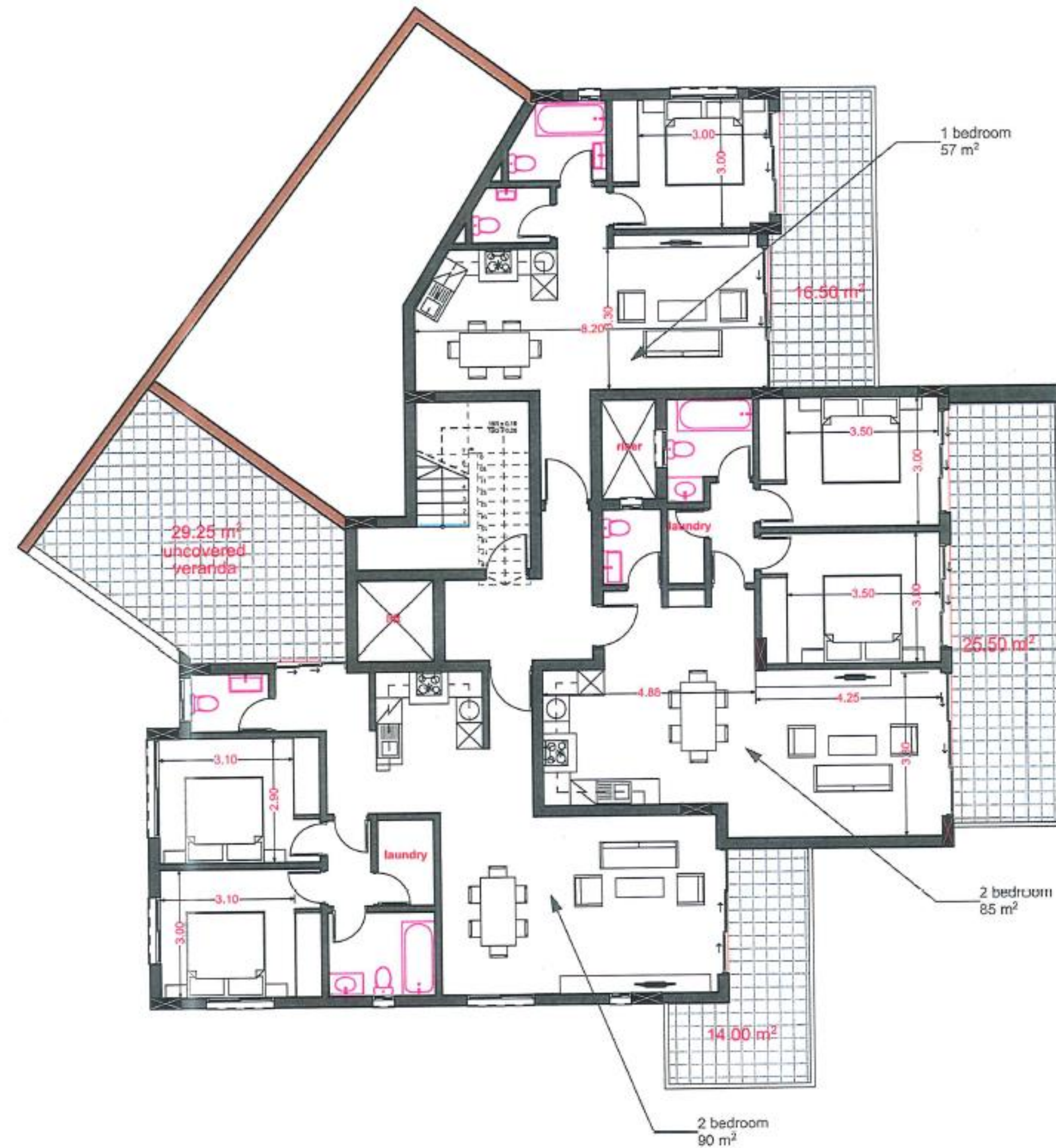
TYPE B			
1st Floor :	4 x 2 bedrooms	(82+84+79+82)	327m ²
	2 x 1 bedroom	(50+50)	100m ²
2nd Floor :	4 x 2 bedrooms	(82+84+79+82)	327m ²
	2 x 1 bedroom	(50+50)	100m ²
3rd Floor :	4 x 2 bedrooms	(82+84+79+82)	327m ²
	2 x 1 bedroom	(50+50)	100m ²
+common areas on all floors			100m ²
TOTAL			1381 m ²



PLAN OF TYPE A FIRST FLOOR



PLAN OF TYPE A SECOND FLOOR



INVESTMENT OFFER

Plot 1 Land Area	802 m ²
Plot 2 Land Area	5 207 m ²
Total Land Area:	6 009 m ²
1 Bedroom	20 apartments
2 Bedroom	40 apartments
3 Bedroom	1 apartment
Total:	61 Apartments
Total Saleable Area:	6 309 m ²

WELCOME TO CYPRUS

