



SOTREL

— DEVELOPMENTS —

*“Invest in Luxury,
Invest in Your Future”*



@sotrel_developments



Sotrel Developments



+357 96 95 99 61



info@sotrel.net



GRIGORI AFXENTIOU 7, 6023 LARNACA



Sotrel is excited to introduce a rare and exclusive opportunity to invest in premium off-plan apartments, located in the vibrant heart of Larnaca city, just steps away from the prestigious American Academy which will be ready by early 2026.

This residential building is 6 storeys high, consisting of 16 apartments; three on each floor, of one and two bedroom apartments, and two penthouses on the top floors each accompanied by a roof garden. Also, each apartment has one designated parking space.

- 10 Apartments of 1 Bedroom
- 5 Apartment of 2 Bedrooms
- 1 Apartment of 3 Bedroom



SOTREL
— DEVELOPMENTS —

📍 Few steps away from American Academy 🏫

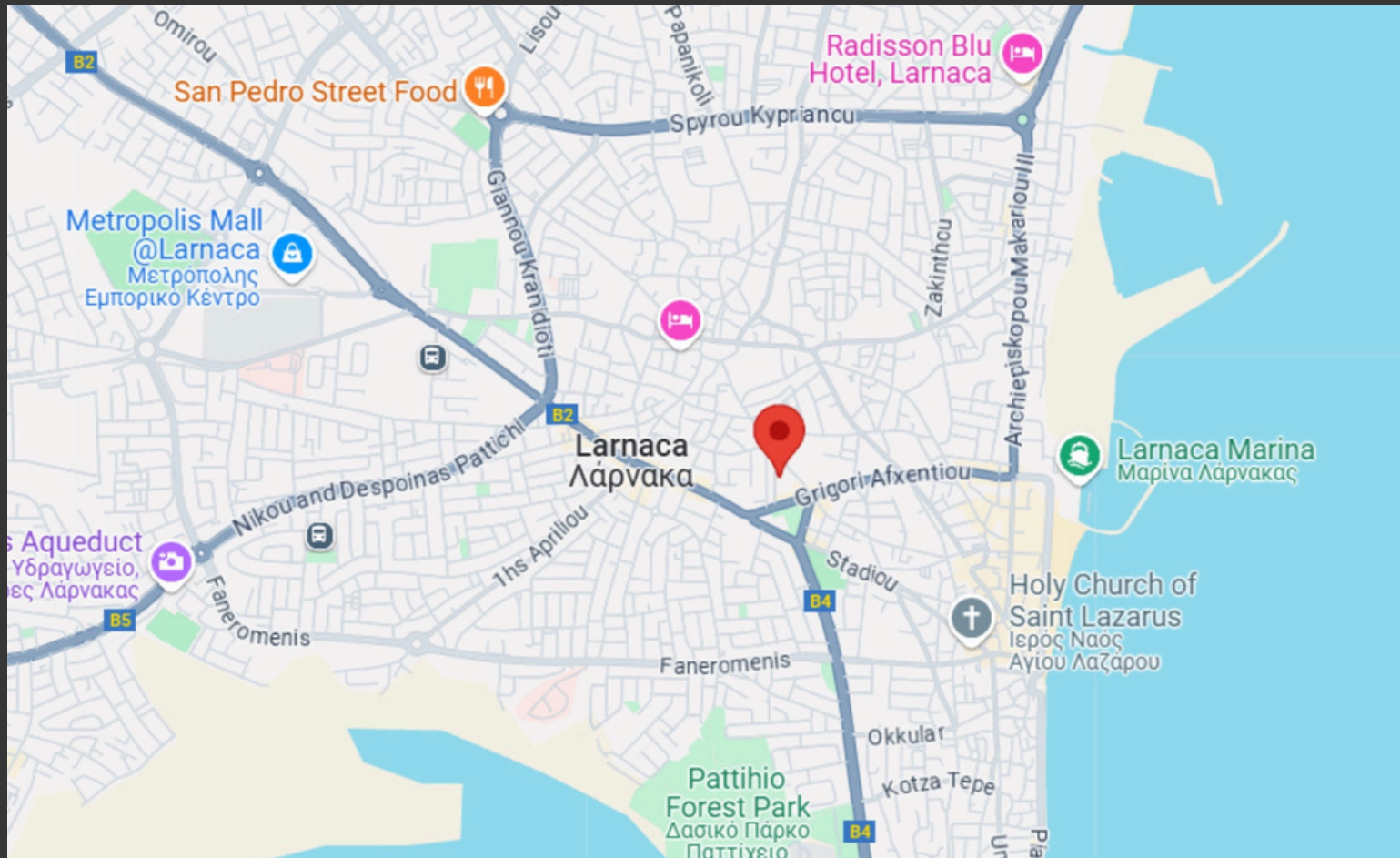
📍 3 km to Metropolis Mall 🏬

📍 7 km to Larnaca International Airport ✈️

📍 3 km to Larnaca Main Harbour 🚢

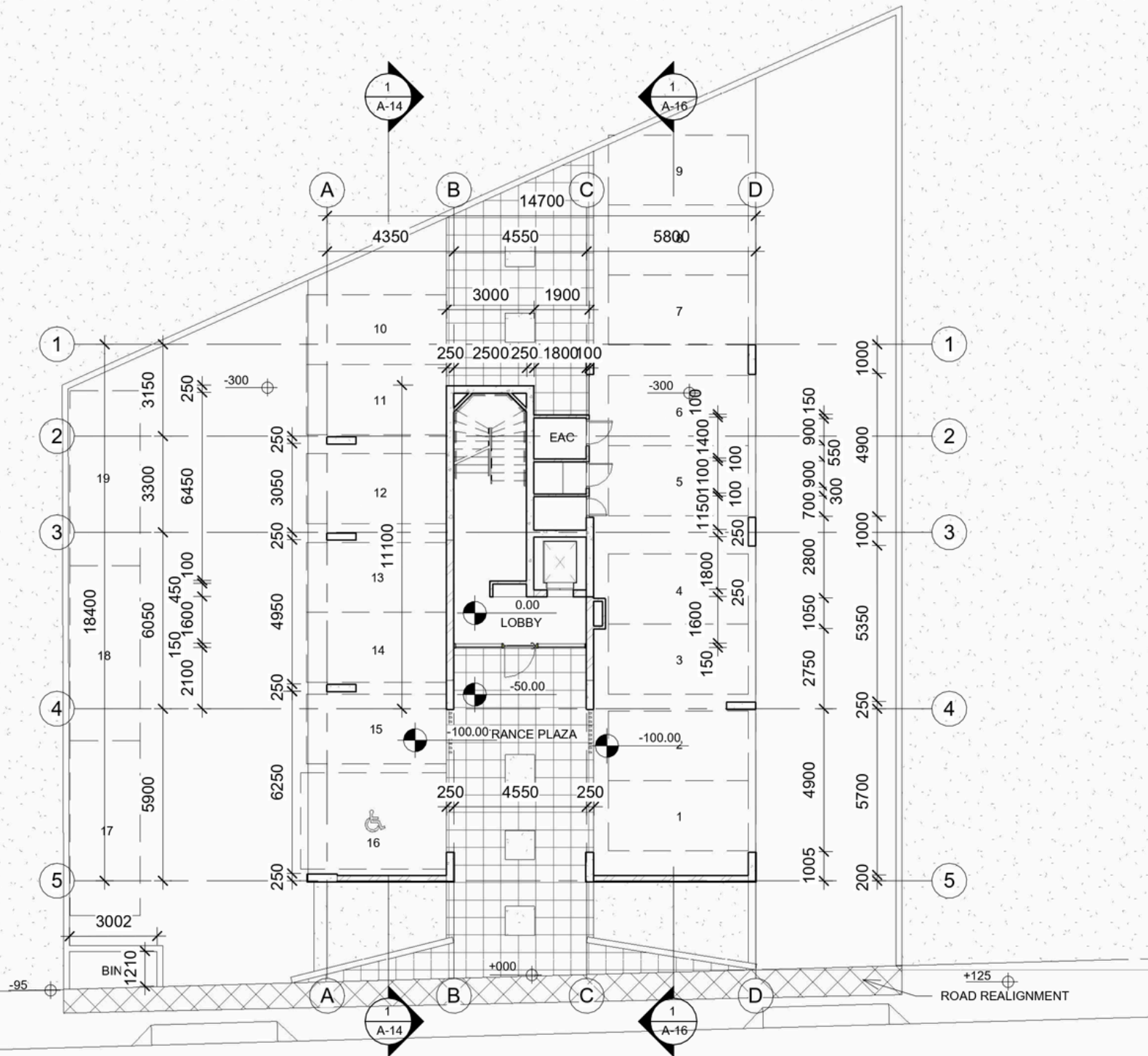
📍 1 km to Finikoudes Beach 🏖️

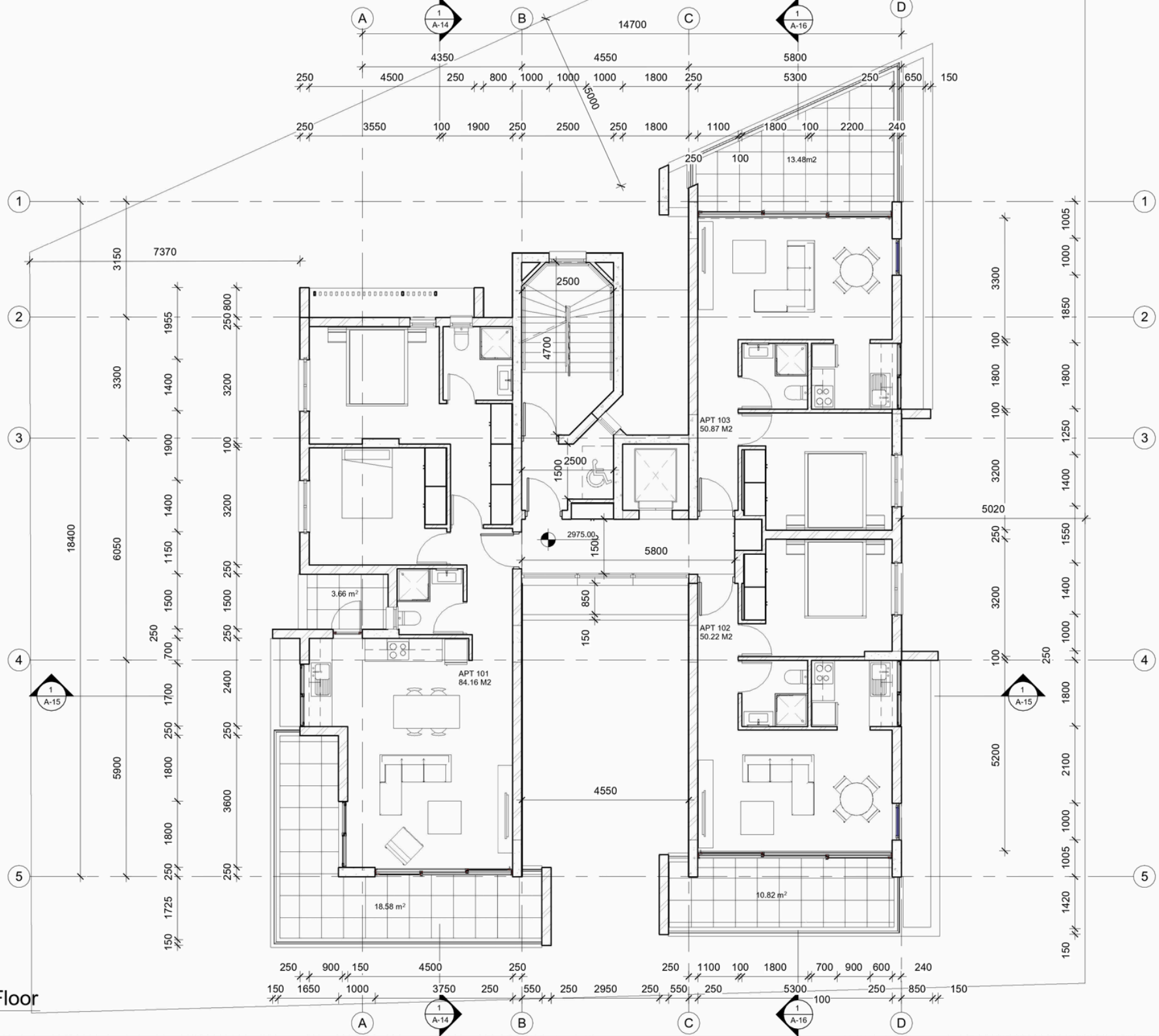
📍 2 km to Larnaca General Hospital 🏥



📍 William Weir 10, 6010 Larnaca

| APARTMENT | BEDROOM | BATHROOM | INTERIOR | VERANDA 1 | VERANDA 2 | ROOF GARDEN | PRICE |
|-----------|---------|----------|--------------------|----------------------|------------------|-------------------|-------------|
| 101 | 2 | 2 | 85 m ² | 18 m ² | 4 m ² | - | €308,000.00 |
| 102 | 1 | 1 | 50 m ² | 11 m ² | - | - | €181,500.00 |
| 103 | 1 | 1 | 51 m ² | 13 m ² | - | - | €190,426.23 |
| 201 | 2 | 2 | 85 m ² | 18 m ² | 4 m ² | - | €319,000.00 |
| 202 | 1 | 1 | 50 m ² | 11 m ² | - | - | €192,500.00 |
| 203 | 1 | 1 | 51 m ² | 13.21 m ² | - | - | €201,426.23 |
| 301 | 2 | 2 | 85 m ² | 18 m ² | 4 m ² | - | €330,000.00 |
| 302 | 1 | 1 | 50 m ² | 11 m ² | - | - | €203,500.00 |
| 303 | 1 | 1 | 51 m ² | 13 m ² | - | - | €212,426.23 |
| 401 | 2 | 2 | 85 m ² | 18 m ² | 4 m ² | - | €341,000.00 |
| 402 | 1 | 1 | 50 m ² | 11 m ² | - | - | €214,500.00 |
| 403 | 1 | 1 | 51 m ² | 13 m ² | - | - | €223,426.23 |
| 501 | 2 | 2 | 85 m ² | 17 m ² | 4 m ² | 58 m ² | €440,000.00 |
| 502 | 1 | 1 | 50 m ² | 11 m ² | - | - | €225,500.00 |
| 503 | 1 | 1 | 51 m ² | 13 m ² | - | - | €234,426.23 |
| 601 | 3 | 3.5 | 126 m ² | 15 m ² | 4 m ² | 54 m ² | €605,000.00 |



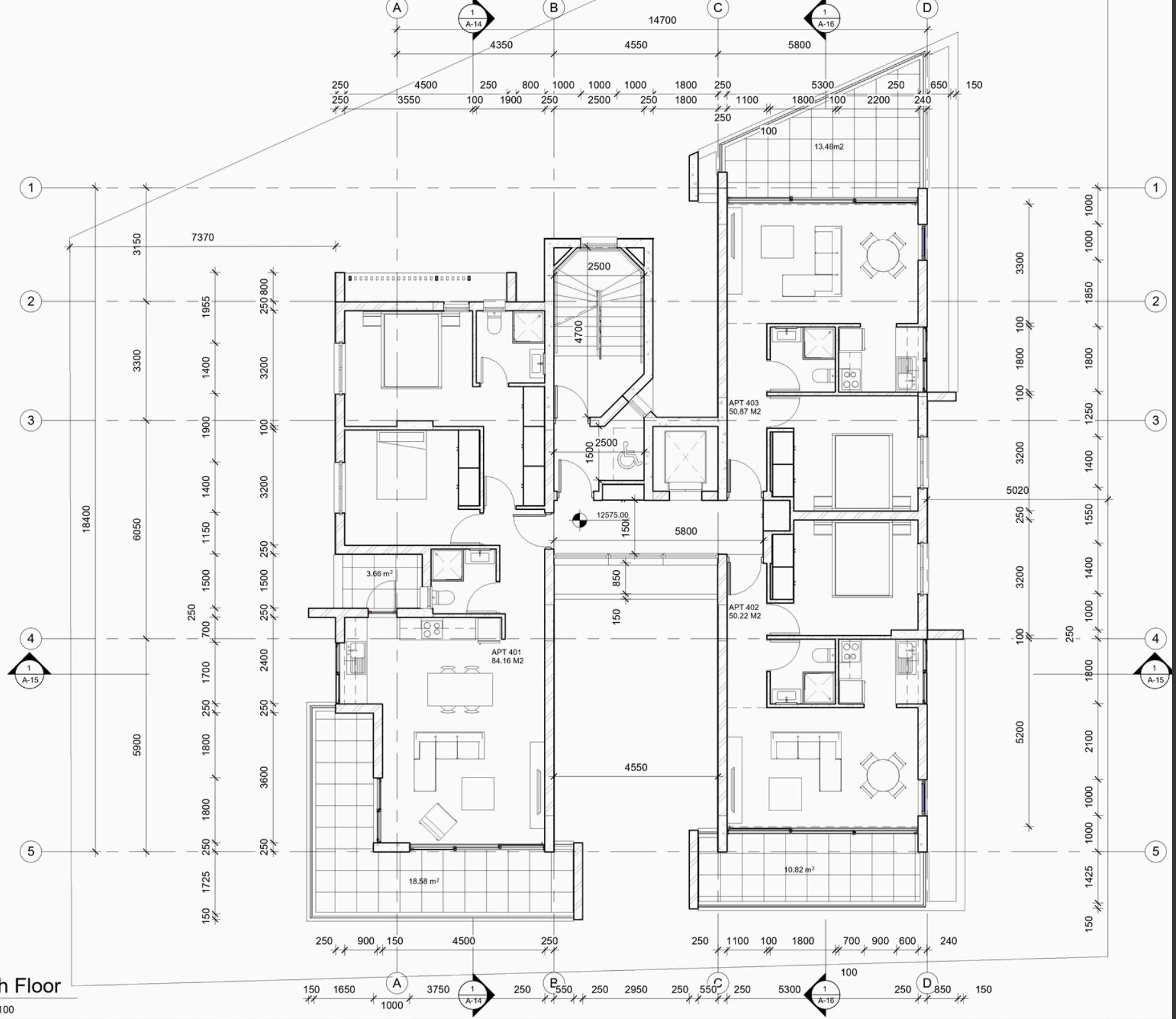


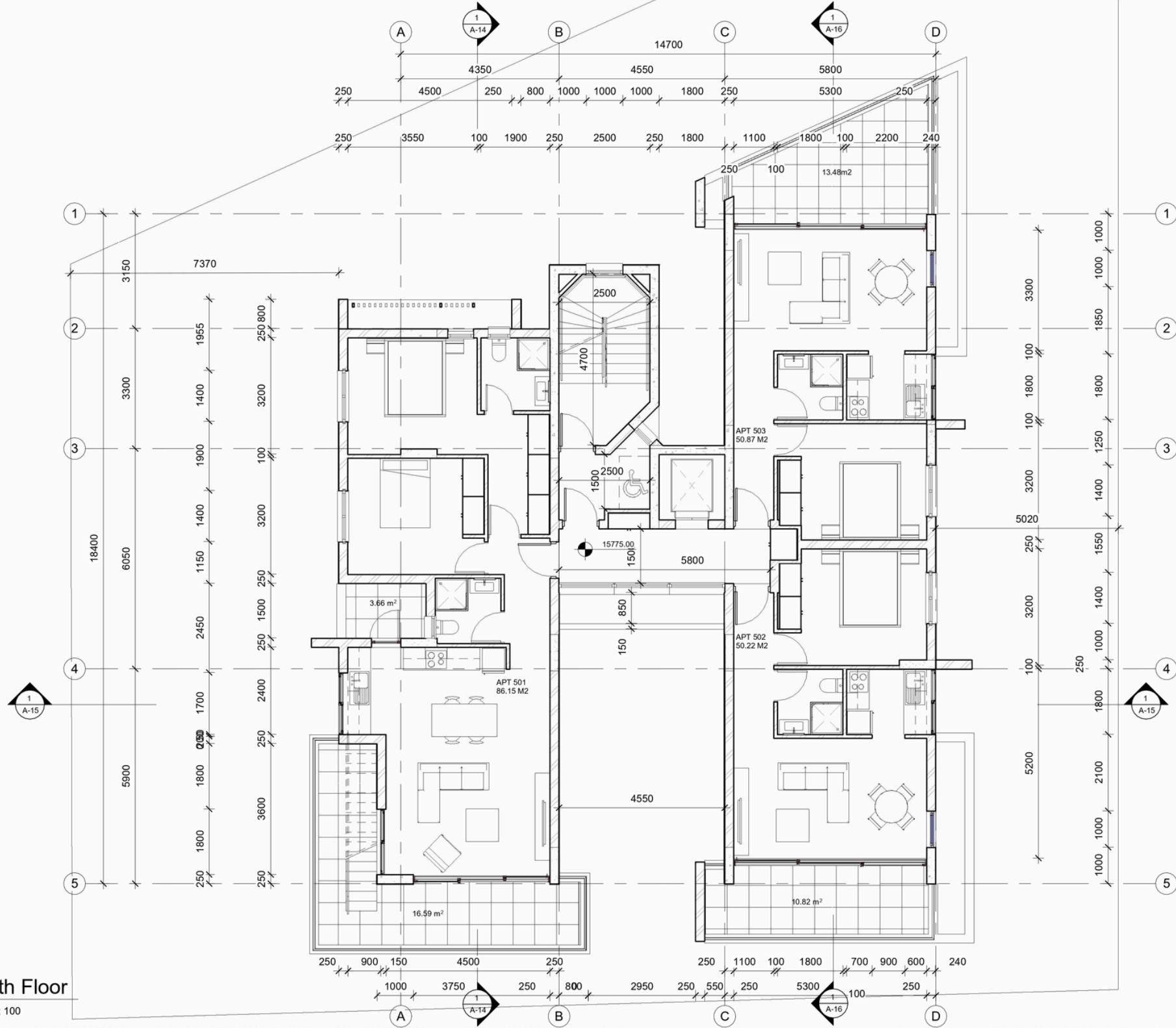
1 1st Floor
1 : 100



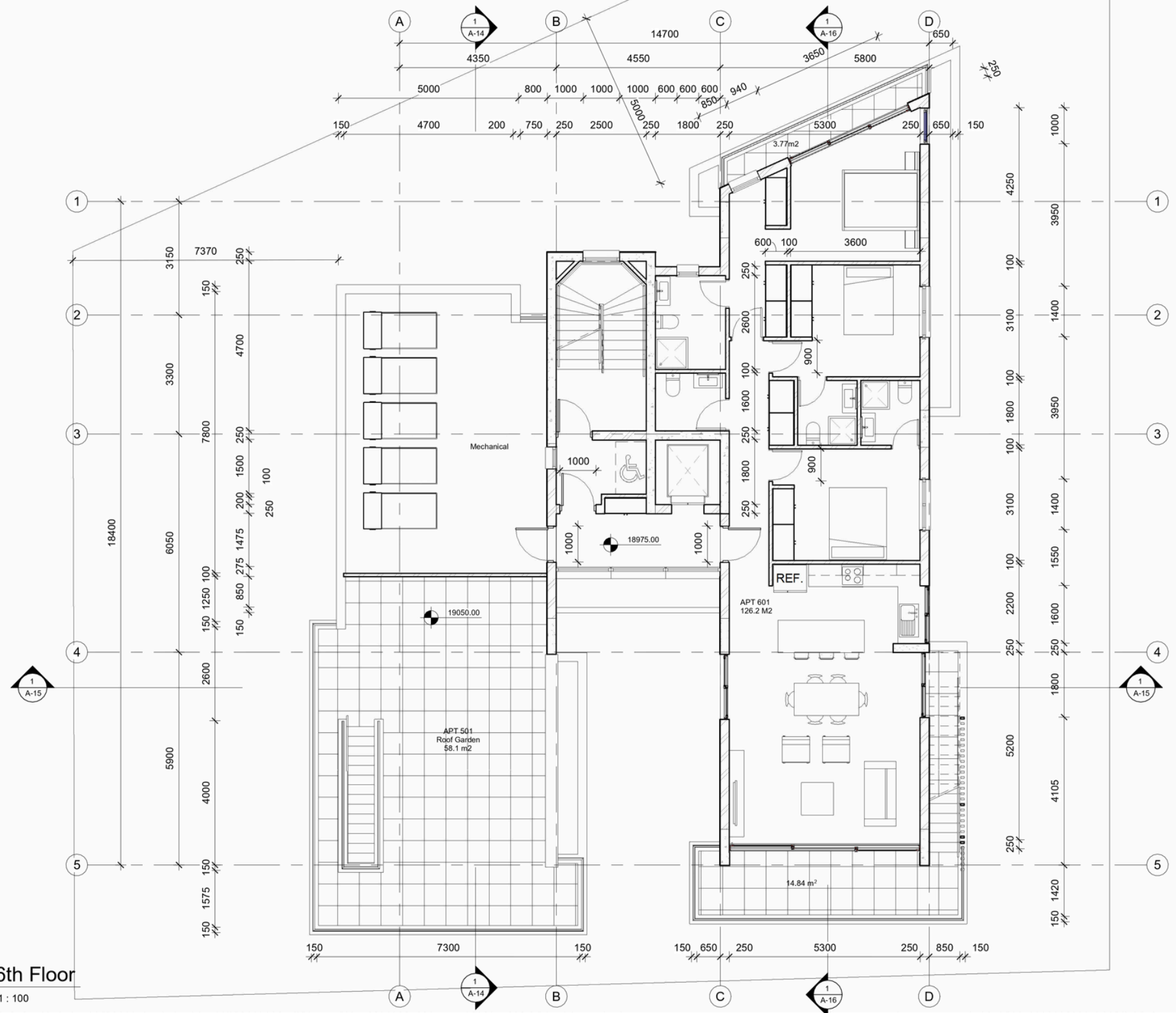
3rd Floor

1 : 100

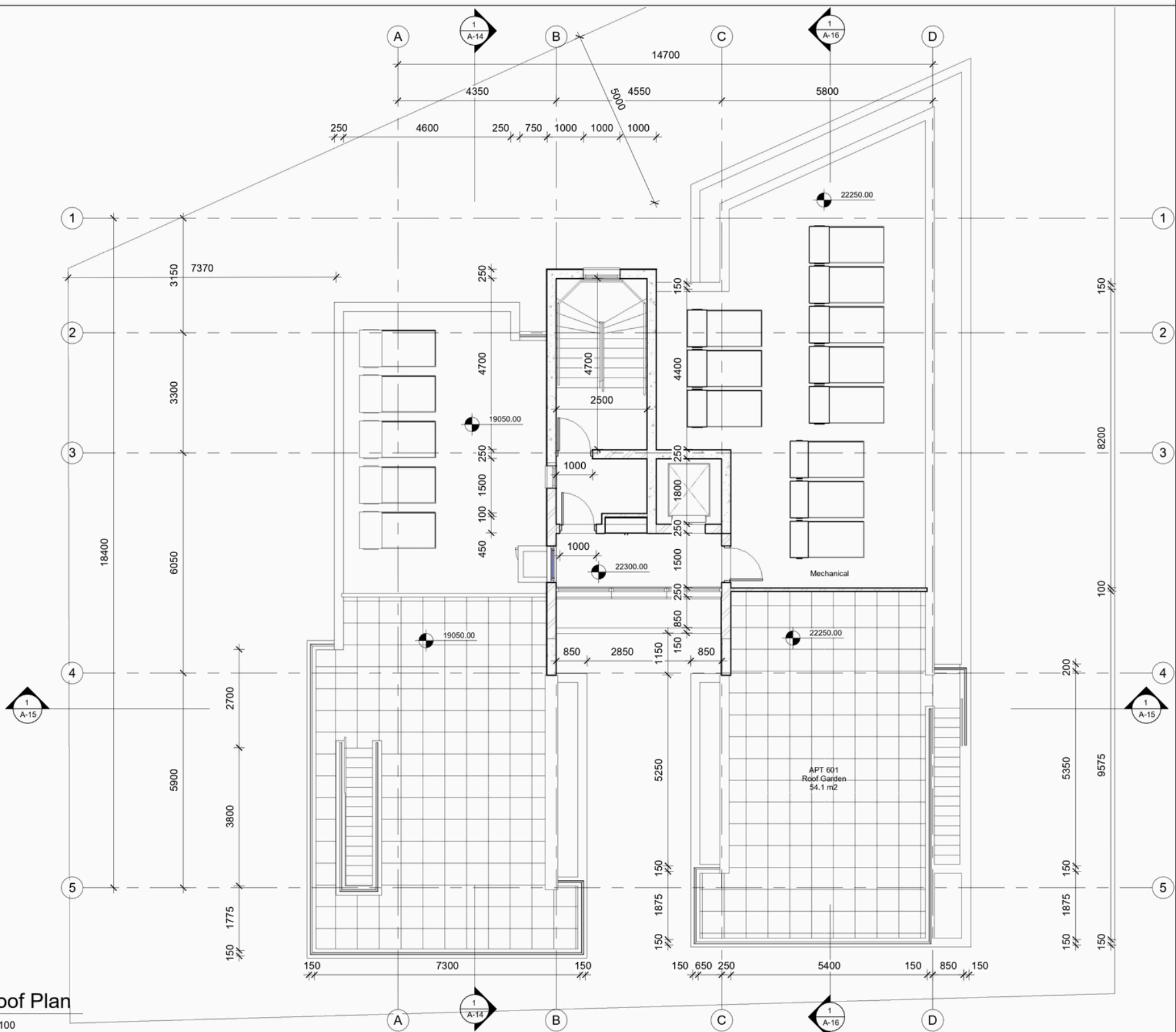




1 5th Floor
1 : 100



1 6th Floor
1 : 100



1

Roof Plan

1 : 100



At Sotrel Developments, we specialize in the construction of high-quality residential buildings in prime locations at the heart of the city of Larnaca. With over 25 years of experience in the real estate industry, we are dedicated to crafting exceptional properties that meet the highest standards of innovation and excellence and delivering residential buildings that exemplify superior services and innovative design, using only the highest quality materials to ensure longevity and aesthetic appeal.

Whether you're looking for a place to call home or a valuable addition to your real estate portfolio, this project offers the best of both worlds—luxury living and solid financial returns.



SOTREL
— DEVELOPMENTS —

Address: Grigori Afxentou 9 - Francis Court - Shop 7B - 6301 - Larnaca, Cyprus

Telephone: +357 96 959961 | Email: info@sotrel.net

Visit our website for more of our projects! <https://sotrel-ltd.com/en>