

MAYFAIR

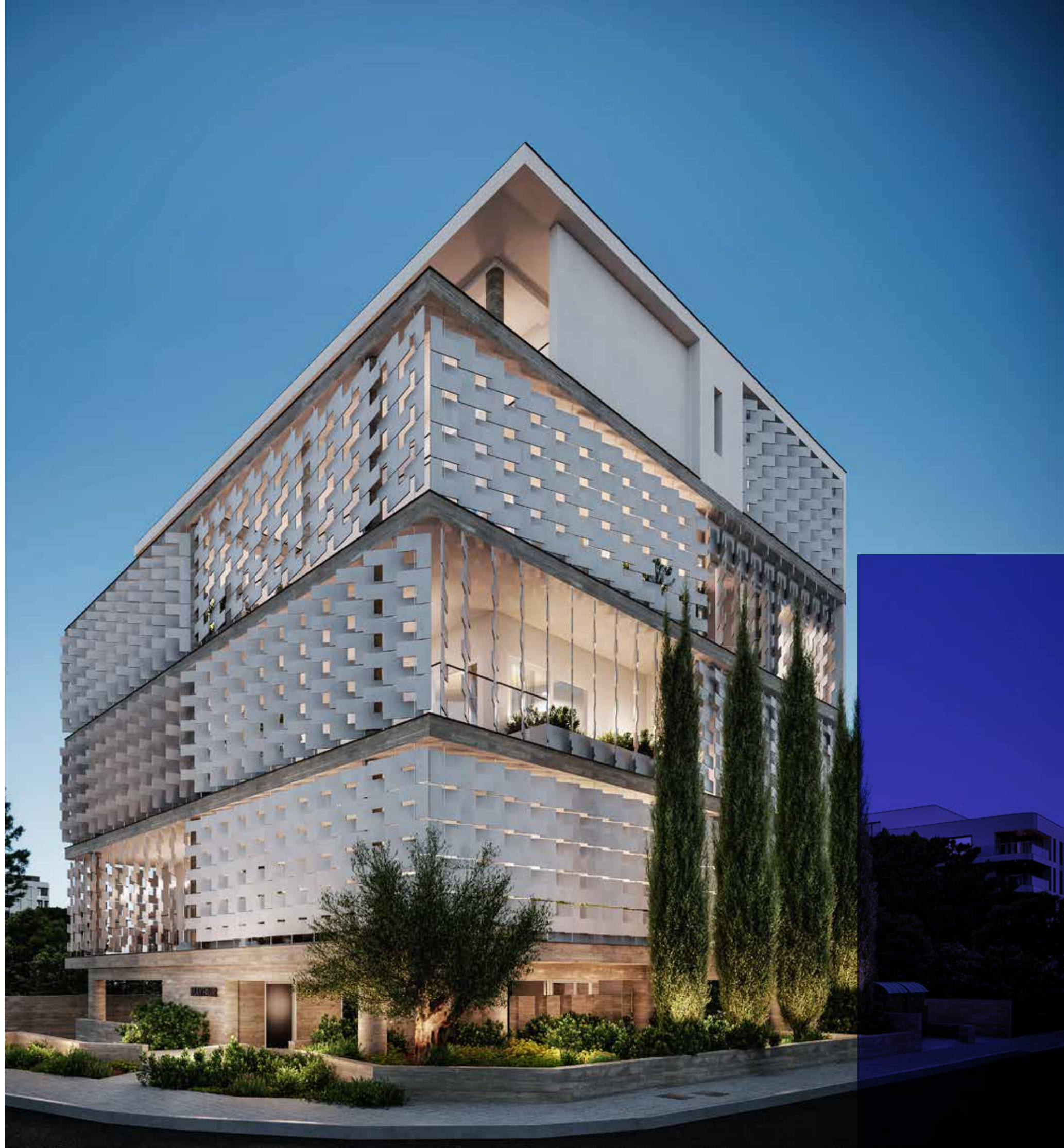






MAYFAIR

LUXURIOUS URBAN LIVING IN
THE HEART OF PAPHOS



AGG

LUXURY HOMES

CRAFTED FOR COMFORT. DESIGNED FOR LIFE.

At AGG Luxury Homes Ltd, we create more than residences - we build environments where luxury meets functionality, and style meets comfort. Our latest development offers luxurious urban living in a prime central location of Paphos, ideal for those who value both elegance and convenience.

LIVE WHERE IT ALL COMES TOGETHER.

Area is one of the city's most connected and sought-after neighbourhoods, this exclusive project places you within moments of boutique shops, renowned restaurants, cultural attractions, and everyday essentials. Whether you are purchasing a home for your family, a holiday retreat, or a smart investment, this is the opportunity to live - and invest - in the best of Paphos.

Why AGG Luxury Homes:

- Leading developer known for precision, reliability, and excellence
- Premium finishes, contemporary design, and thoughtful layouts
- Modern energy-efficient construction
- Dedicated client support before, during, and after purchase

A SMART INVESTMENT IN LIFESTYLE

Cyprus remains one of the Mediterranean's most attractive property destinations. With increasing demand and limited supply in central areas, this project by AGG Luxury Homes offers exceptional value, enduring quality, and the lifestyle you have been looking for.

APARTMENT OVERVIEW

MAYFAIR has been thoughtfully designed to offer spacious layouts, quality finishes, and modern comforts. All units include covered parking, private storage, and access to premium construction standards, delivering the ultimate in luxurious urban living in the heart of Paphos.

Please note: Total covered area refers to internal living space plus verandas and does not include parking or storage areas.



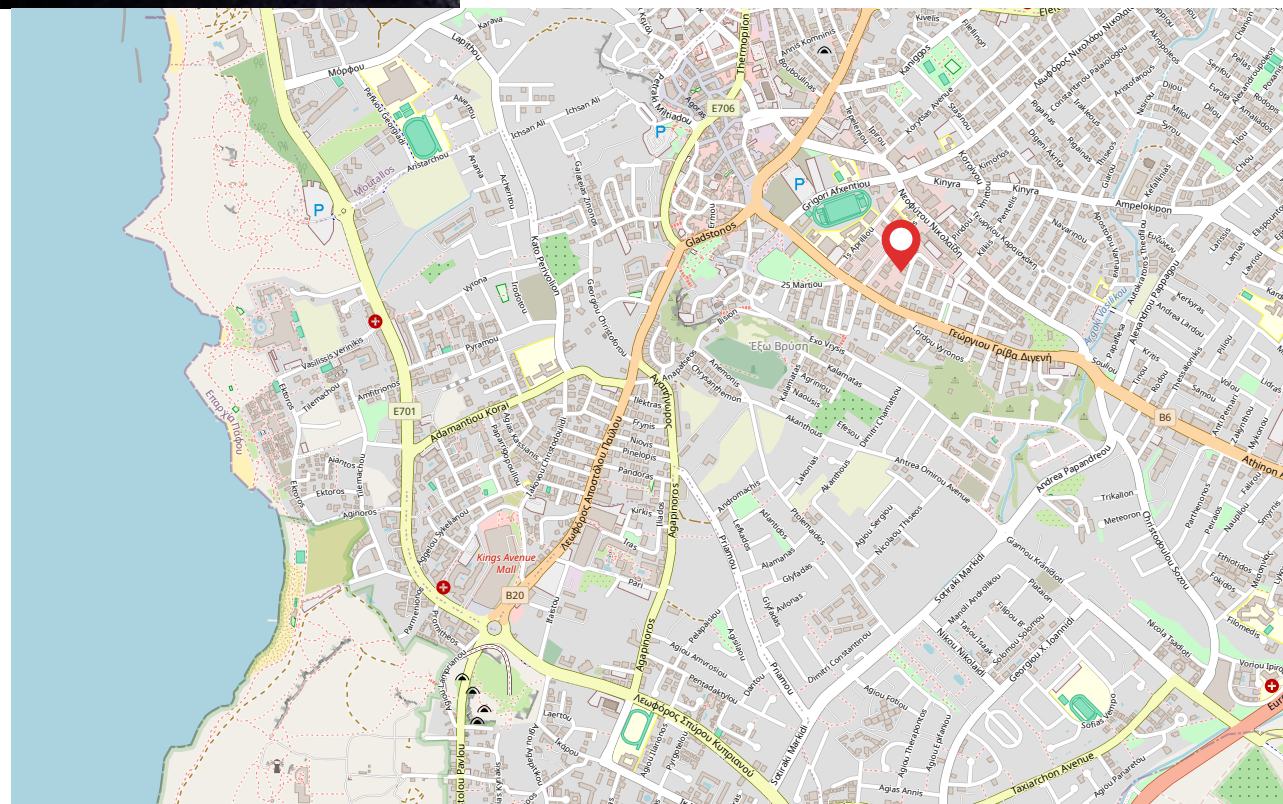


LOCATION

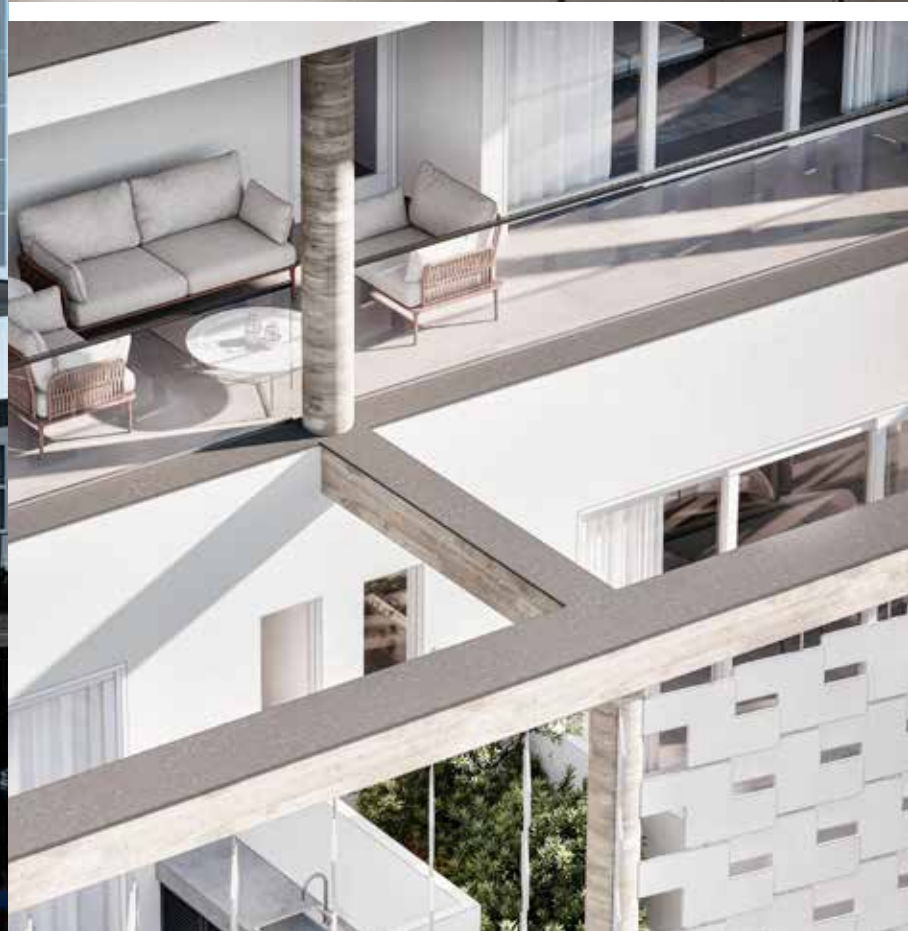
MAYFAIR is simply dummy text of the printing and typesetting industry. Lorem Ipsum has been the industry's standard dummy text ever since the 1500s, when an unknown printer took a galley of type and scrambled it to make a type specimen book. It has survived not only five centuries, but also the leap into electronic typesetting, remaining essentially unchanged. It was popularised in the 1960s with the release of Letraset sheets containing Lorem Ipsum passages, and more recently with desktop publishing software like Aldus PageMaker including versions of Lorem Ipsum.

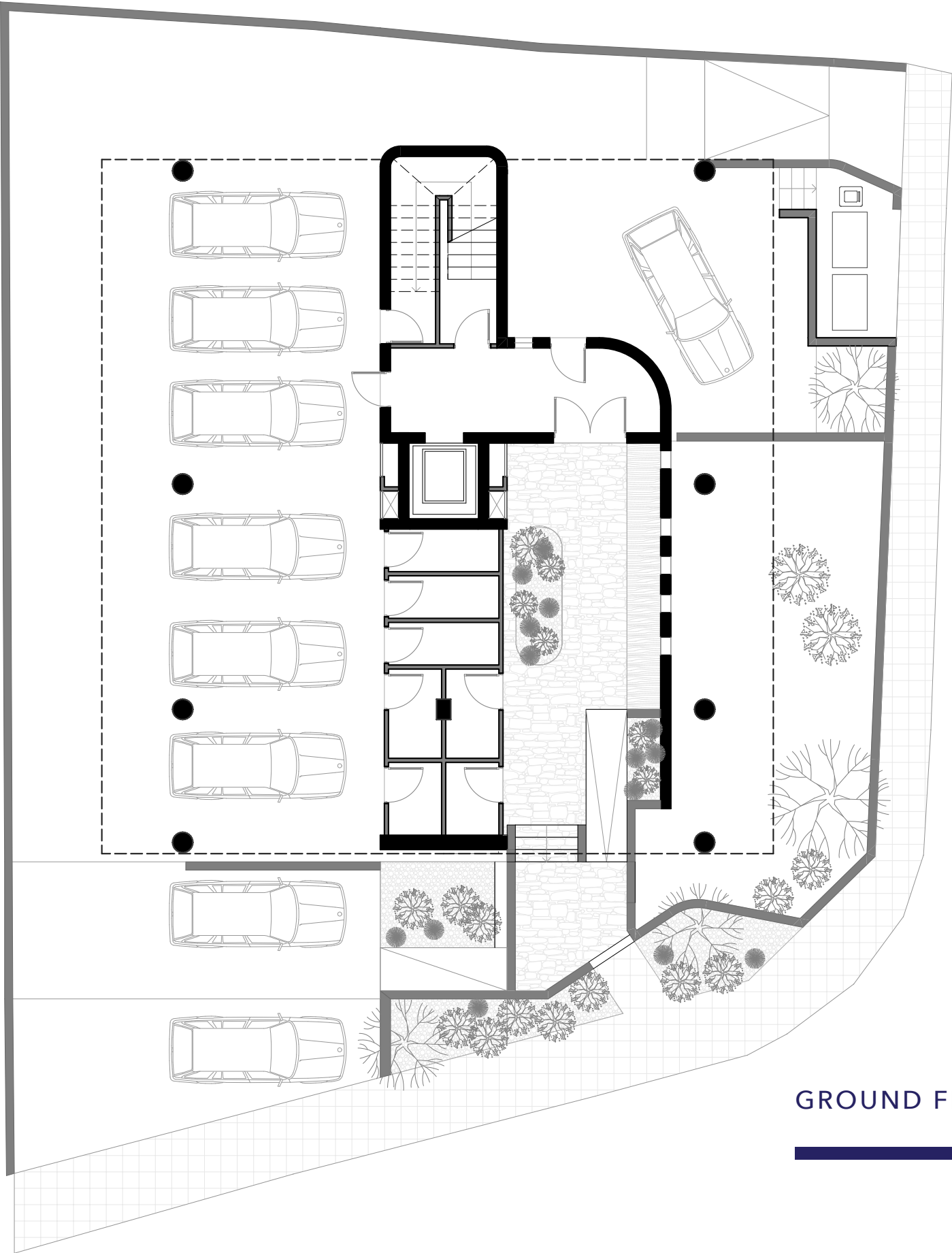
NEARBY

- Distance to the sea and promenade - 400m
- Distance to the Kings Avenue Mall - 1.5km
- Distance to the Old Town Centre - 1.5km
- Distance to the Aspire Private British School - 300m
- Distance to the supermarket - 300m
- Distance to the Venus Sandy Beach - 500m
- Distance to the bus stop - 150m



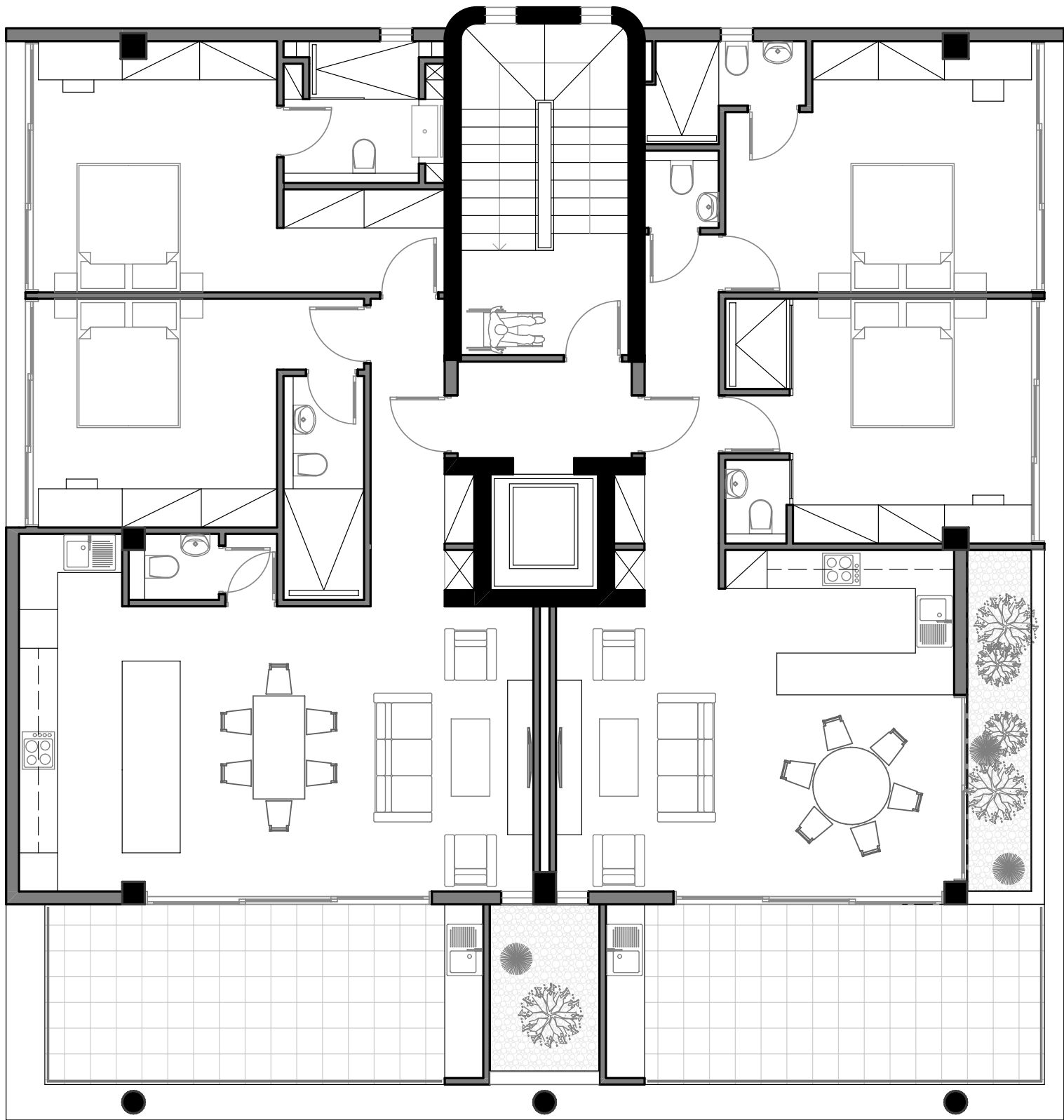


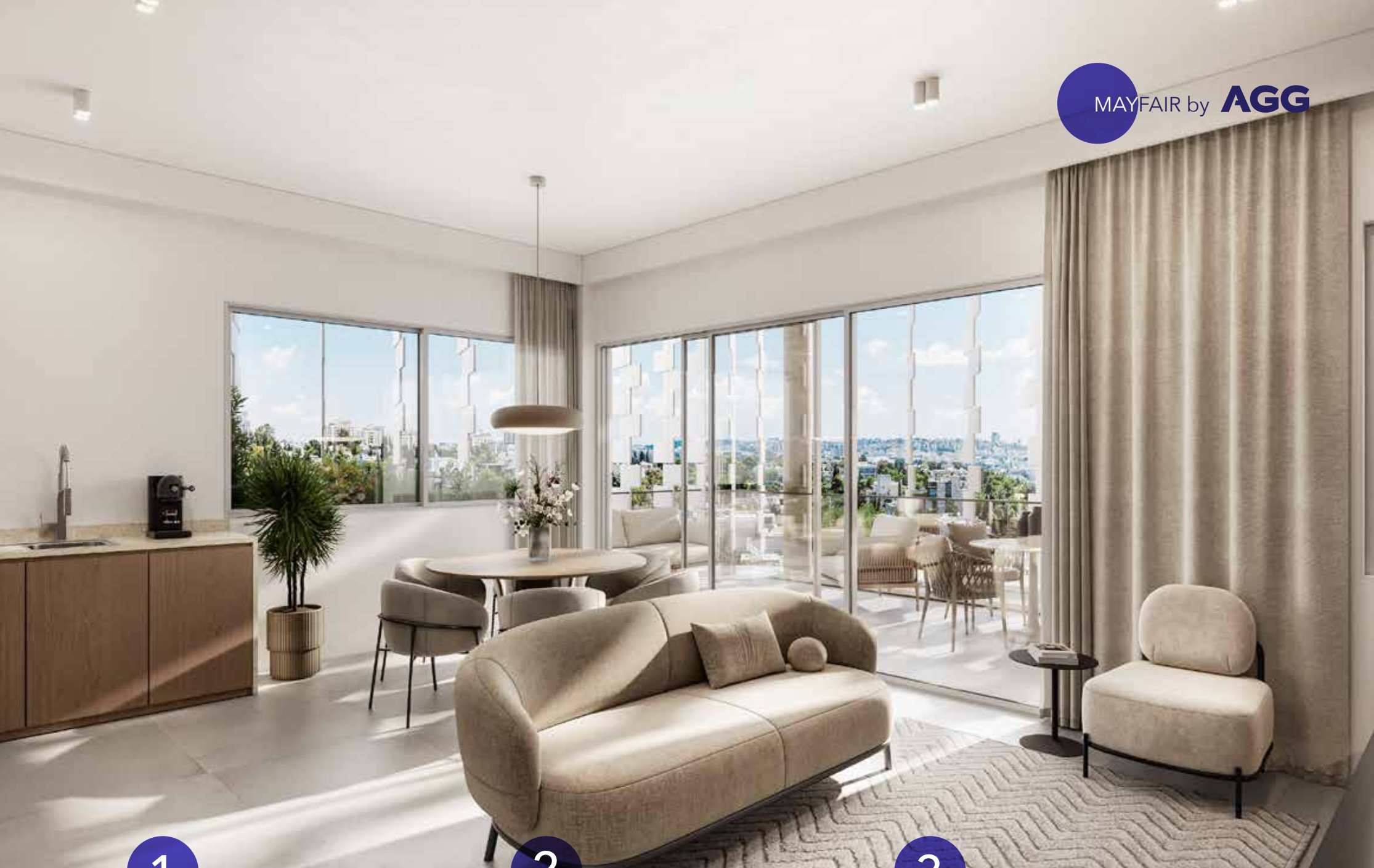




GROUND FLOOR

1-3 FLOOR





1

101 APARTMENT

2 BEDROOMS 2 BATHROOMS

LIVING AREA: 85 sqm

COVERED VERANDA: 19 sqm

STORE ROOM: 1

PARKING: 1

TOTAL COVERED AREA: 104 sqm

2

201 APARTMENT

2 BEDROOMS 2 BATHROOMS

LIVING AREA: 85 sqm

COVERED VERANDA: 19 sqm

STORE ROOM: 1

PARKING: 1

TOTAL COVERED AREA: 104 sqm

3

301 APARTMENT

2 BEDROOMS 2 BATHROOMS

LIVING AREA: 85 sqm

COVERED VERANDA: 19 sqm

STORE ROOM: 1

PARKING: 1

TOTAL COVERED AREA: 104 sqm

102 APARTMENT

2 BEDROOMS 2 BATHROOMS

LIVING AREA: 98 sqm

COVERED VERANDA: 19 sqm

STORE ROOM: 1

PARKING: 1

TOTAL COVERED AREA: 117 sqm

202 APARTMENT

2 BEDROOMS 2 BATHROOMS

LIVING AREA: 98 sqm

COVERED VERANDA: 19 sqm

STORE ROOM: 1

PARKING: 1

TOTAL COVERED AREA: 117 sqm

302 APARTMENT

2 BEDROOMS 2 BATHROOMS

LIVING AREA: 98 sqm

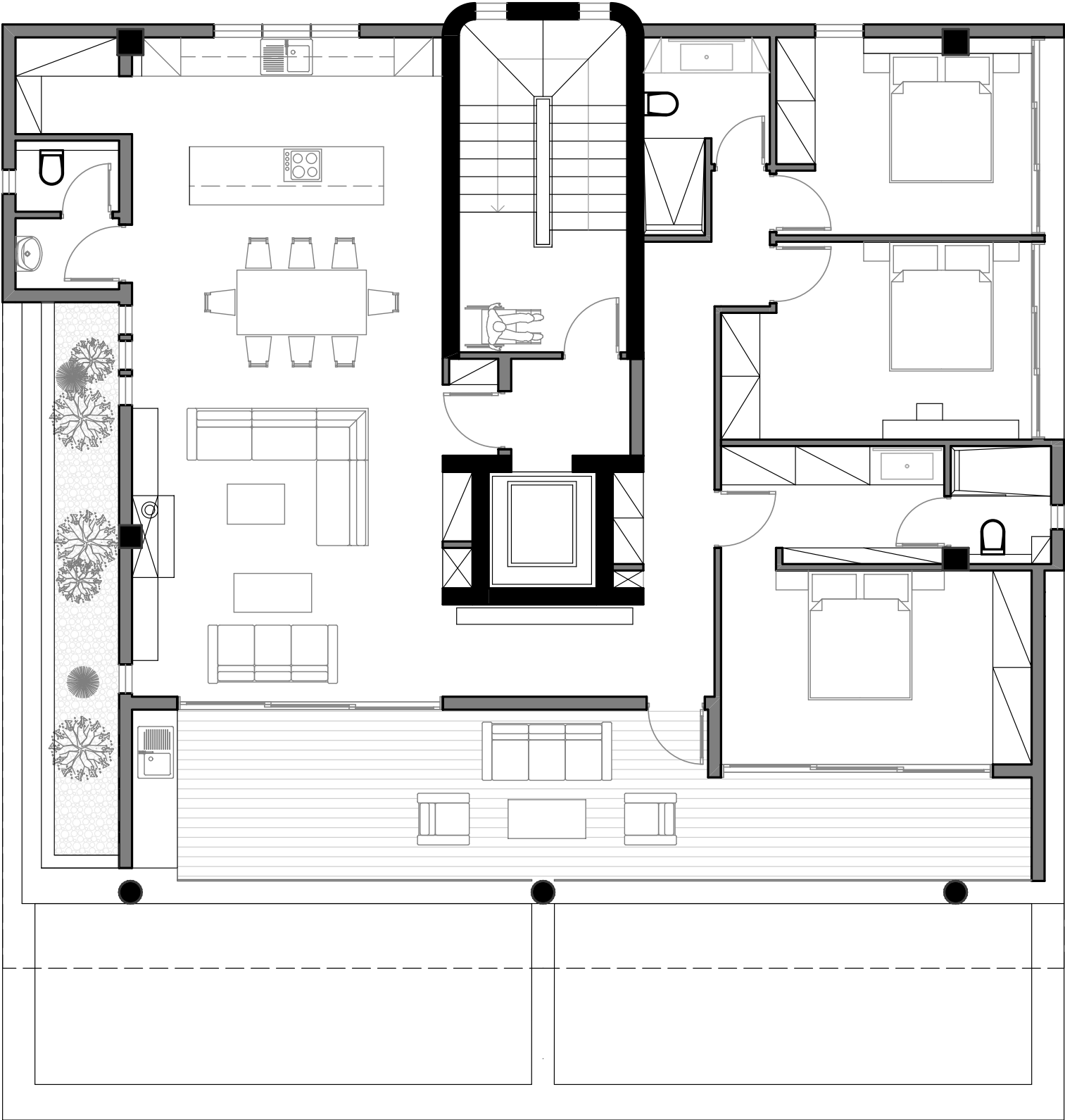
COVERED VERANDA: 19 sqm

STORE ROOM: 1

PARKING: 1

TOTAL COVERED AREA: 117 sqm

4th FLOOR





4

401 APARTMENT

3 BEDROOMS 3 BATHROOMS

LIVING AREA: 137 sqm

COVERED VERANDA: 32 sqm

STORE ROOM: 1

PARKING: 1

TOTAL COVERED AREA: 169 sqm

MAYFAIR

GENERAL PALETTE



SPECIFICATIONS

ENERGY PERFORMANCE A



BUILT-IN KITCHEN

- Custom made design from Italy or local carpenter
- Techno granite worktop and backsplash
- Single sink formed seamlessly with work surface
- Provisions for hob, oven, re-circulating hood, washing machine, dishwasher, refrigerator. Appliances are not included

MIXERS & ACCESSORIES

- Bath and Shower mixers
- Wash basin mixer
- Chrome bathroom/shower accessories including towel hook, paper roll holder and provision for heated towel rail.
- Kitchen sink mixer 3 way

SANITARY WARE

- Bathtub
- Custom made shower tray with anti-slip treaded tiles
- Shower screen
- Wall-mounted WC pan with concealed cistern
- Washbasin

HEATING AND COOLING SYSTEMS


- Concealed units in all areas (VRV System)
- Underfloor Heating

BUILT-IN BEDROOM WARDROBES

- Custom made design from Italy or local carpenter



HEAD OFFICE 4, 25th March Street, 8047 Paphos, Cyprus \ **T** (+357) 26 818 680 \ **E** info@agcyprus.com

 [agg_luxuryhomes](https://www.instagram.com/agg_luxuryhomes) \ www.agcyprus.com

Freephone: 8000 63 63