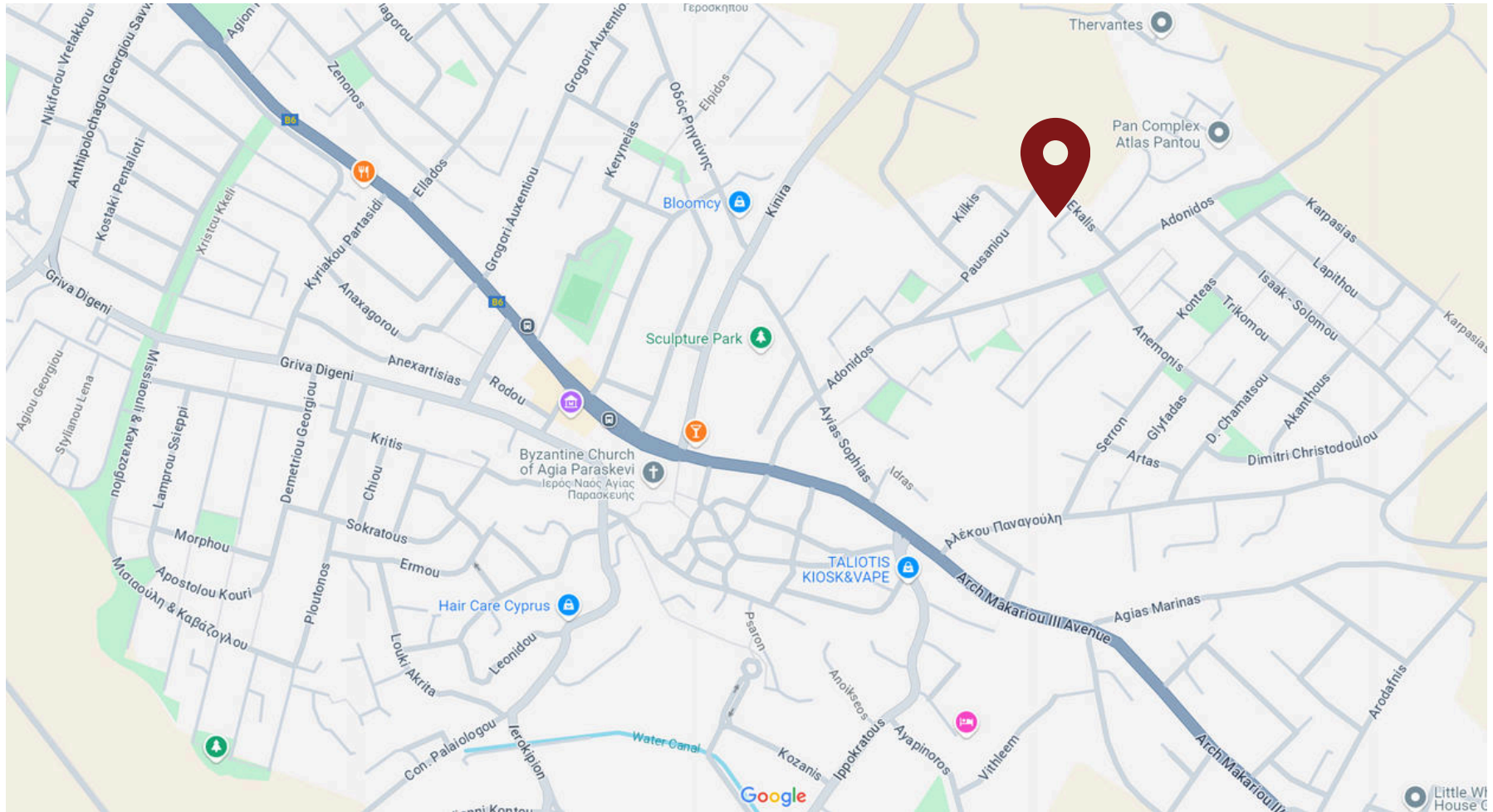


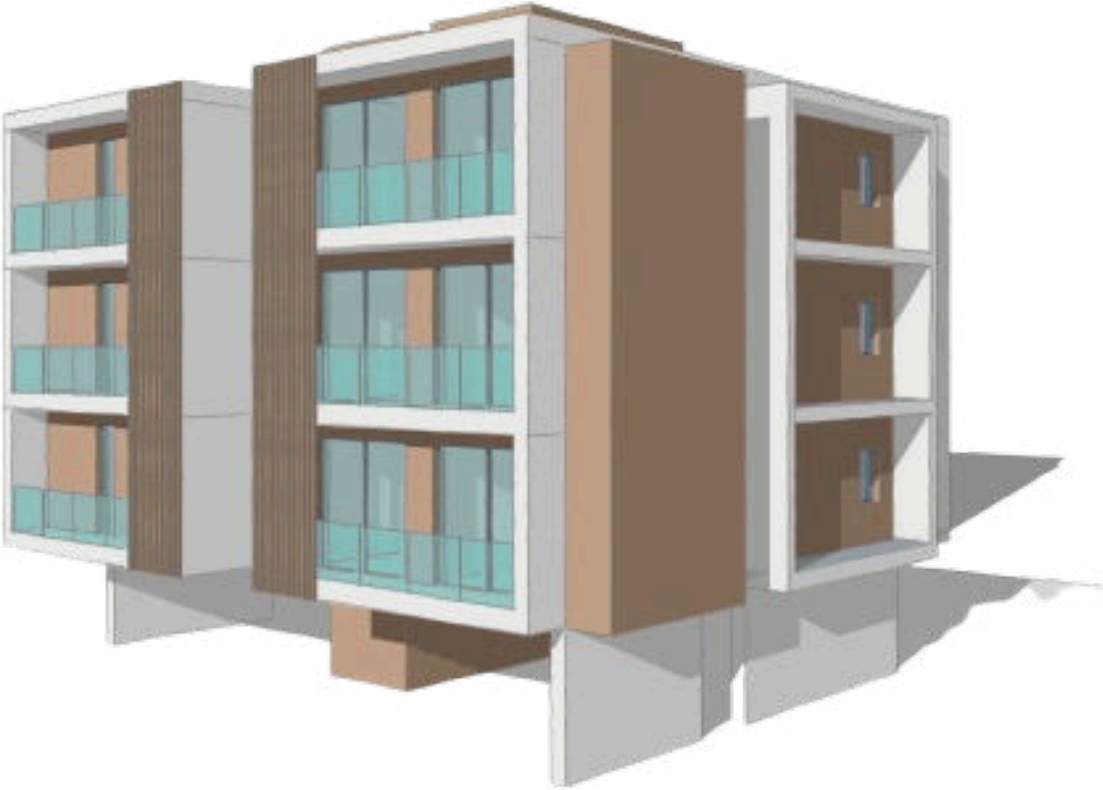


PENTELIS

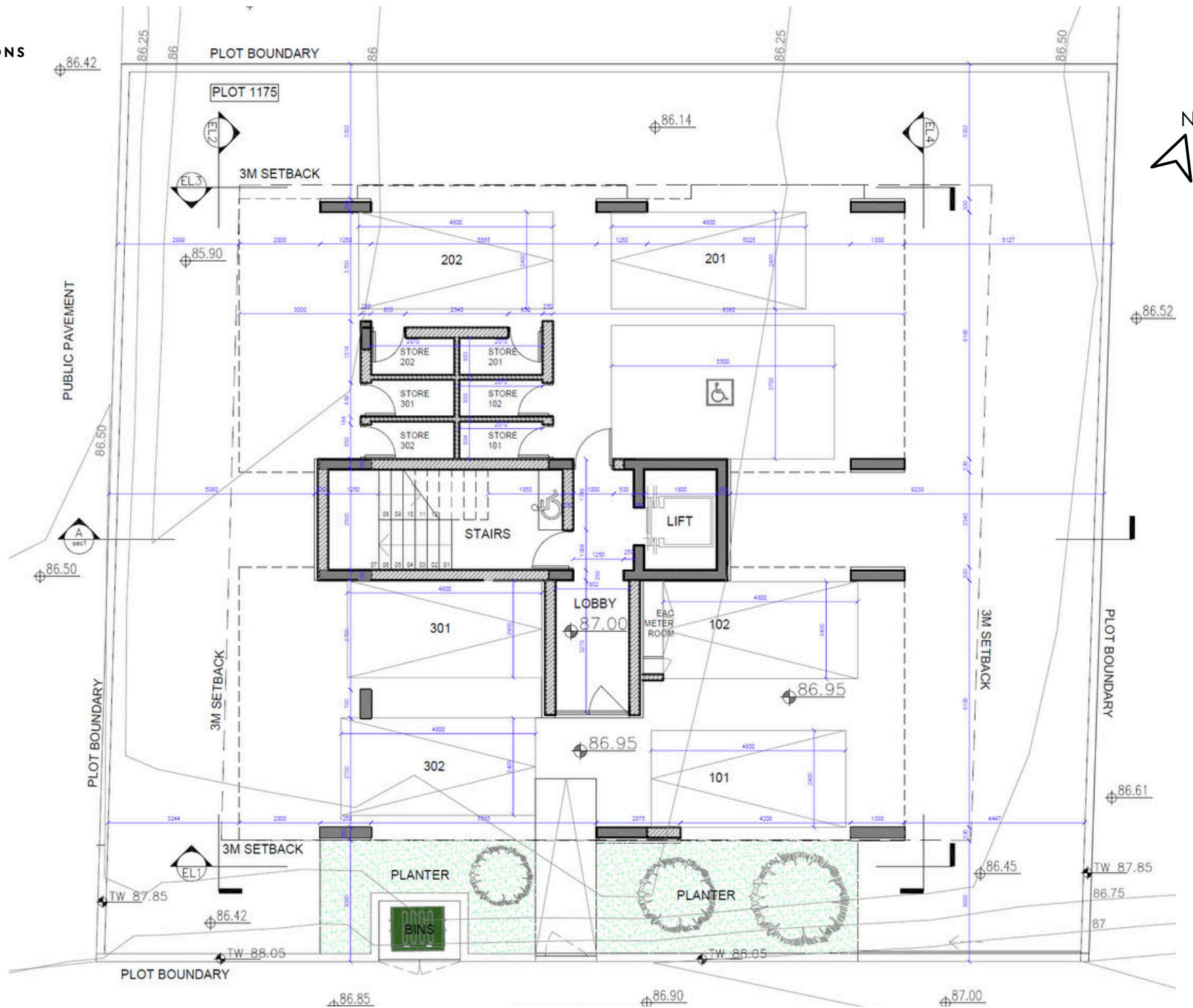
GREEN



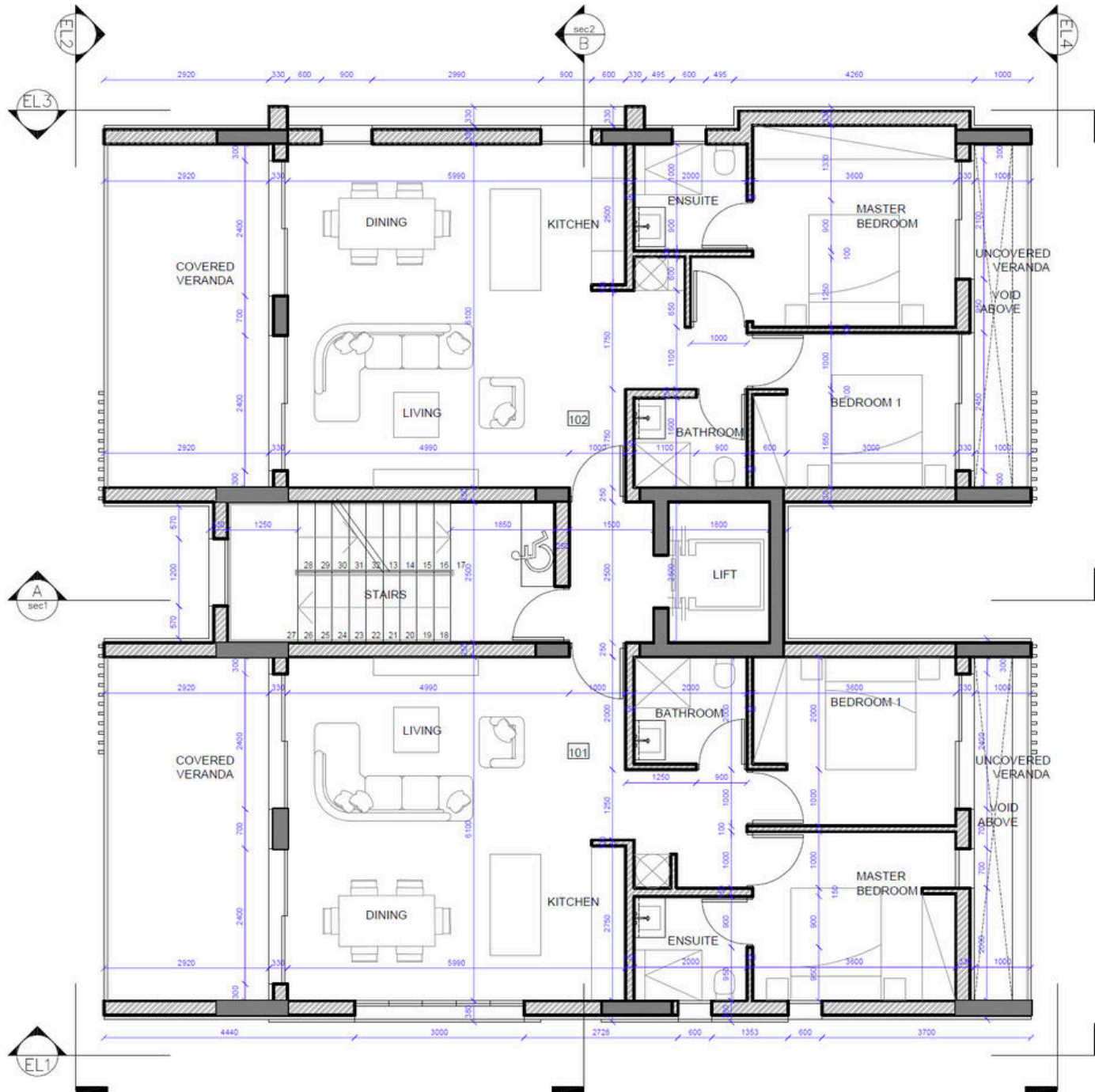
LOCATION
PENTELIS STREET
GEROSKIPOU, PAPHOS
[HTTPS://MAPS.APP.GOO.GL/XBXNMLGUNVQVFZS37](https://maps.app.goo.gl/XBXNMLGUNVQVFZS37)



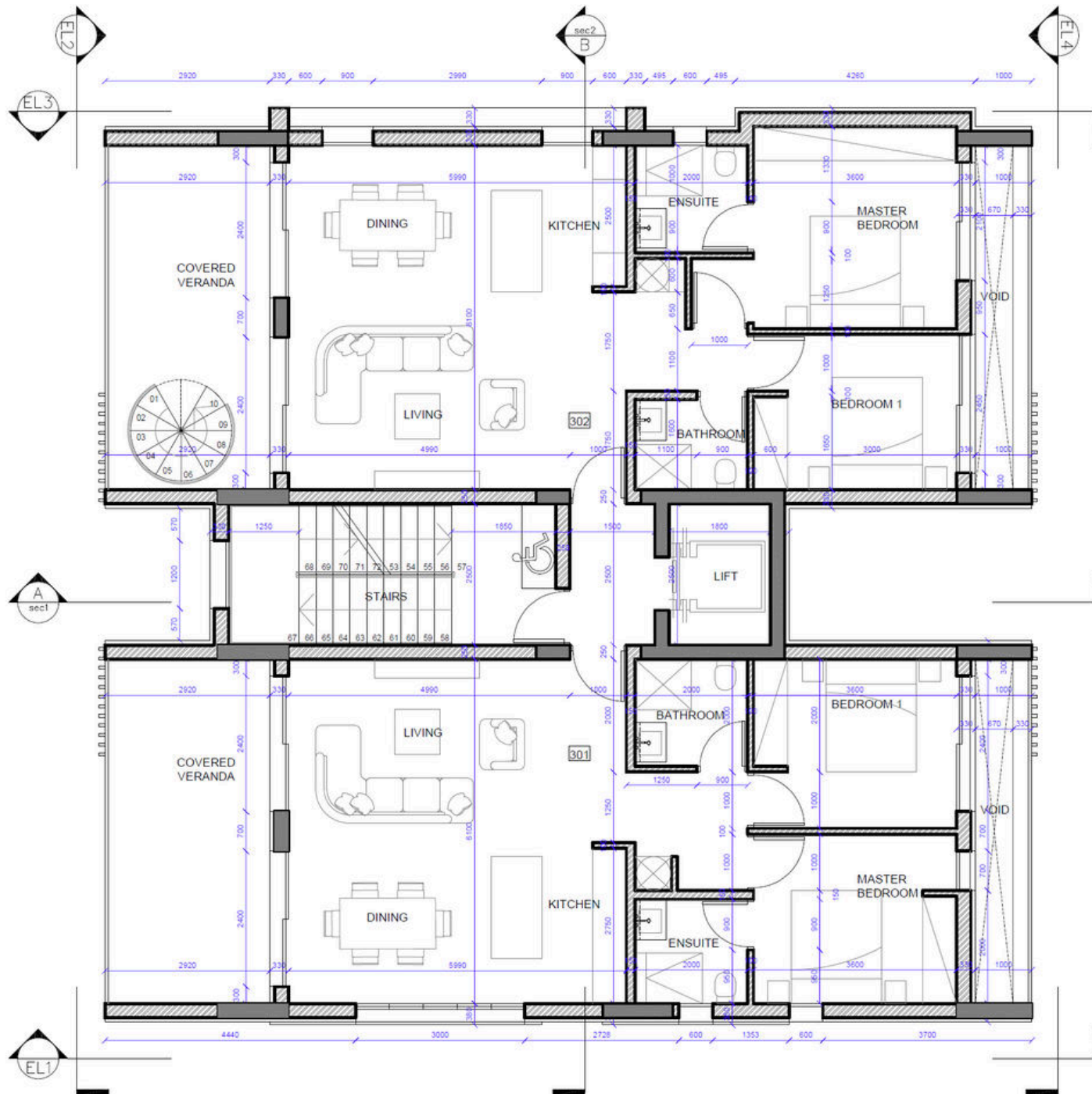
ARCHITECTURAL PLANS



GROUND FLOOR



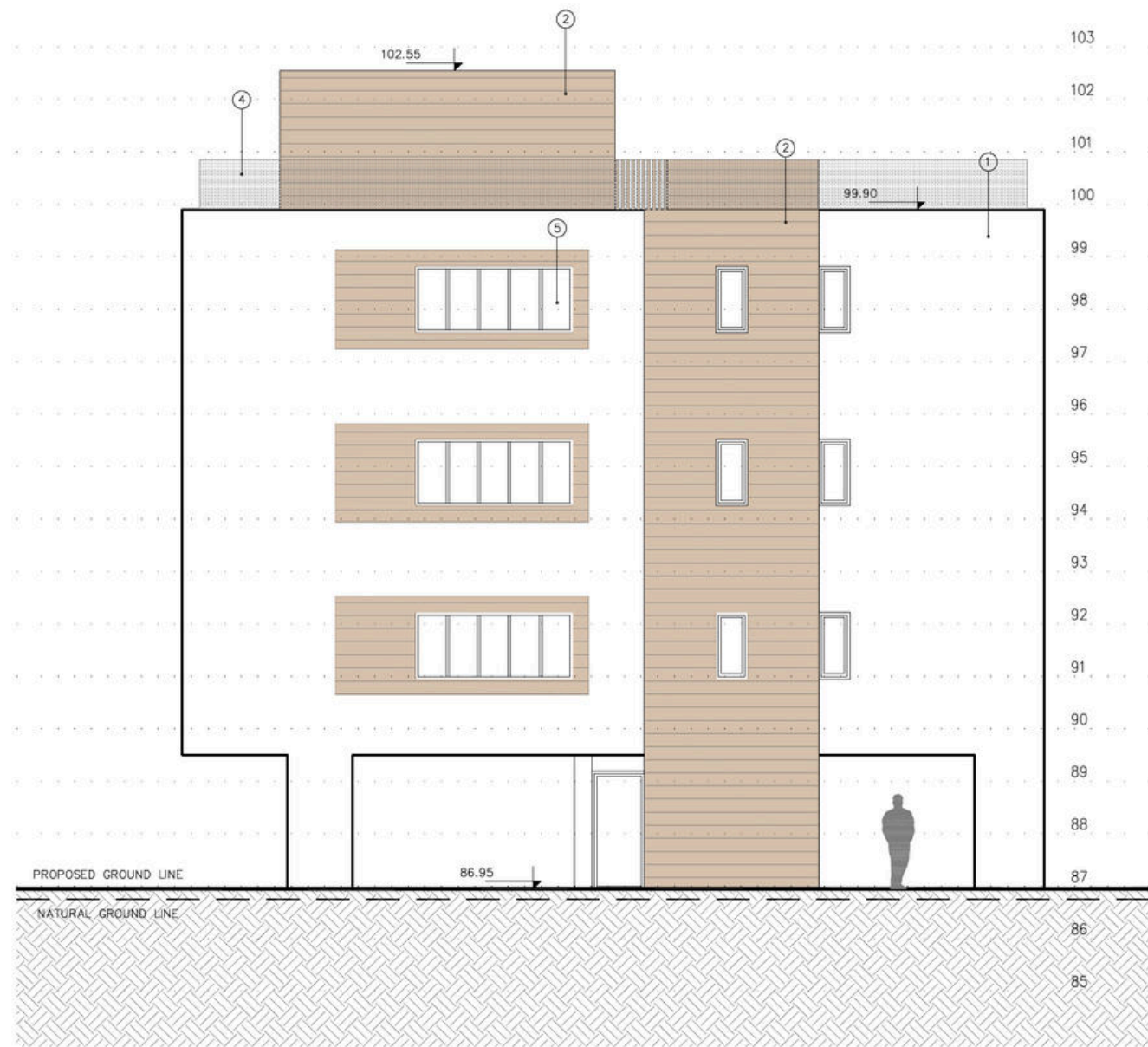
FIRST FLOOR



THIRD FLOOR



ROOF PLAN



ELEVATION 1





ELEVATION 3



ELEVATION 4

A R E A S

FLAT NUMBER	INDOOR AREA	COVERED VERANDAS	NUMBER OF BEDROOMS	ROOF GARDEN	PRICES (NOT INCLUDING VAT)
101	80 SQ.M.	19 SQ.M.	2	-	SOLD
102	81 SQ.M.	19 SQ.M.	2	-	€260.000
201	80 SQ.M.	19 SQ.M.	2	-	SOLD
202	81 SQ.M.	19 SQ.M.	2	50 SQ.M.	€270.000
301	80 SQ.M.	19 SQ.M.	2	-	SOLD
302	81 SQ.M.	19 SQ.M.	2	50 SQ.M.	€285.000

REN D E R S



SIDE VIEW



FRONT VIEW



SIDE VIEW



SIDE VIEW



SIDE VIEW



SIDE VIEW



SIDE VIEW



SIDE VIEW



ROOF GARDEN



SPECIFICATIONS FOR APARTMENTS

CONSTRUCTION

Reinforced concrete frame of high specifications based on Eurocodes, including EC8 regarding anti-seismic regulations and the Cyprus Standard.

ENERGY EFFICIENCY A

EXTERNAL AND INTERNAL WALLS

- External walls: Clay bricks
- Interior walls: Clay bricks
- Thermal insulation and waterproofing of the roof of high standards
- Thermal insulation of external walls based on Energy Performance Certificate
- Interior and exterior wall plastering
- Interior walls painted white
- Exterior walls painted or coated based on architectural plans

LINNING OF INTERNAL WALLS

- Bathroom walls lined with European-standard ceramics up to the height of the ceiling
- Kitchen walls from counter-top level to high cabinets covered with techno-granite

FLOORS

- Ceramic floors of high European standards allowance €20.00/sq.m.

DOORS AND WINDOWS

- Security and fireproof door at the main entrance of the project
- Interior doors 2.20 meters high in white color

- High specification aluminum series MU114 or corresponding series in the color of the architect's choice with class glass $V_y=1.4W/(m^2, k)$

WOODWORKING

- Cupboard and drawer doors for wardrobes, kitchen and bathroom furniture in high quality melamine or mdf in white color.
- Door handles worth €10/piece
- Cabinet handles worth €5/piece

KITCHEN

- Techno-granite counters worth €150/meter
- Stainless steel sink worth €100
- Household appliances, provisions for stove, oven, microwave, kitchen hood, washing machine, dishwasher and refrigerator.
- Sink mixer (hot, cold and drinking water) worth €50

SEWERS

- Connection to central area drainage system

WATER SUPPLY AND RAINWATER

- Piping system based on local regulations
- Rainwater management system for the roof and for all covered and uncovered terraces
- Plastic piping system for hot and cold-water supply, drains and drainage system. Central pressure system
- Cold water from a central water supply system with an independent automated consumption meter, combined with a storage tank.
- Hot water from a dual energy solar heater mounted on the roof

INDOOR CLIMATE MANAGEMENT

- Provisions for wall mounted air-condition units in all bedrooms

HYGIENE ITEMS

- Washbasins of European specifications worth €100/piece
- Wall-hung toilets with flush cistern €100/piece
- European standard shower mixer worth €70/piece
- Shaver socket in all sanitary areas
- European standard washbasin mixer worth €50/piece
- Fixed single shower glass worth €150/piece
- Bathroom accessories
- Bathtub of European specifications as shown in the architectural plans €100/piece

ELECTRICAL INSTALLATIONS

Electrical installation according to EAC specifications.

- Lighting system in all rooms and terraces
- Sockets in all rooms
- Outdoor sockets on the terraces
- Telephone and internet points in all main rooms
- Intercom system

EXTERIOR SPACES

- Configuration based on architectural plans

PUBLIC SPACES

- Elevator access to all floors
- Security doors to enter the lobby
- Electric vehicle charging point