

Belcrest Heights

by

winstonfield



Belcrest Heights

INSPIRED BY NATURE

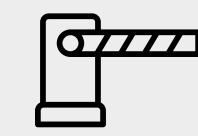
Located in a calm, well-positioned area surrounded by mountains and greenery Belcrest Heights is a refined residential development set in the prestigious area of Ayios Tychonas, Limassol, where elevated living meets contemporary design. Thoughtfully positioned to capture sweeping views and natural light, the project offers a harmonious blend of elegance, comfort, and modern architecture. Each residence is crafted with attention to detail, combining high-quality materials with functional layouts that cater to today's lifestyle.

Surrounded by a serene environment yet just minutes from the vibrant city center and coastline, Belcrest Heights provides the perfect balance between tranquility and accessibility. This development is designed for those who value privacy, sophistication, and a seamless connection between indoor and outdoor living, making it an exceptional choice for both homeowners and investors.





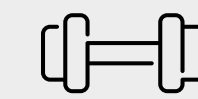
Belcrest Heights



Residential Gated Complex



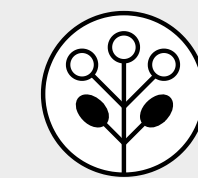
Common Swimming Pool



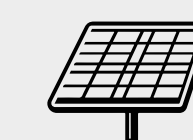
Private Gym



Covered Parking



Communal Gardens



Photovoltaic System

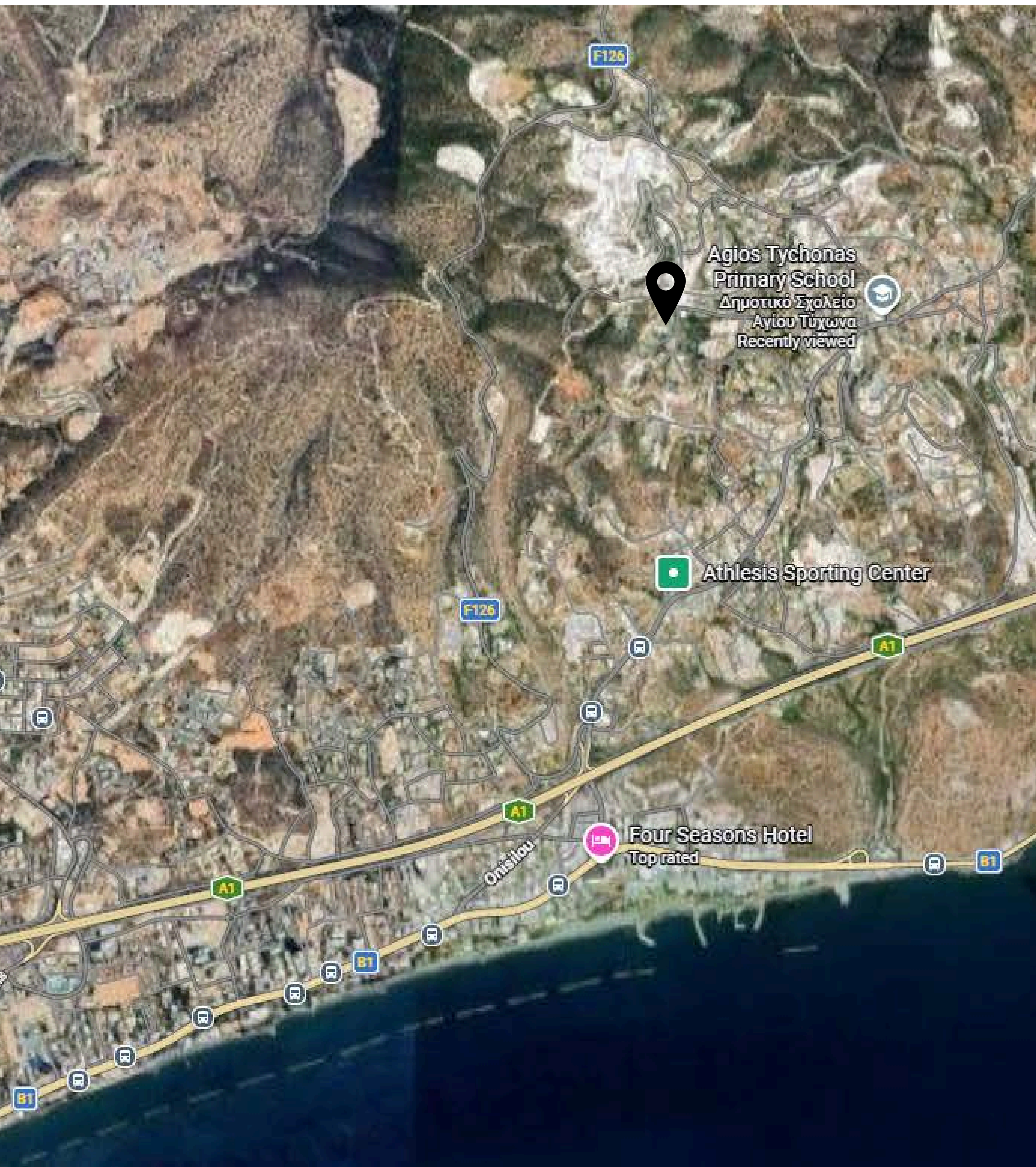
Location: Ayios Tychonas, Limassol





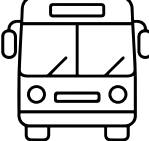
Delivery Date: Q2 2028

Energy Efficiency: A

LOCATION

Ayios Tychonas



-  500 m from Amenities
-  500 m from School
-  2 km from Beach
-  60 km from Airport
-  200 m from Public Transport

An aerial photograph of a small white boat with a canopy, floating on clear, vibrant turquoise water. The water's surface is textured with light reflections, and the overall scene is serene and natural. The text is overlaid in white, sans-serif font.

EMBRACE THE CALM OF
NATURE IN LIMASSOL

BLUE FLAG BEACHES

SPECIFICATIONS

Structural

- Reinforced concrete structure, designed to anti-seismic standards
- External walls: High insulation bricks and thermal insulation
- Roof: insulated concrete slab for improved energy efficiency
- Full compliance with Cyprus energy performance regulations
- Solar photovoltaic system & solar water heating

Mechanical & Plumbing

- Full hot & cold water system with pressure system
- Solar water heating
- Complete drainage system
- Air-conditioning
- Underfloor Heating

Bathrooms

- Contemporary sanitary ware and fittings
- High-quality ceramic wall finishes
- Elegant vanity units with marble or equivalent tops

Finishes (Walls, Floors & Ceilings)

- Internal walls: plastered and finished with emulsion paint
- Bathrooms: high-quality ceramic wall tiles
- Floors: large-format ceramic tiles
- Bedrooms: parquet flooring
- Ceilings: dry wall, plastered and finished with emulsion paint

Carpentry

- Premium internal doors and feature entrance door
- Custom kitchen cabinetry with soft-close systems
- Built-in wardrobes and bathroom vanity units
- High-quality finishes throughout

Aluminium & Glazing

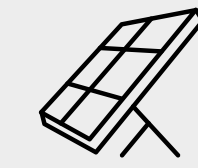
- Thermal aluminium windows and sliding doors
- Double glazing for thermal and acoustic insulation
- Modern black frame finish



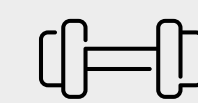
MAIN FEATURES



Air Conditioning System



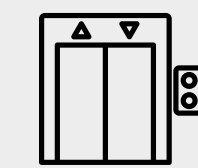
Photovoltaic System for Each Apartment



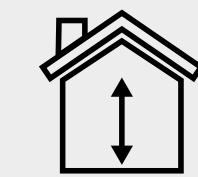
Gym



Swimming Pool



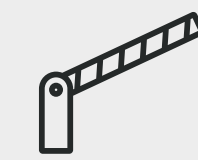
Thermal Aluminium Doors



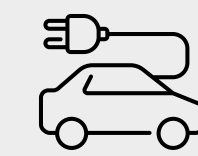
High Ceilings



Smart Entry Video Phone



Automated Gate Access for Parking Area



Electric Vehicle Charging Provision for Each Apartment



winstonfield



winstonfield



winstonfield



winstonfield



winstonfield





winstonfield



winstonfield



winstonfield



winstonfield

CRAFTED FOR ELEGANCE

Belcrest Heights interiors are designed with harmony, sophistication, and comfort in mind. Blending natural textures, clean lines, and elegant finishes, each space creates a warm and inviting atmosphere. Rich woods, smooth stone, and soft textiles add timeless character, while thoughtfully planned layouts support modern living. Every residence is carefully curated to balance style, functionality, and everyday comfort—reflecting refined contemporary living at its finest.

- Modern aesthetic functional spaces
- Design enhances everyday living
- Natural materials used elegantly
- Warm tones with refined contrasts

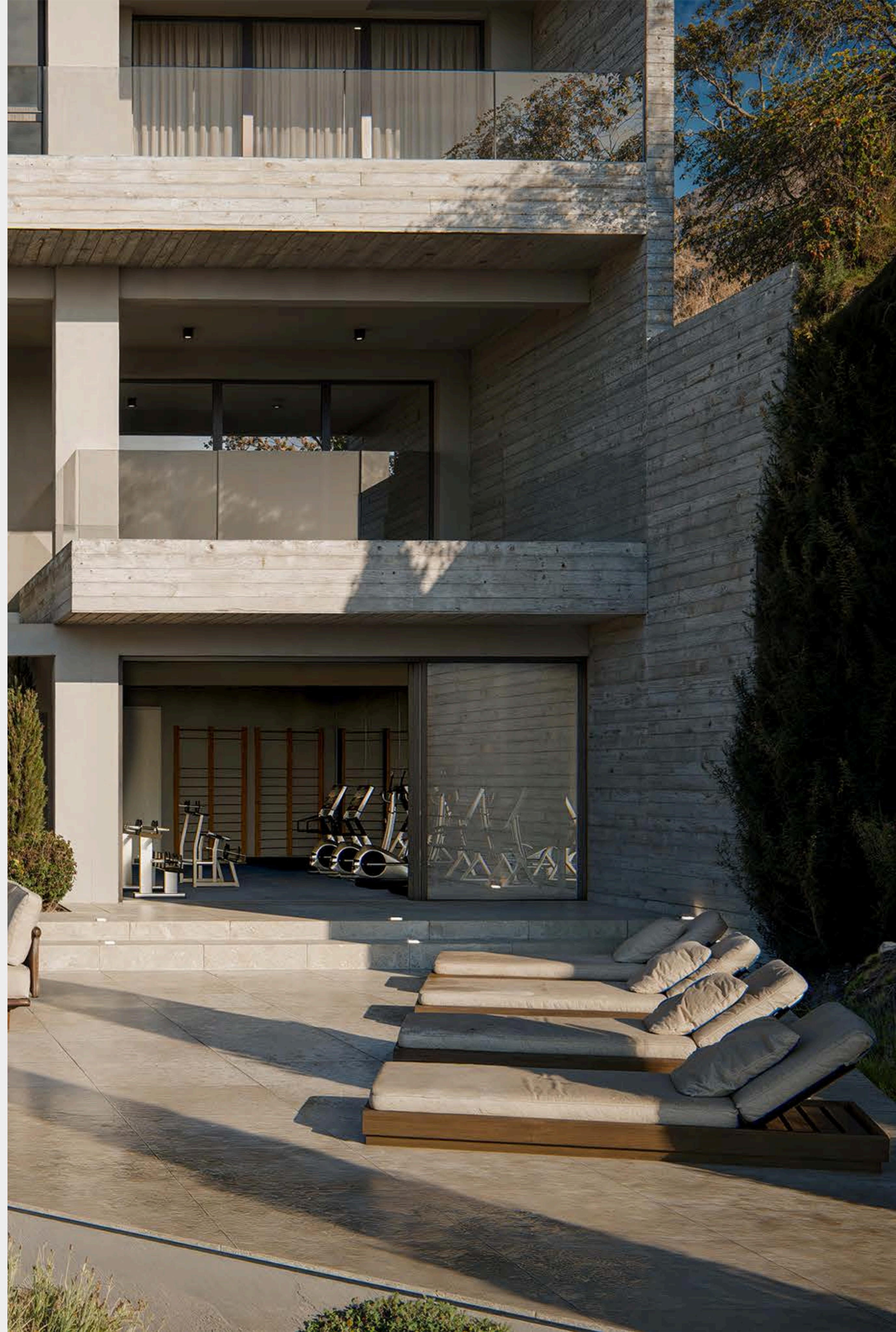


BELCREST HEIGHTS



DESIGN

We believe that every space tells a story. Our designs blend creativity, functionality, and elegance to bring your vision to life. With a keen eye for detail and a passion for innovation, we strive to create environments that not only meet your needs but also inspire and uplift.



ELEGANCE & HARMONY

LIVING IN BALANCE

The design is born from clean geometry, deep tones, and subtle light. Every detail is crafted to highlight stillness and refinement



INTERIORS

A showcase of the project's interiors that combine elegance, comfort and functionality

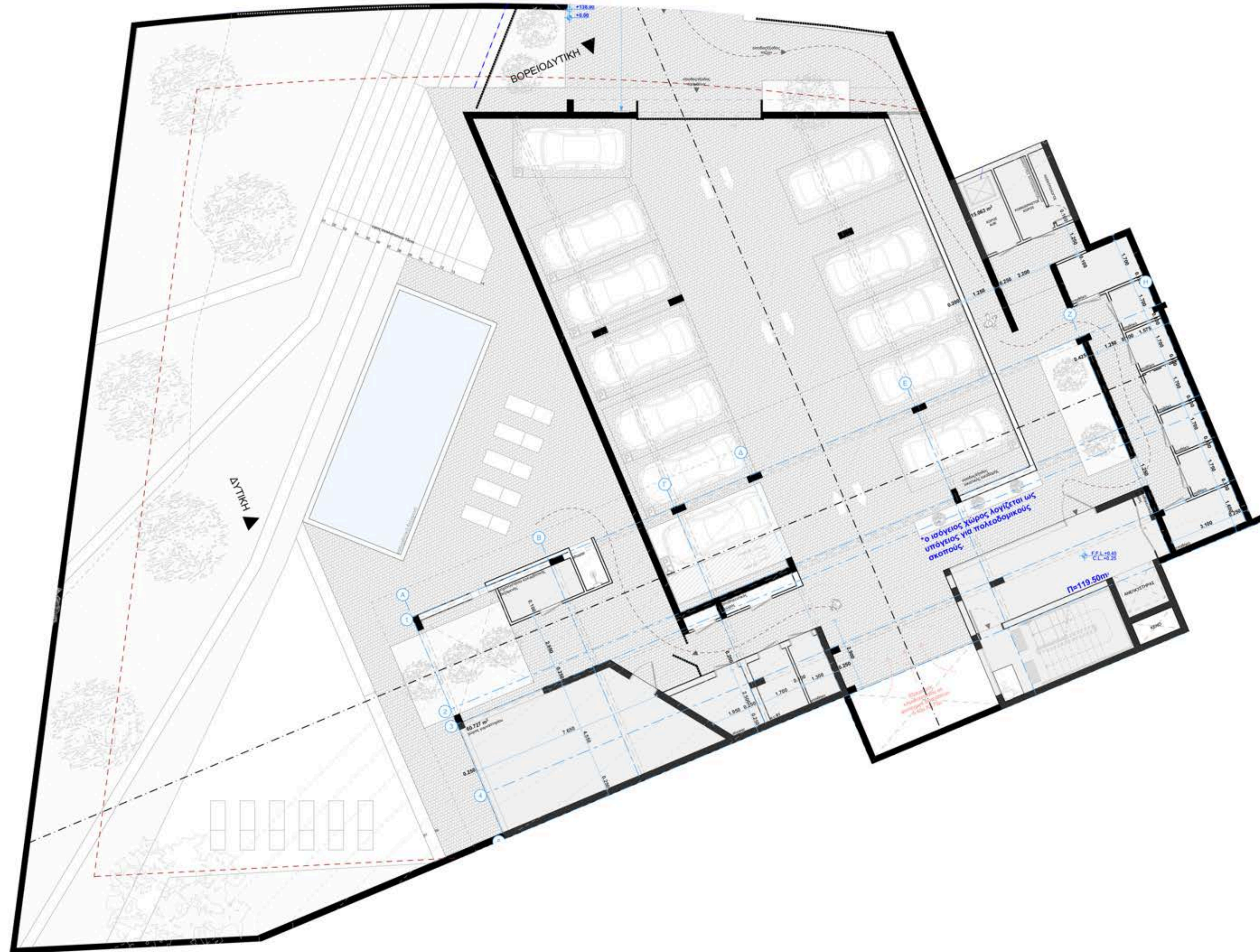


Belcrest Heights

Unit	Bedrooms	Bathrooms	Toilets	Covered Area	Coverd Veranda	Parking	Storage
100	2	2	2	83	26	1	1
101	2	2	2	83	17	1	1
102	2	2	2	83	17	1	1
103	2	2	2	83	20	1	1
200	3	3	3	110	21	2	1
201	2	2	2	83	17	1	1
202	2	2	2	83	17	1	1
203	1	1	1	54	29	1	1

FLOOR PLANS

Ground Floor



FLOOR PLANS

First Floor

APT 100

APT 101

APT 102

APT 103



LUXURY FRAMED BY NATURE



Beyond the interiors, the project unfolds into a lush outdoor sanctuary where beautifully landscaped gardens create a sense of calm and privacy. Expansive green spaces are thoughtfully designed to complement the architecture, offering shaded pathways, tranquil corners, and vibrant plant life throughout. At the heart of it all, a stunning pool area provides a refreshing escape, surrounded by elegant lounging spaces that invite relaxation under the open sky. Together, these elements extend the living experience outdoors, creating a harmonious connection between refined luxury and the natural environment.

Belcrest Heights

CONTACT US

www.winstonfield.com

Phone: 7000 33 03

sales@winstonfield.com

winstonfield